

# 8. かむろ坂物語

作詞 甲斐 新  
作曲 小川寛興  
編曲 日高哲英

**A** ♩=92 ca. **B**

**C**

**D** **E**

**F** **G**

**H** **I**

**J**

**K** *rit.* - - -

*mf espr.*  
*mf*  
*mf*  
*mf*  
*mf*  
*mf*  
*mp*  
*mp*  
*mf*  
*mf*

# 8. かむろ坂物語

作詞 甲斐 新  
作曲 小川寛興  
編曲 日高哲英

**A** ♩=92 ca. **B** **C**

**D** **E** **F**

**G**

**H**

**I**

**J**

**K** *rit.* - - - -

# 8. かむろ坂物語

作詞 甲斐 新  
作曲 小川寛興  
編曲 日高哲英

**A** ♩ = 92 ca. **B**

4 *mf*

16 **C**

*mp* < *mf*

21 **D**

4 7

36 **E**

7 *mp* < *mf*

41 **F**

4 *p*

51 **G**

6

63 **H** **I**

*mf* 2 *mf* 8

77 **J**

*mf*

82 **K** *rit.* - - -

2

# 8. かむろ坂物語

作詞 甲斐 新  
作曲 小川寛興  
編曲 日高哲英

**A** ♩=92 ca. **B** **C**

**D** **E**

**F** **G**

**H** **I**

**J**

**K** *rit.* - - -

# 8. かむろ坂物語

作詞 甲斐 新  
作曲 小川寛興  
編曲 日高哲英

**A** ♩=92 ca.

**B** **C**

**D**

**E**

**F**

**G**

**H** **I**

**J** **K** *rit.* -----

# 8. かむろ坂物語

作詞 甲斐 新  
作曲 小川寛興  
編曲 日高哲英

**A** ♩=92 ca.      **B**      **C**

19

**D**      **E**

25

41

**F**

49

**G**      **H**

56

**I**      **J**      **K**      *rit.* - - - -

69

# 8. かむろ坂物語

作詞 甲斐 新  
作曲 小川寛興  
編曲 日高哲英

**A** ♩=92 ca.

**B**

Musical notation for section A, measures 1-6. Bass clef, 4/4 time. Measure 1 has a 4-measure rest. Measures 2-4 have whole notes with bar lines. Measure 5 has two half notes. Measure 6 has an 8-measure rest. Dynamics: *mf*, crescendo hairpin.

**C**

Musical notation for section C, measures 17-22. Bass clef, 4/4 time. Measures 17-22 have whole notes. Dynamics: *mf*.

**D**

Musical notation for section D, measures 23-31. Bass clef, 4/4 time. Measures 23-25 have quarter notes with slurs. Measure 26 has a 4-measure rest. Measures 27-31 have quarter notes with slurs. Dynamics: *mp*, crescendo hairpin.

Musical notation for section D, measures 32-42. Bass clef, 4/4 time. Measures 32-42 have quarter notes with slurs.

**E**

Musical notation for section E, measures 37-42. Bass clef, 4/4 time. Measures 37-42 have whole notes. Dynamics: *mf*.

**F**

**G**

Musical notation for sections F and G, measures 43-58. Bass clef, 4/4 time. Measures 43-45 have quarter notes with slurs. Measure 46 has a 4-measure rest. Measure 47 has a 7-measure rest. Measure 48 has a quarter rest. Measures 49-58 have quarter notes with slurs. Dynamics: *mf*, crescendo hairpin.

Musical notation for section G, measures 59-64. Bass clef, 4/4 time. Measures 59-64 have quarter notes with slurs. Dynamics: *f*, crescendo hairpin.

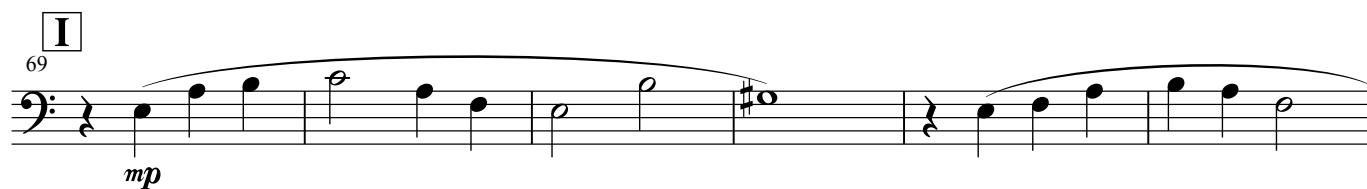
**H**

Musical notation for section H, measures 65-70. Bass clef, 4/4 time. Measures 65-70 have eighth notes with slurs. Dynamics: crescendo hairpin.

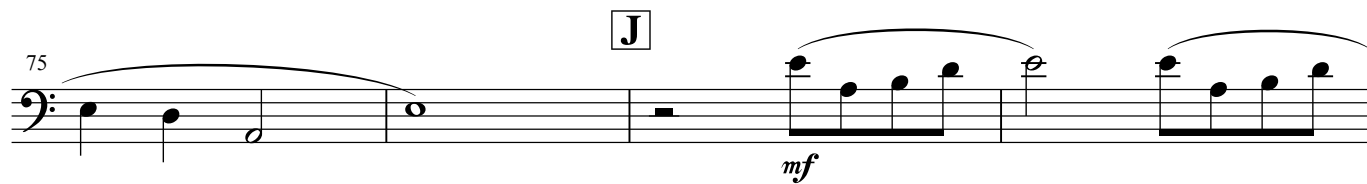
8. かむろ坂物語

1st Bassoon

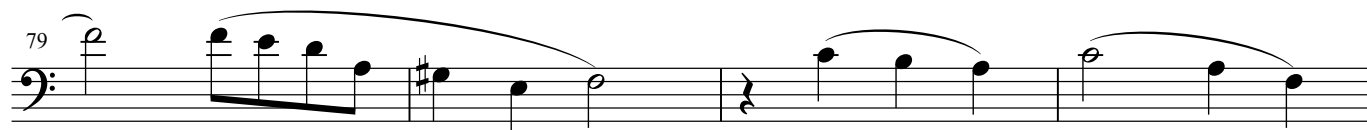
**I**  
69  
*mp*



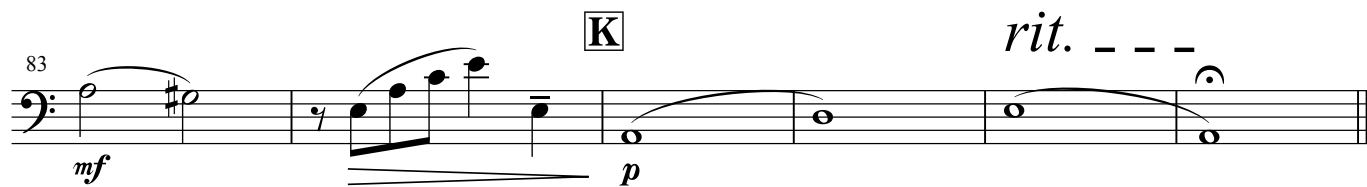
75  
**J**  
*mf*



79  
*p*



83  
**K**  
*mf* *p* *rit. - - -*





# 8. かむろ坂物語

作詞 甲斐 新  
作曲 小川寛興  
編曲 日高哲英

**A** ♩=92 ca. **B** **C**

21 **D**

36 **E**

42 **F** **G**

64 **H**

68 **I**

73

**J** **K** *rit.* - - -

77

# 8. かむろ坂物語

作詞 甲斐 新  
作曲 小川寛興  
編曲 日高哲英

**A** ♩=92 ca.

**B**

**C** **D** **E**

**F** **G**

**H** **I**

**J**

**K** *rit.* - - -

# 8. かむろ坂物語

作詞 甲斐 新  
作曲 小川寛興  
編曲 日高哲英

**A** ♩=92 ca.   **B**   **C**   **D**   **E**

45

*mp*   *mf*

59

*mf*

**H**   **I**

65

*mf*

**J**   **K**   *rit.* - - -

77

*mf*

# 8. かむろ坂物語

作詞 甲斐 新  
作曲 小川寛興  
編曲 日高哲英

**A** ♩=92 ca.   **B**   **C**   **D**   **E**

47

**F**   **G**

*mp*   *mf*

65

**H**   **I**

*mp*   *mf*

77

**J**   **K**   *rit. - - -*

*mf*

# 8. かむろ坂物語

作詞 甲斐 新  
作曲 小川寛興  
編曲 日高哲英

**A** ♩=92 ca.      **B**      **C**      **D**

**E**      **F**      **G**

37      12      8      6

*mf*

**H**      **I**      **J**

65      8      5

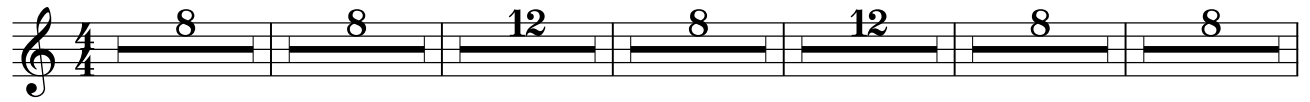
**K**      *rit. ---*

82      2

# 8. かむろ坂物語

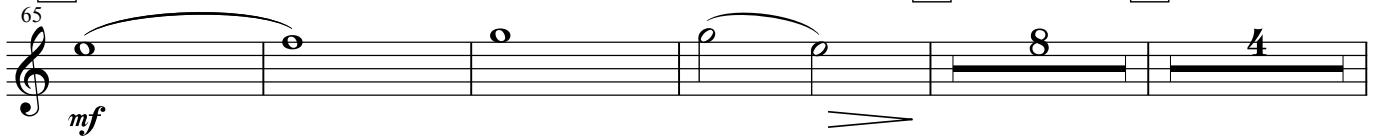
作詞 甲斐 新  
作曲 小川寛興  
編曲 日高哲英

**A** ♩=92 ca. **B** **C** **D** **E** **F** **G**

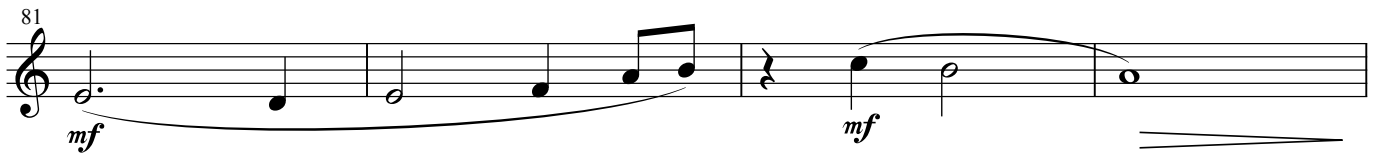


**H** **I** **J**

65 *mf*

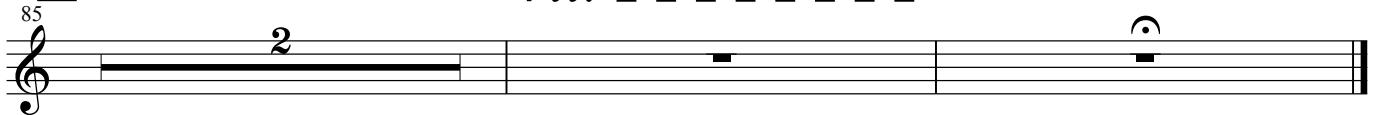


81 *mf* *mf*



**K** *rit.* -----

85 2



# 8. かむろ坂物語

作詞 甲斐 新  
作曲 小川寛興  
編曲 日高哲英

**A** ♩=92 ca. **B** **C** **D** **E** **F** **G**

**H** **I** **J**

*mf*

**K** *rit.* - - - -

83 *mf*

# 8. かむろ坂物語

作詞 甲斐 新  
作曲 小川寛興  
編曲 日高哲英

**A** ♩=92 ca. **B** **C** **D** **E** **F** **G**

65 **H** **I** **J**

*mf*

**K** *rit.* - - - -

83 *mf*



# 8. かむろ坂物語

作詞 甲斐 新  
作曲 小川寛興  
編曲 日高哲英

**A** ♩=92 ca. **B** **C** **D** **E** **F** **G**

**H** 65 **I** **J**

*mf* *>*

**K** 83 *rit.* - - - -

*mf* *>*

# 8. かむろ坂物語

作詞 甲斐 新  
作曲 小川寛興  
編曲 日高哲英

**A** ♩=92 ca. **B** **C** **D** **E** **F** **G**

**H** 65 **I** **J**

*mf*

**K** 82 *rit. - - -*

# 8. かむろ坂物語

作詞 甲斐 新  
作曲 小川寛興  
編曲 日高哲英

**A** ♩=92 ca. **B** **C** **D** **E** **F** **G**

64 **H** **I**

77 **J** **K** *rit.* - - -

Timpani

# 8. かむろ坂物語

作詞 甲斐 新  
作曲 小川寛興  
編曲 日高哲英

**A** ♩=92 ca.   **B**   **C**   **D**   **E**

**F**   **G**   **H**

49

**I**   **J**

67

**K**   *rit.* - - - -

83

# 8. かむろ坂物語

作詞 甲斐 新  
作曲 小川寛興  
編曲 日高哲英

**A** ♩=92 ca.   **B**   **C**   **D**   **E**

4/4 8 8 12 8 6

43 <Suspended-Cymbal>  
soft mallets

**F**   **G**

*p* 4 8 7

64 soft mallets

**H**   **I**   **J**

*p* < *mf* 3 8 5

82 soft mallets

**K**   *rit.* - - -

*p* *mf* 2

# 8. かむろ坂物語

作詞 甲斐 新  
作曲 小川寛興  
編曲 日高哲英

**A** ♩=92 ca. **B** **C** *<Triangle>*

**D** 29 *<Cabasa>* **E**

40

45 *<Triangle>* **F** *<Cabasa>*

51

**G** 57

63 **H** *<Wind Chime>* **I**

72 *<Claves>* **J**

83 *<Triangle>* **K** *<Wind Chime>* *rit. - - -*

# 8. かむろ坂物語

作詞 甲斐 新  
作曲 小川寛興  
編曲 日高哲英

**A** ♩=92 ca. **B** *<Sleigh Bells>* **C**

**D** 29 **E**

**F** 49 **G** **H**

**I** 69 **J**

83 **K** *rit. - - -*

# 8. かむろ坂物語

作詞 甲斐 新  
作曲 小川寛興  
編曲 日高哲英

**A** ♩=92 ca. **B** **C** <Vibraphone> motor on soft mallets

27 **D** **E**

49 **F**

57 **G** **H**

69 **I**

73

77 **J** **K** *rit.* - - - -



Harp

# 8. かむろ坂物語

作詞 甲斐 新  
作曲 小川寛興  
編曲 日高哲英

**A** ♩=92 ca.

7

**B**

11

15

**C**

19

8. かむろ坂物語

Harp

23

*mp*

27

**D**

*mp*

31

*mp*

35

**E**

*mf*

39

*mf*

43

**F**

*mf*

4 7

4 7

8. かむろ坂物語

Harp

**G**

57

*mf*

60

**H**

64

[All<sup>o</sup>]

*f*

**I**

69

*mp*

73

**J**

77

*f*

8. かむろ坂物語

Harp

Musical score for Harp, measures 81-84. The score is written for a harp on a grand staff. Measures 81 and 82 feature a melodic line in the right hand with a slur over the notes, and a bass line with rests. Measures 83 and 84 show a change in texture with chords and single notes in both hands.

Musical score for Harp, measures 85-88. Measure 85 is marked with a key signature change symbol (K) and a dynamic marking of *mp*. Measures 86 and 87 feature a melodic line in the right hand with a slur and a *rit.* (ritardando) marking above the staff. Measure 88 concludes the phrase with a final chord in both hands.

Piano

# 8. かむろ坂物語

作詞 甲斐 新  
作曲 小川寛興  
編曲 日高哲英

**A** ♩ = 92 ca.

**B** **C**

9

21

**D** **E**

29

40

8. かむろ坂物語

Piano

45 F

mp

57 G H

f

68 I J K rit. - - -

f

# 8. かむろ坂物語

作詞 甲斐 新  
作曲 小川寛興  
編曲 日高哲英

**A** ♩=92 ca. **B**

**C**

21

**D** **E**

41

**F**

53

**G**

8. かむろ坂物語

Violin I

63 **H**

*f*

69 **I** **J**

*p* *mf*

80

*p*

85 **K** *rit.* - - - -

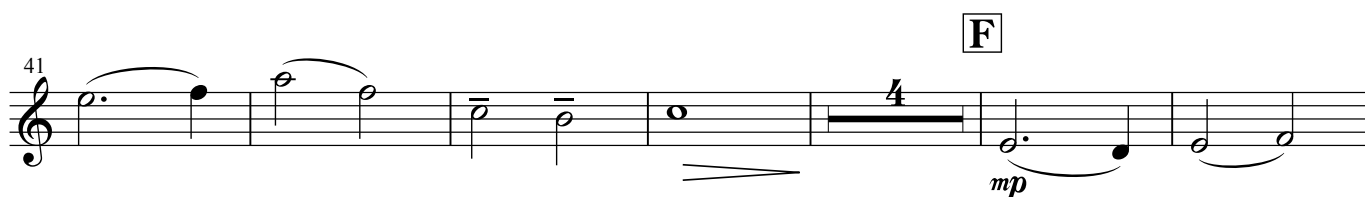
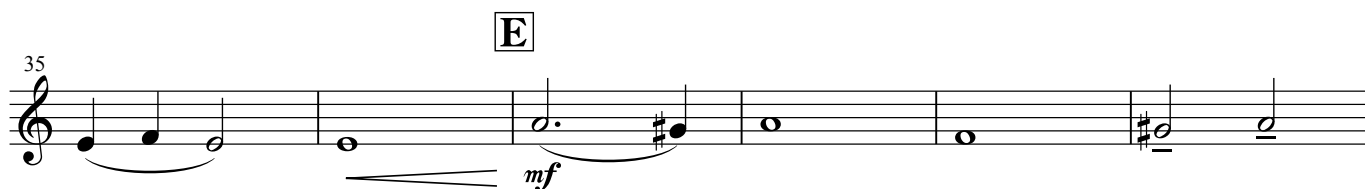
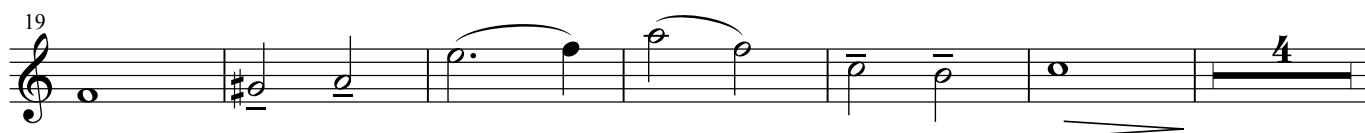
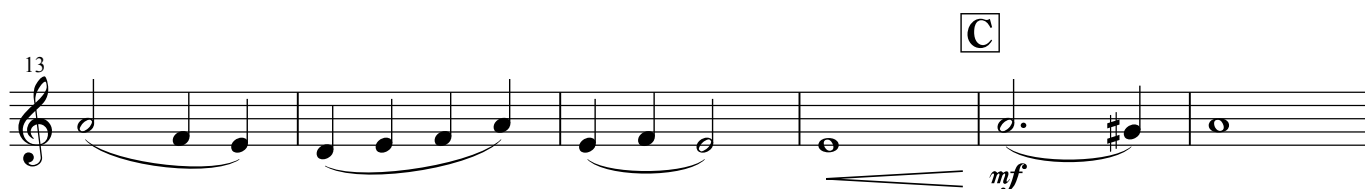
*p*



## 8. かむろ坂物語

作詞 甲斐 新  
作曲 小川寛興  
編曲 日高哲英

**A** ♩=92 ca. **B**



8. かむろ坂物語

Violin II

64 **H** **I**

*f* *>*

76 **J**

*p* *mf*

83 **K** *rit.* - - - -

*p* *rit.* - - - -

# 8. かむろ坂物語

作詞 甲斐 新  
作曲 小川寛興  
編曲 日高哲英

**A** ♩=92 ca.

Musical notation for section A, measures 1-8. It starts with a 4-measure rest, then a series of eighth notes with slurs. Dynamics include *mf* and a crescendo hairpin.

**B**

Musical notation for section B, measures 9-12. It features a half note followed by eighth notes with slurs. Dynamics include *p*.

Musical notation for section B, measures 13-16. It continues with eighth notes and slurs, ending with a decrescendo hairpin.

**C**

Musical notation for section C, measures 17-20. It features eighth notes with slurs and some beamed eighth notes. Dynamics include *mf*.

Musical notation for section C, measures 21-24. It continues with eighth notes and slurs, ending with a decrescendo hairpin.

**D**

Musical notation for section D, measures 25-30. It features half notes and eighth notes with slurs. Dynamics include *p* and *mp*.

Musical notation for section D, measures 31-36. It continues with half notes and eighth notes with slurs, ending with a decrescendo hairpin.

**E**

Musical notation for section E, measures 37-40. It features eighth notes with slurs and some beamed eighth notes. Dynamics include *mf*.

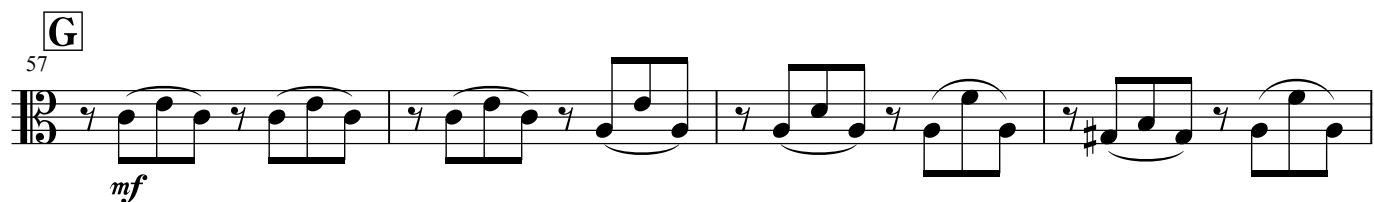
8. かむろ坂物語

Viola

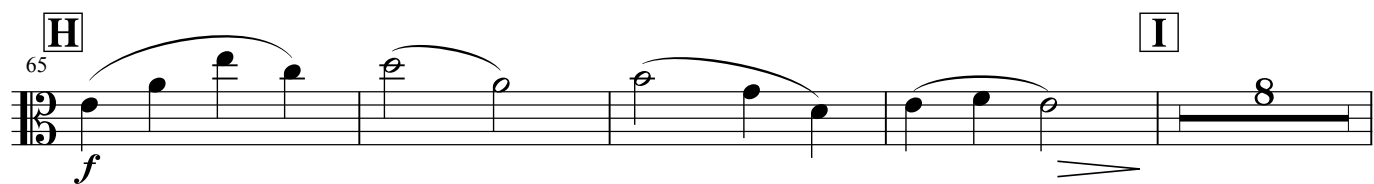
41 

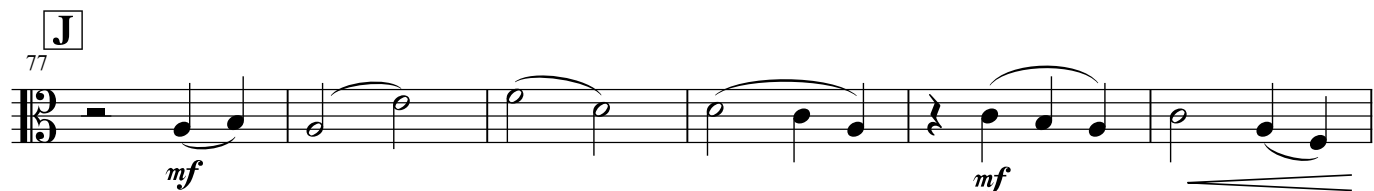
**F**  
49   
*mp*

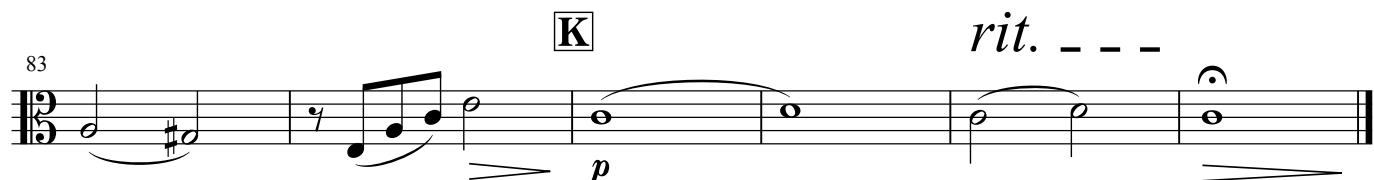
53 

**G**  
57   
*mf*

61 

**H** **I**  
65   
*f*

**J**  
77   
*mf* *mf*

**K** *rit. - - -*  
83   
*p*

# 8. かむろ坂物語

作詞 甲斐 新  
作曲 小川寛興  
編曲 日高哲英

**A** ♩=92 ca.

4  
*mf*

**B**

9  
*p*

**C**

15  
div.  
*mf*

21  
unis.  
*p*

**D**

27  
*p*

**E**

33  
div.  
*mf*

39  
unis.  
*p*

**F**

45 pizz.  
arco  
*mp*

8. かむろ坂物語

Violoncello

51

**G**  
57

*mf*

61

**H**  
65

**I** **J**  
69

*mf*

**K**  
82

*mf* *p* *p* *rit.* - - -

# 8. かむろ坂物語

作詞 甲斐 新  
作曲 小川寛興  
編曲 日高哲英

**A** ♩=92 ca. **B** pizz.

Musical notation for section A and B. Section A is an 8-measure rest. Section B starts with a pizzicato note followed by a 3-measure rest. The dynamic is *p*.

**C**

Musical notation for section C, starting at measure 17. It features a 3-measure rest followed by eighth notes. The dynamic is *mf*.

**D**

Musical notation for section D, starting at measure 25. It features a 3-measure rest followed by eighth notes. The dynamic is *mp*.

**E**

Musical notation for section E, starting at measure 33. It features eighth notes. The dynamic is *mf*.

40

Musical notation for section E continuation, starting at measure 40. It features eighth notes and a 3-measure rest.

**F**

Musical notation for section F, starting at measure 48. It features eighth notes. The dynamic is *p*.

**G**

Musical notation for section G, starting at measure 53. It features eighth notes. The dynamic is *mf*.

59

Musical notation for section G continuation, starting at measure 59. It features eighth notes.

**H**

**I**

**J**

Musical notation for sections H, I, and J, starting at measure 64. Section H is *arco*, followed by a 3-measure rest, then a note, and finally an 8-measure rest and a 5-measure rest. The dynamic is *f*.

82

**K**

*rit.* - - -

Musical notation for section K, starting at measure 82. It features a pizzicato note followed by eighth notes. The dynamic is *mf* transitioning to *p*.