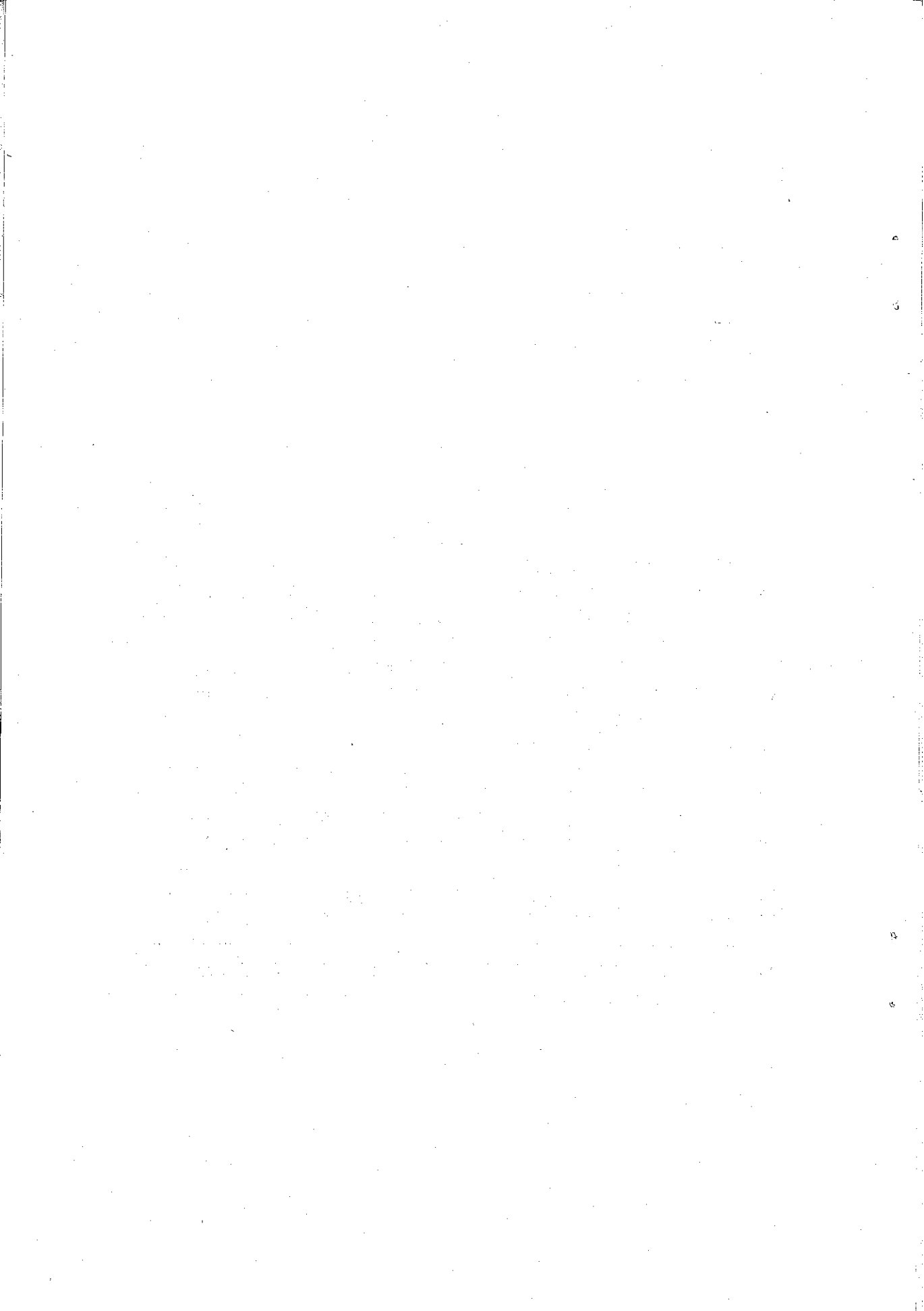


1. 人 口

— 目 次 —

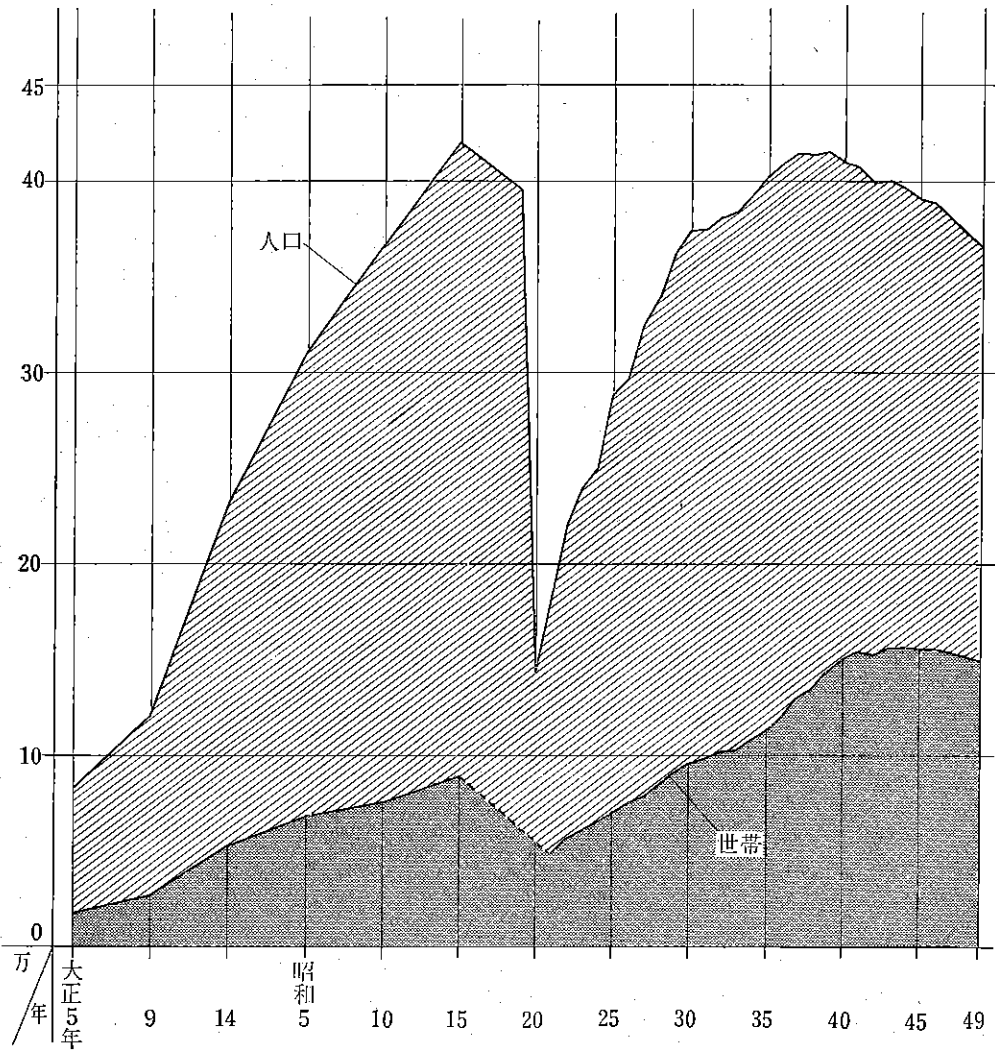
| | | |
|----|--|----|
| 1 | 世帯と人口の推移状況（明26年～昭49年） | 9 |
| 2 | 住民基本台帳による町丁別世帯数，人口および人口密度（昭49年1月1日） | 11 |
| 3 | 住民基本台帳による出張所別世帯と人口の推移（昭40年～昭49年） | 16 |
| 4 | 住民基本台帳による年令別，男女別人口（昭49年1月1日） | 18 |
| 5 | 住民基本台帳による町丁別，年令別および男女別人口（昭49年1月1日） | 20 |
| 6 | 住民基本台帳による年令階層別人口の推移状況（昭45年～昭49年） | 38 |
| 7 | 戸籍諸届出件数（昭39年～昭48年） | 39 |
| 8 | 人口移動（昭46年～昭48年） | 40 |
| 9 | 各都道府県より品川区へ転入した従前地別人口（昭48年） | 42 |
| 10 | 外国人登録国籍別人口（昭44年～昭48年） | 43 |
| 11 | 住民基本台帳による年令別，男女別将来人口の推計（昭49年～昭54年） | 44 |
| 12 | 住民基本台帳による地域別世帯数，人口（男女別，年令3区分別）および人口密度（東京都）（昭49年1月1日） | 52 |
| 13 | 地域別世帯と人口の推計（東京都）（昭49年1月1日） | 53 |
| 14 | 昭和45年国勢調査による地域別常住人口および昼間人口（23区）（昭45年10月1日） | 54 |
| 15 | 昭和45年国勢調査による地域相互間の流入人口および流出人口（15歳以上）（昭45年10月1日） | 56 |



1 世帯と人口の推移状況

| 年次 | 世帯数 | 人 口 | | | 人口の対前年増・減比 | | 説 明 |
|-------|---------|---------|---------|---------|------------|--------|---------------|
| | | 総 数 | 男 | 女 | 実 数 | 率 | |
| 明治26年 | 5,848 | 27,495 | ... | ... | — | % | 東 京 市 人 口 表 |
| 44 | 12,444 | 55,794 | ... | ... | 28,299 | 102.9 | // |
| 大正5年 | 18,258 | 83,592 | ... | ... | 27,798 | 49.8 | // |
| 9 | 27,203 | 121,077 | 62,375 | 58,702 | 37,485 | 44.8 | 国勢調査(10月1日) |
| 14 | 53,661 | 232,447 | 121,744 | 110,703 | 111,370 | 92.0 | // // |
| 昭和5年 | 68,107 | 311,604 | 161,848 | 149,756 | 79,157 | 34.1 | // // |
| 10 | 76,473 | 366,125 | 188,818 | 177,307 | 54,521 | 17.5 | // // |
| 15 | 89,346 | 419,403 | 218,064 | 201,339 | 53,278 | 14.6 | // // |
| 19 | ... | 395,770 | 192,063 | 203,707 | △ 23,633 | △ 5.6 | 人口調査(2月22日) |
| 20 | ... | 143,490 | 75,954 | 67,536 | △ 252,280 | △ 63.7 | // (11月1日) |
| 21 | 48,248 | 181,602 | 93,628 | 87,974 | 38,112 | 26.6 | // (4月26日) |
| 22 | 56,700 | 219,500 | 112,296 | 107,204 | 37,898 | 20.9 | 臨時国勢調査(10月1日) |
| 23 | 60,510 | 240,182 | 122,471 | 117,711 | 20,682 | 9.4 | 常住人口調査(8月1日) |
| 24 | 65,745 | 249,184 | 127,945 | 121,239 | 9,002 | 3.7 | 配給台帳(1月1日) |
| 25 | 69,735 | 288,545 | 145,523 | 143,022 | 39,361 | 15.8 | 国勢調査(10月1日) |
| 26 | 75,690 | 297,835 | 151,656 | 146,179 | 9,290 | 3.2 | 配給台帳(1月1日) |
| 27 | 78,160 | 324,951 | 164,271 | 160,680 | 27,116 | 9.1 | 住民登録(7月1日) |
| 28 | 83,997 | 339,558 | 172,578 | 166,980 | 14,607 | 4.5 | // (1月1日) |
| 29 | 91,510 | 362,410 | 185,356 | 177,054 | 22,852 | 6.7 | // // |
| 30 | 96,419 | 374,184 | 191,614 | 182,570 | 11,774 | 3.2 | // // |
| 31 | 97,799 | 374,498 | 192,016 | 182,482 | 314 | 0.1 | // // |
| 32 | 100,959 | 381,209 | 196,237 | 184,972 | 6,711 | 1.8 | // // |
| 33 | 102,388 | 384,445 | 198,867 | 185,578 | 3,236 | 0.8 | // // |
| 34 | 108,112 | 393,546 | 203,588 | 189,958 | 9,101 | 2.3 | // // |
| 35 | 113,258 | 402,583 | 209,161 | 193,422 | 9,037 | 2.3 | // // |
| 36 | 120,455 | 409,003 | 212,889 | 196,114 | 6,420 | 1.6 | // // |
| 37 | 130,559 | 414,520 | 216,133 | 198,387 | 5,517 | 1.3 | // // |
| 38 | 135,824 | 412,012 | 214,025 | 197,987 | △ 2,508 | △ 0.6 | // // |
| 39 | 144,535 | 415,728 | 215,662 | 200,066 | 3,716 | 0.9 | // // |
| 40 | 151,359 | 410,637 | 212,248 | 198,389 | △ 5,091 | △ 1.2 | // // |
| 41 | 154,719 | 407,230 | 209,839 | 197,391 | △ 3,407 | △ 0.8 | // // |
| 42 | 153,361 | 398,079 | 203,147 | 194,932 | △ 9,151 | △ 2.2 | // // |
| 43 | 156,293 | 399,974 | 203,887 | 196,087 | 1,895 | 0.5 | // // |
| 44 | 156,431 | 396,558 | 202,256 | 194,302 | △ 3,416 | △ 0.9 | 住民基本台帳(1月1日) |
| 45 | 156,278 | 391,703 | 198,903 | 192,800 | △ 4,855 | △ 1.2 | // // |
| 46 | 156,054 | 388,122 | 196,734 | 191,388 | △ 3,581 | △ 0.9 | // // |
| 47 | 154,450 | 381,143 | 191,984 | 189,159 | △ 6,979 | △ 1.8 | // // |
| 48 | 152,542 | 374,534 | 188,172 | 186,362 | △ 6,609 | △ 1.7 | // // |
| 49 | 150,356 | 366,061 | 183,545 | 182,516 | △ 8,473 | △ 2.3 | // // |

世帯と人口の推移



2 住民基本台帳による町丁別世帯数、人口および人口密度

(昭和49年1月1日)

| 町 | 丁 | 世帯数 | 人 | | | 対前年増・減比 | | 人口密度 (1km ² につき) | 1世帯 あたり 人口 |
|------|-----------------|---------|---------|---------|---------|---------|---------|-----------------------------------|------------------|
| | | | 総数 | 男 | 女 | 世帯数 | 人口 | | |
| 総 | 数 | 150,356 | 366,061 | 183,545 | 182,516 | △ 2,186 | △ 8,473 | 22,541 | 2.4 |
| 品川地区 | | 25,262 | 62,133 | 31,928 | 30,205 | △ 235 | △ 1,098 | 16,702 | 2.5 |
| | 北品川1丁目 | 1,920 | 4,789 | 2,363 | 2,426 | △ 101 | △ 144 | 34,207 | 2.5 |
| | 2 | 1,637 | 4,488 | 2,216 | 2,272 | △ 70 | △ 164 | 34,523 | 2.7 |
| | 3 | 1,020 | 2,663 | 1,350 | 1,313 | 25 | 3 | 16,644 | 2.6 |
| | 4 | 329 | 732 | 369 | 363 | △ 1 | △ 17 | 4,306 | 2.2 |
| | 5 | 936 | 2,125 | 1,114 | 1,011 | △ 13 | △ 45 | 11,184 | 2.3 |
| | 6 | 296 | 706 | 349 | 357 | 4 | △ 180 | 8,825 | 2.4 |
| | 東品川1丁目 | 1,832 | 4,481 | 2,329 | 2,152 | 11 | △ 31 | 24,894 | 2.4 |
| | 2 | 453 | 1,214 | 630 | 584 | 32 | 148 | 6,070 | 2.7 |
| | 3 | 1,070 | 2,507 | 1,353 | 1,154 | 74 | 230 | 8,087 | 2.3 |
| | 4 | 262 | 377 | 243 | 134 | △ 39 | △ 59 | 1,795 | 1.4 |
| | 5 | 8 | 15 | 11 | 4 | △ 9 | △ 11 | 38 | 1.9 |
| | 東品川5丁目地先 埋立地 | 87 | 158 | 107 | 51 | 13 | 37 | ... | 1.8 |
| | 南品川1丁目 | 675 | 1,791 | 928 | 863 | △ 26 | △ 79 | 19,900 | 2.7 |
| | 2 | 1,320 | 3,016 | 1,573 | 1,443 | 47 | △ 61 | 27,418 | 2.3 |
| | 3 | 671 | 1,689 | 841 | 848 | 15 | 4 | 21,113 | 2.5 |
| | 4 | 2,026 | 4,721 | 2,518 | 2,203 | 199 | 164 | 29,506 | 2.3 |
| | 5 | 2,248 | 5,696 | 2,903 | 2,793 | △ 107 | △ 213 | 33,506 | 2.5 |
| | 6 | 1,665 | 3,411 | 1,566 | 1,845 | △ 59 | △ 94 | 31,009 | 2.0 |
| | 西品川1丁目 | 2,591 | 5,808 | 3,100 | 2,708 | △ 40 | △ 183 | 32,267 | 2.2 |
| | 2 | 1,856 | 4,826 | 2,489 | 2,337 | △ 130 | △ 249 | 40,217 | 2.6 |
| | 3 | 1,547 | 3,837 | 2,002 | 1,835 | △ 20 | △ 81 | 31,975 | 2.5 |
| | 広町1丁目 | 74 | 149 | 100 | 49 | △ 16 | △ 22 | 1,064 | 2.0 |
| | 2 | 739 | 2,934 | 1,474 | 1,460 | △ 24 | △ 51 | 10,479 | 4.0 |
| 大崎地区 | | 20,527 | 46,378 | 22,749 | 23,629 | △ 348 | △ 1,240 | 16,103 | 2.3 |
| | 上大崎1丁目 | 1,298 | 3,216 | 1,511 | 1,705 | △ 20 | △ 31 | 20,100 | 2.5 |
| | 2 | 930 | 2,124 | 1,016 | 1,108 | △ 75 | △ 190 | 9,235 | 2.3 |
| | 3 | 1,416 | 3,001 | 1,388 | 1,613 | 96 | 176 | 18,756 | 2.1 |
| | 4 | 820 | 1,571 | 599 | 972 | 28 | 4 | 31,420 | 1.9 |
| | 東五反田1丁目 | 828 | 1,881 | 921 | 960 | △ 49 | △ 120 | 15,675 | 2.3 |
| | 2 | 613 | 1,299 | 684 | 615 | △ 1 | △ 25 | 8,660 | 2.1 |

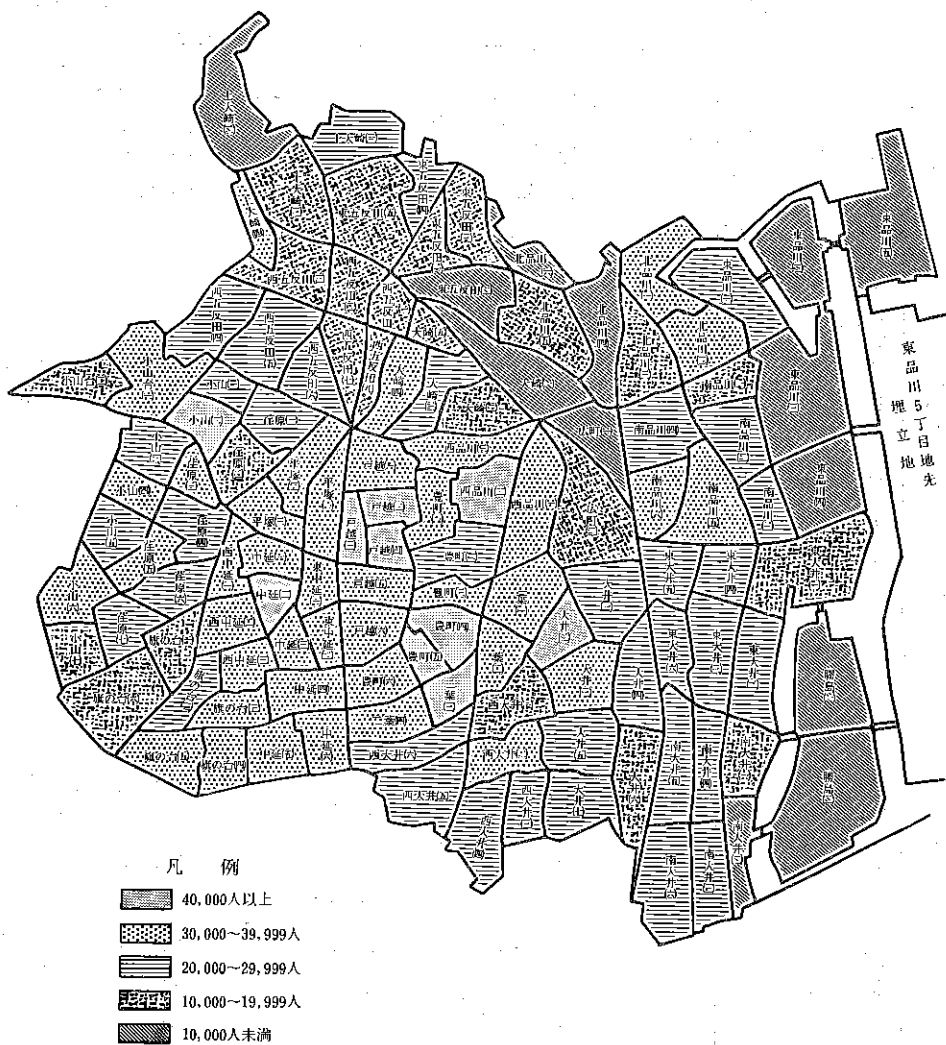
| 町 | 丁 | 世帯数 | 人 口 | | | 対前年増・減比 | | | 人口密度 (1km ² につき) | 1世帯 あたり 人 口 | |
|---------|------|--------|--------|--------|--------|---------|-----|---|-----------------------------------|-------------------|-----|
| | | | 総 数 | 男 | 女 | 世帯数 | 人 口 | | | | |
| 東五反田 | 3 丁目 | 843 | 1,713 | 805 | 908 | △ | 45 | △ | 100 | 12,236 | 2.0 |
| | 4 | 802 | 1,437 | 724 | 713 | △ | 27 | △ | 293 | 20,529 | 1.8 |
| | 5 | 1,033 | 2,449 | 991 | 1,458 | | 42 | | 197 | 10,204 | 2.4 |
| 西五反田 | 1 丁目 | 423 | 994 | 471 | 523 | △ | 32 | △ | 42 | 12,425 | 2.3 |
| | 2 | 582 | 1,178 | 494 | 684 | △ | 54 | △ | 144 | 11,780 | 2.0 |
| | 3 | 912 | 2,388 | 1,286 | 1,102 | △ | 75 | △ | 139 | 13,267 | 2.6 |
| | 4 | 1,828 | 4,451 | 2,316 | 2,135 | △ | 136 | △ | 246 | 29,673 | 2.4 |
| | 5 | 1,694 | 3,953 | 2,022 | 1,931 | | 16 | △ | 83 | 23,253 | 2.3 |
| | 6 | 1,006 | 2,508 | 1,235 | 1,273 | △ | 6 | △ | 67 | 25,080 | 2.5 |
| | 7 | 523 | 1,208 | 624 | 584 | △ | 16 | △ | 36 | 13,422 | 2.3 |
| | 8 | 662 | 1,368 | 714 | 654 | | 2 | | 19 | 17,100 | 2.1 |
| 大 崎 | 1 丁目 | 525 | 1,070 | 570 | 500 | | 4 | △ | 13 | 4,652 | 2.0 |
| | 2 | 838 | 1,961 | 1,006 | 955 | △ | 27 | △ | 35 | 16,342 | 2.3 |
| | 3 | 1,285 | 3,036 | 1,548 | 1,488 | | 8 | △ | 81 | 25,300 | 2.4 |
| | 4 | 1,346 | 3,020 | 1,477 | 1,543 | | 40 | | 111 | 30,200 | 2.2 |
| | 5 | 320 | 552 | 347 | 205 | △ | 61 | △ | 102 | 13,800 | 1.7 |
| 大 井 地 区 | | 36,189 | 88,750 | 44,458 | 44,292 | △ | 448 | △ | 1,650 | 20,981 | 2.5 |
| 東大井 | 1 丁目 | 1,136 | 2,834 | 1,530 | 1,304 | △ | 26 | △ | 108 | 10,121 | 2.5 |
| | 2 | 1,571 | 4,264 | 2,118 | 2,146 | △ | 86 | △ | 297 | 26,650 | 2.7 |
| | 3 | 2,348 | 5,107 | 2,562 | 2,545 | | 2 | △ | 59 | 28,372 | 2.2 |
| | 4 | 903 | 2,012 | 1,019 | 993 | △ | 56 | △ | 117 | 20,120 | 2.2 |
| | 5 | 1,249 | 2,923 | 1,446 | 1,477 | △ | 48 | △ | 165 | 24,358 | 2.3 |
| | 6 | 1,003 | 2,184 | 1,035 | 1,149 | | 25 | △ | 23 | 24,267 | 2.2 |
| 南大井 | 1 丁目 | 781 | 2,186 | 1,125 | 1,061 | △ | 19 | △ | 61 | 18,217 | 2.8 |
| | 2 | 200 | 506 | 269 | 237 | △ | 16 | △ | 8 | 5,622 | 2.5 |
| | 3 | 1,245 | 2,657 | 1,299 | 1,358 | △ | 32 | | 9 | 20,438 | 2.1 |
| | 4 | 956 | 2,614 | 1,394 | 1,220 | △ | 22 | △ | 53 | 20,108 | 2.7 |
| | 5 | 1,668 | 4,116 | 2,097 | 2,019 | | 203 | | 439 | 27,440 | 2.5 |
| | 6 | 1,794 | 4,615 | 2,215 | 2,400 | △ | 51 | △ | 79 | 24,289 | 2.6 |
| 勝 島 | 1 丁目 | 672 | 1,676 | 995 | 681 | △ | 46 | △ | 93 | 6,704 | 2.5 |
| | 2 | 365 | 784 | 506 | 278 | △ | 13 | △ | 31 | 2,010 | 2.1 |
| 大 井 | 1 丁目 | 1,708 | 3,818 | 1,837 | 1,981 | △ | 62 | △ | 209 | 22,459 | 2.2 |
| | 2 | 2,124 | 4,837 | 2,400 | 2,437 | △ | 69 | △ | 221 | 53,744 | 2.3 |
| | 3 | 1,895 | 4,463 | 2,096 | 2,367 | △ | 25 | △ | 148 | 31,879 | 2.4 |
| | 4 | 2,104 | 4,788 | 2,248 | 2,540 | | 10 | △ | 47 | 26,600 | 2.3 |
| | 5 | 1,794 | 4,361 | 2,183 | 2,178 | | 4 | △ | 22 | 29,073 | 2.4 |

| 町 | 丁 | 世帯数 | 人 口 | | | 対前年増・減比 | | 人口密度 (1km ² につき) | 1世帯 あたり 人 口 | | |
|---------|------|--------|---------|--------|--------|---------|---------|-----------------------------------|-------------------|--------|-----|
| | | | 総 数 | 男 | 女 | 世帯数 | 人 口 | | | | |
| 大 井 | 6 丁目 | 1,235 | 3,097 | 1,626 | 1,471 | 12 | 50 | 19,356 | 2.5 | | |
| | 7 | 1,410 | 3,400 | 1,653 | 1,747 | 32 △ | 11 | 22,667 | 2.4 | | |
| | 西大井 | 1 丁目 | 1,037 | 2,623 | 1,314 | 1,309 | △ | 33 △ | 118 | 17,487 | 2.5 |
| | | 2 | 1,562 | 4,477 | 2,185 | 2,292 | △ | 30 △ | 46 | 37,308 | 2.9 |
| | | 3 | 955 | 2,256 | 1,132 | 1,124 | △ | 7 △ | 38 | 25,067 | 2.4 |
| | | 4 | 1,469 | 3,701 | 1,922 | 1,779 | △ | 20 △ | 33 | 24,673 | 2.5 |
| | | 5 | 1,842 | 5,126 | 2,559 | 2,567 | △ | 57 △ | 94 | 28,478 | 2.8 |
| 6 | | 1,163 | 3,325 | 1,693 | 1,632 | △ | 18 △ | 67 | 27,708 | 2.9 | |
| 荏 原 地 区 | | 68,378 | 168,800 | 84,410 | 84,390 | △ 1,155 | △ 4,485 | 31,201 | 2.5 | | |
| 小山台 | 1 丁目 | 2,229 | 5,609 | 2,873 | 2,736 | △ | 43 △ | 90 | 32,994 | 2.5 | |
| | 2 | 736 | 2,197 | 1,133 | 1,064 | 77 | 346 | 16,900 | 3.0 | | |
| 小 山 | 1 丁目 | 605 | 1,605 | 824 | 781 | 11 △ | 44 | 22,929 | 2.7 | | |
| | 2 | 1,638 | 4,054 | 2,069 | 1,985 | △ | 9 △ | 139 | 40,540 | 2.5 | |
| | 3 | 1,378 | 3,101 | 1,526 | 1,575 | △ | 21 △ | 89 | 23,854 | 2.3 | |
| | 4 | 1,161 | 2,991 | 1,486 | 1,505 | △ | 70 △ | 98 | 37,388 | 2.6 | |
| | 5 | 1,325 | 3,219 | 1,574 | 1,645 | 34 △ | 80 | 29,264 | 2.4 | | |
| | 6 | 1,890 | 4,591 | 2,225 | 2,366 | △ | 34 △ | 118 | 38,258 | 2.4 | |
| | 7 | 382 | 994 | 465 | 529 | 13 | 12 | 11,044 | 2.6 | | |
| 荏 原 | 1 丁目 | 1,301 | 3,313 | 1,822 | 1,491 | △ | 85 △ | 139 | 27,608 | 2.5 | |
| | 2 | 1,029 | 2,459 | 1,158 | 1,301 | △ | 13 △ | 4 | 17,564 | 2.4 | |
| | 3 | 826 | 2,040 | 1,011 | 1,029 | △ | 1 △ | 42 | 34,000 | 2.5 | |
| | 4 | 1,402 | 3,573 | 1,838 | 1,735 | △ | 41 △ | 30 | 27,485 | 2.5 | |
| | 5 | 1,226 | 3,184 | 1,627 | 1,557 | 17 | 37 | 35,378 | 2.6 | | |
| | 6 | 1,338 | 3,486 | 1,769 | 1,717 | △ | 26 △ | 132 | 26,815 | 2.6 | |
| | 7 | 1,056 | 2,816 | 1,438 | 1,378 | △ | 63 △ | 170 | 23,467 | 2.7 | |
| 平 塚 | 1 丁目 | 1,587 | 3,623 | 1,842 | 1,781 | △ | 1 △ | 127 | 32,936 | 2.3 | |
| | 2 | 1,597 | 3,646 | 1,797 | 1,849 | △ | 18 △ | 120 | 33,145 | 2.3 | |
| | 3 | 1,024 | 2,580 | 1,295 | 1,285 | △ | 31 △ | 69 | 36,857 | 2.5 | |
| 旗 の 台 | 1 丁目 | 832 | 1,812 | 816 | 996 | △ | 32 △ | 86 | 15,100 | 2.2 | |
| | 2 | 1,123 | 2,649 | 1,269 | 1,380 | △ | 39 △ | 132 | 29,433 | 2.4 | |
| | 3 | 1,248 | 2,722 | 1,340 | 1,382 | △ | 42 △ | 71 | 30,244 | 2.2 | |
| | 4 | 1,536 | 3,474 | 1,731 | 1,743 | △ | 19 △ | 147 | 38,600 | 2.3 | |
| | 5 | 1,848 | 4,427 | 2,181 | 2,246 | △ | 101 △ | 146 | 31,621 | 2.4 | |
| | 6 | 1,271 | 3,299 | 1,580 | 1,719 | △ | 15 △ | 24 | 14,343 | 2.6 | |
| 中 延 | 1 丁目 | 966 | 2,305 | 1,257 | 1,048 | △ | 34 △ | 111 | 32,929 | 2.4 | |
| | 2 | 1,338 | 3,408 | 1,685 | 1,723 | △ | 49 △ | 124 | 42,600 | 2.5 | |

| 町 | 丁 | 世帯数 | 人 口 | | | 対前年増・減比 | | 人口密度 (1km ² につき) | 1世帯 あたり 人 口 |
|-----|------|-------|-------|-------|-------|---------|-----|-----------------------------------|-------------------|
| | | | 総 数 | 男 | 女 | 世帯数 | 人 口 | | |
| 中 延 | 3 丁目 | 944 | 2,279 | 1,133 | 1,146 | 27 △ | 65 | 32,557 | 2.4 |
| | 4 | 1,661 | 3,987 | 1,988 | 1,999 | △ 46 △ | 166 | 33,225 | 2.4 |
| | 5 | 1,514 | 3,649 | 1,800 | 1,849 | △ 2 △ | 91 | 36,490 | 2.4 |
| | 6 | 1,167 | 2,778 | 1,386 | 1,392 | △ 11 △ | 43 | 30,867 | 2.4 |
| 西中延 | 1 丁目 | 959 | 2,483 | 1,294 | 1,189 | △ 20 △ | 92 | 31,038 | 2.6 |
| | 2 | 1,296 | 3,437 | 1,734 | 1,703 | 1 △ | 80 | 34,370 | 2.7 |
| | 3 | 1,045 | 2,615 | 1,308 | 1,307 | △ 57 △ | 68 | 37,357 | 2.5 |
| 東中延 | 1 丁目 | 980 | 2,466 | 1,252 | 1,214 | △ 27 △ | 91 | 35,229 | 2.5 |
| | 2 | 826 | 2,176 | 1,046 | 1,130 | △ 7 △ | 68 | 36,267 | 2.6 |
| 戸 越 | 1 丁目 | 2,126 | 5,157 | 2,541 | 2,616 | 14 △ | 90 | 36,836 | 2.4 |
| | 2 | 1,275 | 3,204 | 1,554 | 1,650 | 17 △ | 19 | 45,771 | 2.5 |
| | 3 | 1,220 | 2,938 | 1,359 | 1,579 | △ 3 △ | 31 | 48,967 | 2.4 |
| | 4 | 1,224 | 3,010 | 1,498 | 1,512 | △ 46 △ | 166 | 43,000 | 2.5 |
| | 5 | 1,500 | 3,644 | 1,799 | 1,845 | △ 50 △ | 145 | 33,127 | 2.4 |
| | 6 | 1,674 | 4,289 | 2,140 | 2,149 | △ 86 △ | 223 | 35,742 | 2.6 |
| 豊 町 | 1 丁目 | 1,286 | 3,327 | 1,695 | 1,632 | 20 △ | 36 | 33,270 | 2.6 |
| | 2 | 1,598 | 4,010 | 1,963 | 2,047 | △ 71 △ | 111 | 25,063 | 2.5 |
| | 3 | 864 | 2,100 | 1,029 | 1,071 | 28 | 12 | 30,000 | 2.4 |
| | 4 | 1,680 | 4,035 | 2,038 | 1,997 | △ 37 △ | 136 | 40,350 | 2.4 |
| | 5 | 1,164 | 2,741 | 1,361 | 1,380 | △ 8 △ | 81 | 45,683 | 2.4 |
| | 6 | 1,940 | 4,712 | 2,371 | 2,341 | 46 △ | 127 | 39,267 | 2.4 |
| 二 葉 | 1 丁目 | 2,236 | 5,222 | 2,672 | 2,550 | △ 55 △ | 182 | 30,718 | 2.3 |
| | 2 | 1,353 | 3,272 | 1,668 | 1,604 | △ 50 △ | 100 | 32,720 | 2.4 |
| | 3 | 1,427 | 3,898 | 2,010 | 1,888 | △ 71 △ | 194 | 43,311 | 2.7 |
| | 4 | 1,527 | 4,194 | 2,140 | 2,054 | △ 26 △ | 155 | 34,950 | 2.7 |

注) 人口密度算出に使用する面積は、土地・建物編、町丁別面積による。

町丁別人口密度



当区における昭和49年1月1日現在の人口密度は1km²あたり22,541人であるがこれは23区中豊島区、中野区について第3位である。

区内は123の町丁に分かれており、人口密度の高い地域は第2京浜国道と中原街道にはさまれた荏原地区の中央部である。人口密度の低い地域は山手通りを境に港区側、東海道本線より海岸側である。

町丁別では人口密度の最も高いのが大井2丁目の53,744人、次いで戸越3丁目の48,967人、戸越2丁目の45,771人の順となっており人口密度40,000人以上の町丁は10町丁、30,000~39,999人は40町丁、20,000~29,999人は36町丁、10,000~19,999人は24町丁、10,000人以下は13町丁である。

3 住民基本台帳による

(各年1)

| 出張所および区分 | | 昭和40年 | 41 | 42 | 43 |
|----------|-----|---------|---------|---------|---------|
| 総数 | 世帯数 | 151,359 | 154,719 | 153,361 | 156,293 |
| | 人口 | 410,637 | 407,230 | 398,079 | 399,974 |
| 品川第1 | 世帯数 | 9,337 | 9,549 | 9,084 | 9,153 |
| | 人口 | 25,553 | 25,465 | 24,099 | 23,544 |
| 第2 | 世帯数 | 9,532 | 9,576 | 9,131 | 8,893 |
| | 人口 | 26,803 | 26,245 | 24,865 | 23,000 |
| 大崎第1 | 世帯数 | 13,195 | 13,028 | 12,878 | 13,305 |
| | 人口 | 31,890 | 31,276 | 29,858 | 30,925 |
| 第2 | 世帯数 | 14,994 | 15,123 | 15,396 | 15,607 |
| | 人口 | 36,495 | 36,576 | 36,817 | 36,932 |
| 大井第1 | 世帯数 | 15,309 | 15,843 | 15,885 | 16,154 |
| | 人口 | 42,957 | 42,223 | 41,386 | 40,716 |
| 第2 | 世帯数 | 10,762 | 11,135 | 11,023 | 11,663 |
| | 人口 | 29,713 | 29,569 | 28,651 | 29,934 |
| 第3 | 世帯数 | 8,815 | 9,035 | 8,925 | 9,075 |
| | 人口 | 26,376 | 26,308 | 26,005 | 25,989 |
| 荏原第1 | 世帯数 | 16,147 | 16,385 | 16,161 | 16,316 |
| | 人口 | 39,962 | 39,640 | 39,007 | 38,965 |
| 第2 | 世帯数 | 9,430 | 9,706 | 9,704 | 9,829 |
| | 人口 | 25,445 | 25,574 | 25,738 | 25,843 |
| 第3 | 世帯数 | 16,370 | 17,030 | 16,934 | 17,338 |
| | 人口 | 46,277 | 46,022 | 44,881 | 45,467 |
| 第4 | 世帯数 | 15,531 | 15,980 | 16,377 | 16,695 |
| | 人口 | 44,463 | 43,638 | 43,195 | 44,888 |
| 第5 | 世帯数 | 11,937 | 12,329 | 11,863 | 12,265 |
| | 人口 | 34,703 | 34,694 | 33,577 | 33,771 |

出張所別世帯と人口の推移

月1日)

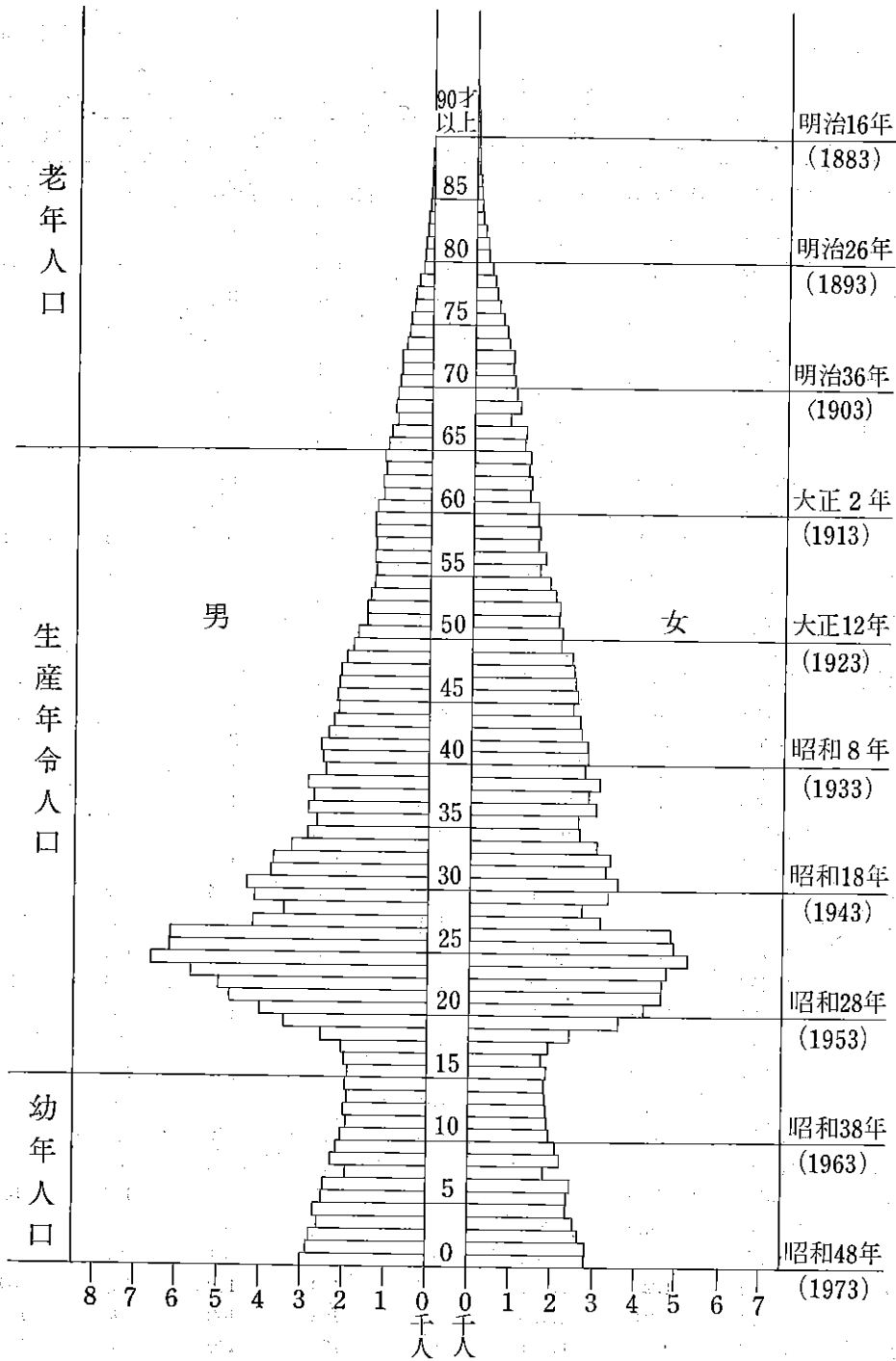
| | 44 | 45 | 46 | 47 | 48 | 49 |
|--|---------|---------|---------|---------|---------|---------|
| | 156,431 | 156,278 | 156,054 | 154,450 | 152,542 | 150,356 |
| | 396,558 | 391,703 | 388,122 | 381,143 | 374,534 | 366,061 |
| | 9,236 | 9,263 | 9,320 | 9,617 | 9,725 | 9,778 |
| | 23,692 | 23,405 | 23,190 | 24,070 | 24,524 | 24,235 |
| | 8,820 | 9,035 | 9,183 | 8,986 | 9,027 | 8,953 |
| | 22,607 | 21,806 | 22,110 | 21,306 | 21,252 | 20,998 |
| | 13,127 | 15,117 | 15,333 | 15,022 | 14,919 | 14,599 |
| | 29,941 | 34,619 | 34,713 | 34,150 | 34,030 | 32,978 |
| | 15,386 | 12,738 | 12,397 | 12,300 | 12,157 | 11,968 |
| | 36,377 | 30,348 | 29,602 | 29,015 | 28,554 | 27,923 |
| | 16,037 | 15,872 | 16,593 | 16,555 | 16,076 | 15,891 |
| | 39,817 | 39,252 | 40,523 | 40,330 | 39,124 | 38,478 |
| | 11,625 | 11,739 | 11,823 | 11,739 | 11,599 | 11,390 |
| | 30,236 | 30,311 | 30,043 | 29,404 | 28,627 | 27,790 |
| | 9,284 | 9,611 | 9,720 | 9,564 | 9,631 | 9,546 |
| | 26,075 | 25,923 | 25,919 | 25,527 | 25,344 | 25,115 |
| | 16,117 | 15,840 | 15,234 | 14,890 | 14,409 | 14,276 |
| | 38,214 | 38,579 | 37,519 | 36,763 | 35,965 | 35,513 |
| | 9,905 | 9,937 | 9,953 | 9,826 | 9,832 | 9,635 |
| | 25,768 | 25,359 | 25,124 | 24,751 | 24,687 | 24,026 |
| | 17,409 | 17,322 | 17,044 | 16,692 | 16,314 | 16,042 |
| | 45,750 | 44,857 | 43,626 | 42,240 | 40,987 | 39,779 |
| | 16,943 | 17,298 | 17,004 | 16,924 | 16,668 | 16,360 |
| | 44,584 | 44,397 | 43,356 | 42,406 | 41,233 | 39,910 |
| | 12,542 | 12,506 | 12,450 | 12,335 | 12,185 | 11,916 |
| | 33,497 | 32,847 | 32,397 | 31,181 | 30,207 | 29,316 |

4 住民基本台帳による年令別、男女別人口

(昭和49年1月1日)

| 年令 | 総数 | 男 | 女 | 年令 | 総数 | 男 | 女 | 年令 | 総数 | 男 | 女 |
|---------|---------|---------|---------|---------|--------|--------|--------|---------|-------|-------|-------|
| 総数 | 356,061 | 183,545 | 182,516 | 34歳 | 5,514 | 2,903 | 2,611 | 69歳 | 1,859 | 860 | 999 |
| 0 ~ 4歳 | 27,241 | 14,008 | 13,233 | 35 ~ 39 | 28,029 | 13,779 | 14,250 | 70 ~ 74 | 7,954 | 3,547 | 4,407 |
| 0 | 5,820 | 3,004 | 2,816 | 35 | 5,310 | 2,707 | 2,603 | 70 | 1,776 | 790 | 986 |
| 1 | 5,707 | 2,869 | 2,838 | 36 | 5,913 | 2,904 | 3,009 | 71 | 1,675 | 766 | 909 |
| 2 | 5,475 | 2,816 | 2,659 | 37 | 5,601 | 2,765 | 2,836 | 72 | 1,697 | 766 | 931 |
| 3 | 5,168 | 2,613 | 2,555 | 38 | 5,998 | 2,918 | 3,080 | 73 | 1,463 | 646 | 817 |
| 4 | 5,071 | 2,706 | 2,365 | 39 | 5,207 | 2,465 | 2,722 | 74 | 1,343 | 579 | 764 |
| 5 ~ 9 | 22,336 | 11,341 | 10,995 | 40 ~ 44 | 25,411 | 12,038 | 13,373 | 75 ~ 79 | 4,666 | 2,061 | 2,605 |
| 5 | 4,901 | 2,492 | 2,409 | 40 | 5,358 | 2,545 | 2,813 | 75 | 1,212 | 541 | 671 |
| 6 | 4,892 | 2,436 | 2,456 | 41 | 5,372 | 2,575 | 2,797 | 76 | 1,062 | 481 | 581 |
| 7 | 3,731 | 1,925 | 1,806 | 42 | 5,087 | 2,426 | 2,661 | 77 | 946 | 432 | 514 |
| 8 | 4,522 | 2,315 | 2,207 | 43 | 4,948 | 2,309 | 2,639 | 78 | 765 | 344 | 421 |
| 9 | 4,290 | 2,173 | 2,117 | 44 | 4,646 | 2,183 | 2,463 | 79 | 681 | 263 | 418 |
| 10 ~ 14 | 19,331 | 9,894 | 9,437 | 45 ~ 49 | 22,511 | 10,397 | 12,114 | 80 ~ 84 | 1,968 | 822 | 1,146 |
| 10 | 4,017 | 2,063 | 1,954 | 45 | 4,795 | 2,223 | 2,572 | 80 | 537 | 227 | 310 |
| 11 | 3,865 | 1,955 | 1,910 | 46 | 4,668 | 2,177 | 2,491 | 81 | 504 | 213 | 291 |
| 12 | 3,886 | 2,000 | 1,886 | 47 | 4,616 | 2,145 | 2,471 | 82 | 347 | 131 | 216 |
| 13 | 3,761 | 1,912 | 1,849 | 48 | 4,443 | 2,010 | 2,433 | 83 | 315 | 143 | 172 |
| 14 | 3,802 | 1,964 | 1,838 | 49 | 3,989 | 1,842 | 2,147 | 84 | 265 | 108 | 157 |
| 15 ~ 19 | 23,470 | 11,995 | 11,475 | 50 ~ 54 | 17,796 | 7,582 | 10,214 | 85 ~ 89 | 632 | 215 | 417 |
| 15 | 3,768 | 1,918 | 1,850 | 50 | 3,891 | 1,731 | 2,160 | 85 | 208 | 71 | 137 |
| 16 | 3,735 | 1,995 | 1,740 | 51 | 3,591 | 1,527 | 2,064 | 86 | 166 | 56 | 110 |
| 17 | 4,001 | 2,083 | 1,918 | 52 | 3,640 | 1,526 | 2,114 | 87 | 104 | 39 | 65 |
| 18 | 4,960 | 2,543 | 2,417 | 53 | 3,447 | 1,446 | 2,001 | 88 | 99 | 32 | 67 |
| 19 | 7,006 | 3,456 | 3,550 | 54 | 3,227 | 1,352 | 1,875 | 89 | 55 | 17 | 38 |
| 20 ~ 24 | 49,538 | 26,166 | 23,372 | 55 ~ 59 | 14,926 | 6,769 | 8,157 | 90 ~ 94 | 138 | 32 | 106 |
| 20 | 8,224 | 4,030 | 4,194 | 55 | 2,938 | 1,323 | 1,615 | 90 | 57 | 13 | 44 |
| 21 | 9,394 | 4,778 | 4,616 | 56 | 3,139 | 1,361 | 1,778 | 91 | 34 | 11 | 23 |
| 22 | 9,648 | 5,029 | 4,619 | 57 | 2,944 | 1,355 | 1,589 | 92 | 18 | 2 | 16 |
| 23 | 10,432 | 5,709 | 4,723 | 58 | 2,976 | 1,364 | 1,612 | 93 | 22 | 4 | 18 |
| 24 | 11,840 | 6,620 | 5,220 | 59 | 2,929 | 1,366 | 1,563 | 94 | 7 | 2 | 5 |
| 25 ~ 29 | 43,117 | 24,247 | 18,870 | 60 ~ 64 | 12,936 | 5,888 | 7,048 | 95 ~ 99 | 14 | 2 | 12 |
| 25 | 11,101 | 6,209 | 4,892 | 60 | 2,898 | 1,314 | 1,584 | 95 | 6 | — | 6 |
| 26 | 11,023 | 6,191 | 4,832 | 61 | 2,561 | 1,178 | 1,383 | 96 | 3 | 1 | 2 |
| 27 | 7,343 | 4,219 | 3,124 | 62 | 2,590 | 1,183 | 1,407 | 97 | 3 | 1 | 2 |
| 28 | 6,163 | 3,460 | 2,703 | 63 | 2,418 | 1,098 | 1,320 | 98 | 2 | — | 2 |
| 29 | 7,487 | 4,168 | 3,319 | 64 | 2,469 | 1,115 | 1,354 | 99 | — | — | — |
| 30 ~ 34 | 33,924 | 18,098 | 15,826 | 65 ~ 69 | 10,122 | 4,664 | 5,458 | 100歳以上 | 1 | — | 1 |
| 30 | 7,903 | 4,368 | 3,535 | 65 | 2,289 | 1,062 | 1,227 | 100 | 1 | — | 1 |
| 31 | 7,059 | 3,788 | 3,271 | 66 | 2,232 | 997 | 1,235 | | | | |
| 32 | 7,103 | 3,726 | 3,377 | 67 | 1,721 | 843 | 878 | | | | |
| 33 | 6,345 | 3,313 | 3,032 | 68 | 2,021 | 902 | 1,119 | | | | |

年令別, 男女別人口



本表は昭和49年1月1日現在の住民基本台帳による人口を年令別, 男女別に表わしたものである。

人口構成は男女とも17歳から増加傾向を示し, 24歳を頂点として54歳にかけて大きくふくらんでおり, 典型的な都市型の人口形式をなしている。

ついで年令構成をみると20歳台が92,655人 (25.31%) と全体の1/4以上を占め, 次いで30歳台の16.92%, 0~9歳台の13.54%, 40歳台の13.09%となっている。

5 住民基本台帳による町丁別, 年令

(昭和 49 1)

| 町 丁 | 総 数 | | | 0 ~ 4 歳 | | | 5 ~ 9 歳 | | |
|--------------|---------|---------|---------|---------|--------|--------|---------|--------|--------|
| | 総 数 | 男 | 女 | 総 数 | 男 | 女 | 総 数 | 男 | 女 |
| 総 数 | 366,061 | 183,545 | 182,516 | 27,241 | 14,008 | 13,233 | 22,336 | 11,341 | 10,995 |
| 北品川 1 | 4,789 | 2,363 | 2,426 | 431 | 222 | 209 | 389 | 202 | 187 |
| 2 | 4,488 | 2,216 | 2,272 | 349 | 183 | 166 | 291 | 155 | 136 |
| 3 | 2,663 | 1,350 | 1,313 | 262 | 130 | 132 | 234 | 120 | 114 |
| 4 | 732 | 369 | 363 | 46 | 20 | 26 | 28 | 11 | 17 |
| 5 | 2,125 | 1,114 | 1,011 | 156 | 73 | 83 | 113 | 65 | 48 |
| 6 | 706 | 349 | 357 | 60 | 28 | 32 | 47 | 29 | 18 |
| 東品川 1 | 4,481 | 2,329 | 2,152 | 399 | 215 | 184 | 268 | 140 | 128 |
| 2 | 1,214 | 630 | 584 | 179 | 94 | 85 | 125 | 65 | 60 |
| 3 | 2,507 | 1,353 | 1,154 | 261 | 128 | 133 | 227 | 96 | 131 |
| 4 | 377 | 243 | 134 | 11 | 7 | 4 | 20 | 10 | 10 |
| 5 | 15 | 11 | 4 | — | — | — | 2 | 1 | 1 |
| 東品川 地先埋立地 | 158 | 107 | 51 | 17 | 11 | 6 | 11 | 7 | 4 |
| 南品川 1 | 1,791 | 928 | 863 | 132 | 69 | 63 | 105 | 48 | 57 |
| 2 | 3,016 | 1,573 | 1,443 | 186 | 92 | 94 | 148 | 76 | 72 |
| 3 | 1,689 | 841 | 848 | 144 | 70 | 74 | 113 | 58 | 55 |
| 4 | 4,721 | 2,518 | 2,203 | 309 | 173 | 136 | 270 | 135 | 135 |
| 5 | 5,696 | 2,903 | 2,793 | 420 | 210 | 210 | 296 | 153 | 143 |
| 6 | 3,411 | 1,566 | 1,845 | 233 | 106 | 127 | 149 | 82 | 67 |
| 西品川 1 | 5,808 | 3,100 | 2,708 | 408 | 215 | 193 | 330 | 172 | 158 |
| 2 | 4,826 | 2,489 | 2,337 | 383 | 192 | 191 | 337 | 180 | 157 |
| 3 | 3,837 | 2,002 | 1,835 | 288 | 147 | 141 | 219 | 104 | 115 |
| 広 町 1 | 149 | 100 | 49 | 9 | 5 | 4 | 7 | 5 | 2 |
| 2 | 2,934 | 1,474 | 1,460 | 121 | 64 | 57 | 236 | 128 | 108 |
| 上大崎 1 | 3,216 | 1,511 | 1,705 | 188 | 95 | 93 | 174 | 87 | 87 |
| 2 | 2,124 | 1,016 | 1,108 | 130 | 72 | 58 | 98 | 41 | 57 |
| 3 | 3,001 | 1,388 | 1,613 | 203 | 82 | 121 | 142 | 60 | 82 |
| 4 | 1,571 | 599 | 972 | 106 | 60 | 46 | 71 | 31 | 40 |
| 東五反田 1 | 1,881 | 921 | 960 | 112 | 61 | 51 | 100 | 52 | 48 |
| 2 | 1,299 | 684 | 615 | 61 | 38 | 23 | 56 | 25 | 31 |
| 3 | 1,713 | 805 | 908 | 96 | 47 | 49 | 70 | 27 | 43 |
| 4 | 1,437 | 724 | 713 | 93 | 41 | 52 | 82 | 39 | 43 |
| 5 | 2,449 | 991 | 1,458 | 150 | 80 | 70 | 117 | 57 | 60 |
| 西五反田 1 | 994 | 471 | 523 | 55 | 23 | 32 | 53 | 25 | 28 |
| 2 | 1,178 | 494 | 684 | 64 | 33 | 31 | 47 | 27 | 20 |
| 3 | 2,388 | 1,286 | 1,102 | 226 | 123 | 103 | 143 | 69 | 74 |
| 4 | 4,451 | 2,316 | 2,135 | 312 | 152 | 160 | 295 | 154 | 141 |
| 5 | 3,953 | 2,022 | 1,931 | 251 | 133 | 118 | 205 | 105 | 100 |
| 6 | 2,508 | 1,235 | 1,273 | 159 | 81 | 78 | 155 | 90 | 65 |
| 7 | 1,208 | 624 | 584 | 81 | 39 | 42 | 58 | 30 | 28 |
| 8 | 1,368 | 714 | 654 | 57 | 31 | 26 | 72 | 32 | 40 |
| 大 崎 1 | 1,070 | 570 | 500 | 65 | 38 | 27 | 61 | 32 | 29 |
| 2 | 1,961 | 1,006 | 955 | 150 | 76 | 74 | 112 | 57 | 55 |
| 3 | 3,036 | 1,548 | 1,488 | 189 | 112 | 77 | 190 | 99 | 91 |

別および男女別人口 (5 歳間隔)

月 1 日 現在)

| 10 ~ 14 歳 | | | 15 ~ 19 歳 | | | 20 ~ 24 歳 | | | 25 ~ 29 歳 | | |
|-----------|-------|-------|-----------|--------|--------|-----------|--------|--------|-----------|--------|--------|
| 総 数 | 男 | 女 | 総 数 | 男 | 女 | 総 数 | 男 | 女 | 総 数 | 男 | 女 |
| 19,331 | 9,894 | 9,437 | 23,470 | 11,995 | 11,475 | 49,538 | 26,166 | 23,372 | 43,117 | 24,247 | 18,870 |
| 246 | 132 | 114 | 306 | 124 | 182 | 563 | 272 | 291 | 469 | 254 | 215 |
| 242 | 133 | 109 | 256 | 124 | 132 | 425 | 227 | 198 | 494 | 261 | 233 |
| 176 | 84 | 92 | 178 | 98 | 80 | 312 | 176 | 136 | 266 | 132 | 134 |
| 37 | 19 | 18 | 65 | 33 | 32 | 109 | 67 | 42 | 91 | 57 | 34 |
| 111 | 53 | 58 | 174 | 102 | 72 | 306 | 208 | 98 | 244 | 130 | 114 |
| 29 | 14 | 15 | 37 | 19 | 18 | 80 | 35 | 45 | 91 | 45 | 46 |
| 199 | 107 | 92 | 300 | 148 | 152 | 532 | 298 | 234 | 555 | 328 | 227 |
| 73 | 29 | 44 | 73 | 48 | 25 | 122 | 81 | 41 | 130 | 69 | 61 |
| 138 | 75 | 63 | 194 | 133 | 61 | 289 | 198 | 91 | 258 | 156 | 102 |
| 9 | 8 | 1 | 68 | 44 | 24 | 116 | 84 | 32 | 46 | 31 | 15 |
| — | — | — | — | — | — | 2 | 2 | — | 2 | 2 | — |
| 5 | 3 | 2 | 3 | 2 | 1 | 29 | 22 | 7 | 30 | 24 | 6 |
| 85 | 53 | 32 | 102 | 54 | 48 | 225 | 142 | 83 | 177 | 100 | 77 |
| 137 | 76 | 61 | 238 | 133 | 105 | 468 | 252 | 216 | 358 | 228 | 130 |
| 79 | 37 | 42 | 107 | 53 | 54 | 206 | 112 | 94 | 221 | 117 | 104 |
| 253 | 136 | 117 | 265 | 134 | 131 | 742 | 478 | 264 | 591 | 405 | 186 |
| 259 | 138 | 121 | 359 | 172 | 187 | 703 | 396 | 307 | 675 | 362 | 313 |
| 136 | 76 | 60 | 288 | 100 | 188 | 624 | 257 | 367 | 409 | 229 | 180 |
| 305 | 150 | 155 | 471 | 228 | 243 | 985 | 595 | 390 | 721 | 461 | 260 |
| 258 | 141 | 117 | 263 | 143 | 120 | 595 | 335 | 260 | 556 | 315 | 241 |
| 185 | 101 | 84 | 252 | 146 | 106 | 519 | 311 | 208 | 455 | 264 | 191 |
| 7 | 5 | 2 | 11 | 8 | 3 | 37 | 33 | 4 | 15 | 11 | 4 |
| 393 | 200 | 193 | 456 | 237 | 219 | 234 | 114 | 120 | 54 | 27 | 27 |
| 195 | 88 | 107 | 192 | 85 | 107 | 367 | 180 | 187 | 373 | 197 | 176 |
| 104 | 50 | 54 | 123 | 61 | 62 | 289 | 157 | 132 | 273 | 135 | 138 |
| 125 | 66 | 59 | 159 | 77 | 82 | 381 | 178 | 203 | 419 | 239 | 180 |
| 55 | 28 | 27 | 203 | 44 | 159 | 273 | 54 | 219 | 153 | 62 | 91 |
| 94 | 49 | 45 | 125 | 75 | 50 | 242 | 137 | 105 | 223 | 119 | 104 |
| 73 | 27 | 46 | 100 | 66 | 34 | 219 | 150 | 69 | 156 | 101 | 55 |
| 60 | 36 | 24 | 108 | 45 | 63 | 276 | 125 | 151 | 193 | 111 | 82 |
| 70 | 40 | 30 | 74 | 40 | 34 | 193 | 107 | 86 | 223 | 150 | 73 |
| 102 | 50 | 52 | 213 | 60 | 153 | 366 | 105 | 261 | 281 | 114 | 167 |
| 49 | 29 | 20 | 61 | 32 | 29 | 104 | 58 | 46 | 102 | 59 | 43 |
| 37 | 8 | 29 | 57 | 31 | 26 | 137 | 72 | 65 | 145 | 75 | 70 |
| 148 | 75 | 73 | 216 | 118 | 98 | 319 | 189 | 130 | 277 | 161 | 116 |
| 234 | 112 | 122 | 263 | 149 | 114 | 659 | 366 | 293 | 556 | 321 | 235 |
| 202 | 95 | 107 | 276 | 150 | 126 | 601 | 350 | 251 | 469 | 260 | 209 |
| 156 | 77 | 79 | 155 | 73 | 82 | 329 | 160 | 169 | 279 | 164 | 115 |
| 62 | 39 | 23 | 76 | 36 | 40 | 169 | 78 | 91 | 149 | 104 | 45 |
| 53 | 33 | 20 | 98 | 49 | 49 | 277 | 166 | 111 | 175 | 105 | 70 |
| 44 | 20 | 24 | 116 | 39 | 77 | 180 | 103 | 77 | 138 | 87 | 51 |
| 104 | 47 | 57 | 108 | 56 | 52 | 291 | 179 | 112 | 271 | 155 | 116 |
| 145 | 65 | 80 | 174 | 109 | 65 | 487 | 264 | 223 | 357 | 193 | 164 |

| 町 丁 | 總 数 | | | 0 ~ 4 歲 | | | 5 ~ 9 歲 | | | |
|-------|-----|-------|-------|---------|-----|-----|---------|-----|-----|-----|
| | 總 数 | 男 | 女 | 總 数 | 男 | 女 | 總 数 | 男 | 女 | |
| 大 崎 | 4 | 3,020 | 1,477 | 1,543 | 204 | 105 | 99 | 156 | 83 | 73 |
| | 5 | 552 | 347 | 205 | 21 | 10 | 11 | 19 | 11 | 8 |
| 東 大 井 | 1 | 2,834 | 1,530 | 1,304 | 214 | 111 | 103 | 193 | 95 | 98 |
| | 2 | 4,264 | 2,118 | 2,146 | 342 | 180 | 162 | 287 | 143 | 144 |
| | 3 | 5,107 | 2,562 | 2,545 | 326 | 157 | 169 | 298 | 155 | 143 |
| | 4 | 2,012 | 1,019 | 993 | 189 | 109 | 80 | 166 | 88 | 78 |
| | 5 | 2,923 | 1,446 | 1,477 | 154 | 81 | 73 | 146 | 68 | 78 |
| | 6 | 2,184 | 1,035 | 1,149 | 105 | 58 | 47 | 80 | 36 | 44 |
| 南 大 井 | 1 | 2,186 | 1,125 | 1,061 | 141 | 78 | 63 | 135 | 78 | 57 |
| | 2 | 506 | 269 | 237 | 38 | 21 | 17 | 37 | 23 | 14 |
| | 3 | 2,657 | 1,299 | 1,358 | 207 | 100 | 107 | 158 | 87 | 71 |
| | 4 | 2,614 | 1,394 | 1,220 | 234 | 141 | 93 | 188 | 103 | 85 |
| | 5 | 4,116 | 2,097 | 2,019 | 351 | 195 | 156 | 262 | 133 | 129 |
| | 6 | 4,615 | 2,215 | 2,400 | 473 | 238 | 235 | 333 | 154 | 179 |
| 勝 島 | 1 | 1,676 | 995 | 681 | 94 | 45 | 49 | 123 | 54 | 69 |
| | 2 | 784 | 506 | 278 | 51 | 29 | 22 | 68 | 31 | 37 |
| 大 井 | 1 | 3,818 | 1,837 | 1,981 | 256 | 140 | 116 | 172 | 88 | 84 |
| | 2 | 4,837 | 2,400 | 2,437 | 268 | 150 | 108 | 259 | 135 | 124 |
| | 3 | 4,463 | 2,096 | 2,367 | 269 | 127 | 142 | 230 | 102 | 128 |
| | 4 | 4,788 | 2,248 | 2,540 | 291 | 140 | 151 | 286 | 149 | 137 |
| | 5 | 4,361 | 2,183 | 2,178 | 353 | 186 | 167 | 276 | 142 | 134 |
| | 6 | 3,097 | 1,626 | 1,471 | 324 | 165 | 159 | 251 | 116 | 135 |
| | 7 | 3,400 | 1,653 | 1,747 | 295 | 153 | 142 | 232 | 123 | 109 |
| 西 大 井 | 1 | 2,623 | 1,314 | 1,309 | 203 | 106 | 97 | 156 | 72 | 84 |
| | 2 | 4,477 | 2,185 | 2,292 | 391 | 202 | 189 | 298 | 150 | 148 |
| | 3 | 2,256 | 1,132 | 1,124 | 193 | 110 | 83 | 130 | 70 | 60 |
| | 4 | 3,701 | 1,922 | 1,779 | 310 | 157 | 153 | 234 | 121 | 113 |
| | 5 | 5,126 | 2,559 | 2,567 | 530 | 278 | 252 | 357 | 160 | 197 |
| | 6 | 3,325 | 1,693 | 1,632 | 259 | 115 | 144 | 233 | 120 | 113 |
| 小 山 台 | 1 | 5,609 | 2,873 | 2,736 | 423 | 217 | 206 | 359 | 185 | 174 |
| | 2 | 2,197 | 1,133 | 1,064 | 236 | 134 | 102 | 192 | 95 | 97 |
| 小 山 | 1 | 1,605 | 824 | 781 | 129 | 74 | 55 | 115 | 57 | 58 |
| | 2 | 4,054 | 2,069 | 1,985 | 316 | 151 | 165 | 264 | 146 | 118 |
| | 3 | 3,101 | 1,526 | 1,575 | 225 | 119 | 106 | 187 | 87 | 100 |
| | 4 | 2,991 | 1,486 | 1,505 | 211 | 111 | 100 | 177 | 89 | 88 |
| | 5 | 3,219 | 1,574 | 1,645 | 250 | 137 | 113 | 200 | 99 | 101 |
| | 6 | 4,591 | 2,225 | 2,366 | 332 | 156 | 176 | 249 | 124 | 125 |
| | 7 | 994 | 465 | 529 | 71 | 32 | 39 | 48 | 25 | 23 |
| 荏 原 | 1 | 3,313 | 1,822 | 1,491 | 263 | 137 | 126 | 176 | 86 | 90 |
| | 2 | 2,459 | 1,158 | 1,301 | 175 | 89 | 86 | 153 | 83 | 70 |
| | 3 | 2,040 | 1,011 | 1,029 | 151 | 87 | 64 | 121 | 69 | 52 |
| | 4 | 3,573 | 1,838 | 1,735 | 304 | 152 | 152 | 204 | 103 | 101 |
| | 5 | 3,184 | 1,627 | 1,557 | 282 | 152 | 130 | 208 | 107 | 101 |
| | 6 | 3,486 | 1,769 | 1,717 | 266 | 129 | 137 | 240 | 121 | 119 |
| | 7 | 2,816 | 1,438 | 1,378 | 202 | 107 | 95 | 194 | 102 | 92 |

| 10 ~ 14 歲 | | | 15 ~ 19 歲 | | | 20 ~ 24 歲 | | | 25 ~ 29 歲 | | |
|-----------|-----|-----|-----------|-----|-----|-----------|-----|-----|-----------|-----|-----|
| 總 数 | 男 | 女 | 總 数 | 男 | 女 | 總 数 | 男 | 女 | 總 数 | 男 | 女 |
| 154 | 76 | 78 | 154 | 77 | 77 | 435 | 219 | 216 | 403 | 231 | 172 |
| 25 | 13 | 12 | 31 | 15 | 16 | 100 | 72 | 28 | 99 | 76 | 23 |
| 160 | 89 | 71 | 195 | 101 | 94 | 401 | 264 | 137 | 353 | 216 | 137 |
| 233 | 108 | 125 | 247 | 111 | 136 | 503 | 253 | 250 | 506 | 292 | 214 |
| 222 | 116 | 106 | 338 | 174 | 164 | 766 | 387 | 379 | 618 | 375 | 243 |
| 117 | 59 | 58 | 170 | 86 | 84 | 309 | 163 | 146 | 199 | 103 | 96 |
| 117 | 56 | 61 | 179 | 101 | 78 | 406 | 217 | 189 | 361 | 208 | 153 |
| 98 | 45 | 53 | 129 | 64 | 65 | 362 | 167 | 195 | 261 | 152 | 109 |
| 139 | 66 | 73 | 147 | 78 | 69 | 252 | 134 | 118 | 250 | 141 | 109 |
| 23 | 10 | 13 | 30 | 19 | 11 | 50 | 31 | 19 | 62 | 42 | 20 |
| 104 | 54 | 50 | 151 | 81 | 70 | 376 | 231 | 145 | 372 | 197 | 175 |
| 144 | 74 | 70 | 166 | 100 | 66 | 298 | 172 | 126 | 277 | 158 | 119 |
| 198 | 106 | 92 | 244 | 122 | 122 | 510 | 261 | 249 | 553 | 331 | 222 |
| 256 | 122 | 134 | 217 | 97 | 120 | 462 | 222 | 240 | 482 | 210 | 272 |
| 206 | 109 | 97 | 162 | 88 | 74 | 210 | 173 | 37 | 189 | 163 | 26 |
| 37 | 22 | 15 | 78 | 60 | 18 | 87 | 73 | 14 | 52 | 34 | 18 |
| 138 | 64 | 74 | 233 | 125 | 108 | 526 | 262 | 264 | 482 | 256 | 226 |
| 225 | 117 | 108 | 263 | 133 | 130 | 780 | 392 | 388 | 610 | 347 | 263 |
| 271 | 137 | 134 | 310 | 161 | 149 | 629 | 302 | 327 | 523 | 281 | 242 |
| 244 | 135 | 109 | 288 | 141 | 147 | 658 | 313 | 345 | 584 | 319 | 265 |
| 228 | 122 | 106 | 281 | 127 | 154 | 565 | 300 | 265 | 542 | 316 | 226 |
| 180 | 104 | 76 | 171 | 111 | 60 | 347 | 222 | 125 | 384 | 213 | 171 |
| 162 | 71 | 91 | 146 | 72 | 74 | 376 | 177 | 199 | 437 | 254 | 183 |
| 134 | 70 | 64 | 163 | 74 | 89 | 398 | 212 | 186 | 313 | 175 | 138 |
| 250 | 124 | 126 | 284 | 155 | 129 | 492 | 231 | 261 | 494 | 259 | 235 |
| 98 | 46 | 52 | 107 | 56 | 51 | 300 | 167 | 133 | 302 | 155 | 147 |
| 208 | 103 | 105 | 219 | 129 | 90 | 499 | 296 | 203 | 428 | 239 | 189 |
| 319 | 154 | 165 | 283 | 140 | 143 | 556 | 310 | 246 | 582 | 302 | 280 |
| 199 | 102 | 97 | 232 | 143 | 89 | 367 | 199 | 168 | 368 | 208 | 160 |
| 300 | 166 | 134 | 353 | 187 | 166 | 774 | 403 | 371 | 673 | 398 | 275 |
| 149 | 79 | 70 | 114 | 62 | 52 | 195 | 110 | 85 | 195 | 99 | 96 |
| 93 | 47 | 46 | 90 | 51 | 39 | 208 | 114 | 94 | 179 | 103 | 76 |
| 222 | 104 | 118 | 281 | 147 | 134 | 583 | 319 | 264 | 421 | 236 | 185 |
| 135 | 69 | 66 | 194 | 105 | 89 | 455 | 250 | 205 | 372 | 206 | 166 |
| 171 | 98 | 73 | 176 | 91 | 85 | 396 | 193 | 203 | 336 | 189 | 147 |
| 171 | 85 | 86 | 194 | 93 | 101 | 428 | 210 | 218 | 390 | 206 | 184 |
| 228 | 105 | 123 | 270 | 134 | 136 | 598 | 296 | 302 | 573 | 325 | 248 |
| 51 | 29 | 22 | 61 | 31 | 30 | 88 | 38 | 50 | 104 | 56 | 48 |
| 176 | 111 | 65 | 258 | 150 | 108 | 524 | 345 | 179 | 389 | 228 | 161 |
| 146 | 69 | 77 | 223 | 78 | 145 | 319 | 111 | 208 | 258 | 145 | 113 |
| 115 | 59 | 56 | 131 | 55 | 76 | 276 | 117 | 159 | 244 | 141 | 103 |
| 203 | 100 | 103 | 197 | 106 | 91 | 431 | 245 | 186 | 430 | 252 | 178 |
| 178 | 96 | 82 | 155 | 81 | 74 | 397 | 218 | 179 | 414 | 229 | 185 |
| 229 | 116 | 113 | 197 | 107 | 90 | 441 | 242 | 199 | 406 | 224 | 182 |
| 157 | 77 | 80 | 155 | 90 | 65 | 387 | 224 | 163 | 300 | 160 | 140 |

| 町 丁 | 総 数 | | | 0 ~ 4 歳 | | | 5 ~ 9 歳 | | |
|-------|-------|-------|-------|---------|-----|-----|---------|-----|-----|
| | 総 数 | 男 | 女 | 総 数 | 男 | 女 | 総 数 | 男 | 女 |
| 平塚 1 | 3,623 | 1,842 | 1,781 | 225 | 114 | 111 | 230 | 121 | 109 |
| 2 | 3,646 | 1,797 | 1,849 | 322 | 146 | 176 | 220 | 106 | 114 |
| 3 | 2,580 | 1,295 | 1,285 | 174 | 92 | 82 | 161 | 90 | 71 |
| 旗の台 1 | 1,812 | 816 | 996 | 113 | 60 | 53 | 81 | 44 | 37 |
| 2 | 2,649 | 1,269 | 1,380 | 206 | 110 | 96 | 162 | 68 | 94 |
| 3 | 2,722 | 1,340 | 1,382 | 193 | 101 | 92 | 165 | 84 | 81 |
| 4 | 3,474 | 1,731 | 1,743 | 233 | 119 | 114 | 176 | 88 | 88 |
| 5 | 4,427 | 2,181 | 2,246 | 394 | 203 | 191 | 264 | 126 | 138 |
| 6 | 3,299 | 1,580 | 1,719 | 244 | 118 | 126 | 201 | 110 | 91 |
| 中延 1 | 2,305 | 1,257 | 1,048 | 166 | 80 | 86 | 142 | 78 | 64 |
| 2 | 3,408 | 1,685 | 1,723 | 275 | 127 | 148 | 202 | 103 | 99 |
| 3 | 2,279 | 1,133 | 1,146 | 157 | 74 | 83 | 155 | 82 | 73 |
| 4 | 3,987 | 1,988 | 1,999 | 288 | 151 | 137 | 206 | 108 | 98 |
| 5 | 3,649 | 1,800 | 1,849 | 290 | 128 | 162 | 214 | 99 | 115 |
| 6 | 2,778 | 1,386 | 1,392 | 225 | 128 | 97 | 167 | 97 | 70 |
| 西中延 1 | 2,483 | 1,294 | 1,189 | 175 | 90 | 85 | 163 | 88 | 75 |
| 2 | 3,437 | 1,734 | 1,703 | 241 | 128 | 113 | 219 | 119 | 100 |
| 3 | 2,615 | 1,308 | 1,307 | 179 | 91 | 88 | 179 | 87 | 92 |
| 東中延 1 | 2,466 | 1,252 | 1,214 | 166 | 89 | 77 | 135 | 75 | 60 |
| 2 | 2,176 | 1,046 | 1,130 | 178 | 81 | 97 | 147 | 72 | 75 |
| 戸越 1 | 5,157 | 2,541 | 2,616 | 334 | 166 | 168 | 278 | 139 | 139 |
| 2 | 3,204 | 1,554 | 1,650 | 250 | 125 | 125 | 231 | 114 | 117 |
| 3 | 2,938 | 1,359 | 1,579 | 238 | 126 | 112 | 164 | 76 | 88 |
| 4 | 3,010 | 1,498 | 1,512 | 201 | 110 | 91 | 160 | 80 | 80 |
| 5 | 3,644 | 1,799 | 1,845 | 257 | 134 | 123 | 215 | 111 | 104 |
| 6 | 4,289 | 2,140 | 2,149 | 334 | 173 | 161 | 284 | 150 | 134 |
| 豊町 1 | 3,327 | 1,695 | 1,632 | 300 | 150 | 150 | 242 | 128 | 114 |
| 2 | 4,010 | 1,963 | 2,047 | 288 | 133 | 155 | 255 | 126 | 129 |
| 3 | 2,100 | 1,029 | 1,071 | 125 | 65 | 60 | 124 | 65 | 59 |
| 4 | 4,035 | 2,038 | 1,997 | 280 | 163 | 117 | 204 | 93 | 111 |
| 5 | 2,741 | 1,361 | 1,380 | 166 | 84 | 82 | 177 | 90 | 87 |
| 6 | 4,712 | 2,371 | 2,341 | 319 | 165 | 154 | 264 | 140 | 124 |
| 二葉 1 | 5,222 | 2,672 | 2,550 | 328 | 159 | 169 | 319 | 159 | 160 |
| 2 | 3,272 | 1,668 | 1,604 | 236 | 111 | 125 | 192 | 109 | 83 |
| 3 | 3,898 | 2,010 | 1,888 | 320 | 175 | 145 | 254 | 126 | 128 |
| 4 | 4,194 | 2,140 | 2,054 | 347 | 182 | 165 | 268 | 141 | 127 |

| 10 ~ 14 歳 | 15 ~ 19 歳 | | | 20 ~ 24 歳 | | | 25 ~ 29 歳 | | | | |
|-----------|-----------|-----|-----|-----------|-----|-----|-----------|-----|-----|-----|-----|
| | 総 数 | 男 | 女 | 総 数 | 男 | 女 | 総 数 | 男 | 女 | 総 数 | 男 |
| 179 | 102 | 77 | 218 | 129 | 89 | 536 | 268 | 268 | 474 | 294 | 180 |
| 176 | 90 | 86 | 186 | 95 | 91 | 494 | 253 | 241 | 489 | 269 | 220 |
| 159 | 71 | 88 | 183 | 95 | 88 | 325 | 170 | 155 | 276 | 159 | 117 |
| 103 | 58 | 45 | 159 | 51 | 108 | 333 | 131 | 202 | 207 | 90 | 117 |
| 126 | 61 | 65 | 170 | 80 | 90 | 353 | 181 | 172 | 299 | 167 | 132 |
| 134 | 72 | 62 | 201 | 94 | 107 | 452 | 213 | 239 | 303 | 165 | 138 |
| 150 | 90 | 60 | 232 | 115 | 117 | 556 | 279 | 277 | 429 | 242 | 187 |
| 209 | 119 | 90 | 249 | 150 | 99 | 594 | 248 | 346 | 530 | 296 | 234 |
| 195 | 113 | 82 | 178 | 82 | 96 | 337 | 150 | 187 | 356 | 178 | 178 |
| 119 | 66 | 53 | 127 | 71 | 56 | 363 | 229 | 134 | 311 | 192 | 119 |
| 165 | 91 | 74 | 201 | 108 | 93 | 398 | 209 | 189 | 412 | 208 | 204 |
| 110 | 55 | 55 | 121 | 51 | 70 | 331 | 166 | 165 | 280 | 163 | 117 |
| 197 | 97 | 100 | 271 | 141 | 130 | 569 | 271 | 298 | 516 | 288 | 228 |
| 181 | 96 | 85 | 210 | 103 | 107 | 522 | 274 | 248 | 453 | 239 | 214 |
| 115 | 52 | 63 | 168 | 80 | 88 | 426 | 195 | 231 | 353 | 192 | 161 |
| 158 | 81 | 77 | 151 | 83 | 68 | 314 | 184 | 130 | 292 | 177 | 115 |
| 198 | 112 | 86 | 216 | 112 | 104 | 409 | 233 | 176 | 362 | 191 | 171 |
| 155 | 77 | 78 | 153 | 83 | 70 | 344 | 193 | 151 | 291 | 165 | 126 |
| 150 | 82 | 68 | 164 | 80 | 84 | 342 | 180 | 162 | 295 | 170 | 125 |
| 108 | 51 | 57 | 128 | 58 | 70 | 265 | 136 | 129 | 259 | 128 | 131 |
| 249 | 125 | 124 | 315 | 155 | 160 | 802 | 401 | 401 | 651 | 355 | 296 |
| 164 | 81 | 83 | 171 | 89 | 82 | 444 | 202 | 242 | 375 | 196 | 179 |
| 144 | 65 | 79 | 235 | 85 | 150 | 430 | 179 | 251 | 353 | 180 | 173 |
| 153 | 63 | 90 | 192 | 99 | 93 | 415 | 207 | 208 | 396 | 221 | 175 |
| 213 | 113 | 100 | 234 | 107 | 127 | 482 | 235 | 247 | 429 | 232 | 197 |
| 211 | 106 | 105 | 237 | 124 | 113 | 554 | 270 | 284 | 510 | 268 | 242 |
| 173 | 84 | 89 | 154 | 82 | 72 | 423 | 233 | 190 | 403 | 228 | 175 |
| 212 | 111 | 101 | 256 | 129 | 127 | 569 | 294 | 275 | 424 | 233 | 191 |
| 110 | 58 | 52 | 120 | 62 | 58 | 303 | 139 | 164 | 247 | 128 | 119 |
| 215 | 111 | 104 | 252 | 138 | 114 | 616 | 312 | 304 | 487 | 300 | 187 |
| 146 | 70 | 76 | 183 | 103 | 80 | 427 | 203 | 224 | 332 | 185 | 147 |
| 267 | 129 | 138 | 295 | 163 | 132 | 679 | 353 | 326 | 568 | 308 | 260 |
| 265 | 120 | 145 | 388 | 244 | 144 | 719 | 435 | 284 | 548 | 307 | 241 |
| 178 | 85 | 93 | 200 | 97 | 103 | 446 | 232 | 214 | 398 | 247 | 151 |
| 220 | 125 | 95 | 263 | 144 | 119 | 509 | 279 | 230 | 444 | 253 | 191 |
| 237 | 124 | 113 | 259 | 126 | 133 | 555 | 299 | 256 | 475 | 263 | 212 |

| 町 丁 | 30 ~ 34 歳 | | | 35 ~ 39 歳 | | | 40 ~ 44 歳 | | |
|--------------|-----------|--------|--------|-----------|--------|--------|-----------|--------|--------|
| | 総 数 | 男 | 女 | 総 数 | 男 | 女 | 総 数 | 男 | 女 |
| 総 数 | 33,924 | 18,098 | 15,826 | 28,029 | 13,779 | 14,250 | 25,411 | 12,038 | 13,373 |
| 北品川 1 | 470 | 240 | 230 | 458 | 239 | 219 | 310 | 163 | 147 |
| 2 | 420 | 221 | 199 | 381 | 201 | 180 | 306 | 146 | 160 |
| 3 | 278 | 129 | 149 | 236 | 126 | 110 | 213 | 110 | 103 |
| 4 | 63 | 32 | 31 | 42 | 20 | 22 | 33 | 10 | 23 |
| 5 | 180 | 98 | 82 | 142 | 74 | 68 | 121 | 57 | 64 |
| 6 | 66 | 41 | 25 | 61 | 36 | 25 | 48 | 24 | 24 |
| 東品川 1 | 420 | 251 | 169 | 353 | 179 | 174 | 282 | 153 | 129 |
| 2 | 125 | 66 | 59 | 127 | 59 | 68 | 72 | 38 | 34 |
| 3 | 265 | 136 | 129 | 218 | 121 | 97 | 152 | 69 | 83 |
| 4 | 25 | 15 | 10 | 15 | 8 | 7 | 17 | 9 | 8 |
| 5 | 2 | 2 | — | 4 | 3 | 1 | 1 | — | 1 |
| 東品川 地先埋立地 | 22 | 13 | 9 | 25 | 18 | 7 | 7 | 5 | 2 |
| 南品川 1 | 155 | 95 | 60 | 127 | 63 | 64 | 119 | 52 | 67 |
| 2 | 244 | 143 | 101 | 198 | 95 | 103 | 196 | 97 | 99 |
| 3 | 157 | 84 | 73 | 139 | 77 | 62 | 95 | 48 | 47 |
| 4 | 413 | 224 | 189 | 354 | 161 | 193 | 275 | 127 | 148 |
| 5 | 558 | 328 | 230 | 409 | 206 | 203 | 362 | 183 | 179 |
| 6 | 308 | 163 | 145 | 245 | 116 | 129 | 210 | 96 | 114 |
| 西品川 1 | 496 | 286 | 210 | 410 | 223 | 187 | 374 | 172 | 202 |
| 2 | 432 | 240 | 192 | 361 | 181 | 180 | 317 | 159 | 158 |
| 3 | 372 | 201 | 171 | 249 | 119 | 130 | 263 | 120 | 143 |
| 広 町 1 | 11 | 8 | 3 | 4 | 2 | 2 | 3 | 1 | 2 |
| 2 | 86 | 28 | 58 | 238 | 67 | 171 | 452 | 212 | 240 |
| 上大崎 1 | 276 | 129 | 147 | 283 | 124 | 159 | 256 | 107 | 149 |
| 2 | 171 | 85 | 86 | 165 | 74 | 91 | 151 | 67 | 84 |
| 3 | 305 | 148 | 157 | 259 | 116 | 143 | 224 | 86 | 138 |
| 4 | 127 | 64 | 63 | 113 | 40 | 73 | 119 | 59 | 60 |
| 東五反田 1 | 181 | 96 | 85 | 128 | 56 | 72 | 136 | 61 | 75 |
| 2 | 104 | 48 | 56 | 89 | 38 | 51 | 87 | 40 | 47 |
| 3 | 132 | 70 | 62 | 118 | 51 | 67 | 99 | 45 | 54 |
| 4 | 132 | 61 | 71 | 105 | 51 | 54 | 105 | 42 | 63 |
| 5 | 195 | 92 | 103 | 174 | 63 | 111 | 172 | 79 | 93 |
| 西五反田 1 | 89 | 45 | 44 | 74 | 34 | 40 | 64 | 23 | 41 |
| 2 | 93 | 49 | 44 | 100 | 33 | 67 | 93 | 34 | 59 |
| 3 | 244 | 144 | 100 | 146 | 72 | 74 | 196 | 87 | 109 |
| 4 | 412 | 232 | 180 | 357 | 191 | 166 | 278 | 126 | 152 |
| 5 | 341 | 194 | 147 | 263 | 132 | 131 | 274 | 117 | 157 |
| 6 | 247 | 131 | 116 | 192 | 90 | 102 | 170 | 75 | 95 |
| 7 | 115 | 71 | 44 | 81 | 43 | 38 | 82 | 36 | 46 |
| 8 | 111 | 64 | 47 | 86 | 38 | 48 | 89 | 37 | 52 |
| 大 崎 1 | 104 | 67 | 37 | 74 | 39 | 35 | 67 | 36 | 31 |
| 2 | 182 | 99 | 83 | 164 | 71 | 93 | 108 | 61 | 47 |
| 3 | 286 | 161 | 125 | 206 | 100 | 106 | 182 | 79 | 103 |

| 総 数 | 45 ~ 49 歳 | | | 50 ~ 54 歳 | | | 55 ~ 59 歳 | | | 60 ~ 64 歳 | | |
|--------|-----------|--------|--------|-----------|--------|--------|-----------|-------|--------|-----------|-------|---|
| | 総 数 | 男 | 女 | 総 数 | 男 | 女 | 総 数 | 男 | 女 | 総 数 | 男 | 女 |
| 22,511 | 10,397 | 12,114 | 17,796 | 7,582 | 10,214 | 14,926 | 6,769 | 8,157 | 12,936 | 5,888 | 7,048 | |
| 244 | 122 | 122 | 209 | 77 | 132 | 186 | 77 | 109 | 181 | 77 | 104 | |
| 280 | 131 | 149 | 243 | 104 | 139 | 200 | 77 | 123 | 221 | 92 | 129 | |
| 164 | 84 | 80 | 91 | 51 | 40 | 76 | 35 | 41 | 49 | 22 | 27 | |
| 47 | 21 | 26 | 49 | 18 | 31 | 35 | 18 | 17 | 34 | 21 | 13 | |
| 134 | 56 | 78 | 126 | 55 | 71 | 86 | 41 | 45 | 68 | 30 | 38 | |
| 45 | 16 | 29 | 44 | 17 | 27 | 26 | 13 | 13 | 21 | 9 | 12 | |
| 250 | 112 | 138 | 222 | 90 | 132 | 192 | 81 | 111 | 170 | 84 | 86 | |
| 51 | 24 | 27 | 33 | 14 | 19 | 17 | 5 | 12 | 19 | 9 | 10 | |
| 142 | 68 | 74 | 101 | 49 | 52 | 86 | 40 | 46 | 59 | 28 | 31 | |
| 9 | 4 | 5 | 18 | 10 | 8 | 6 | 6 | — | 7 | 3 | 4 | |
| — | — | — | 1 | — | 1 | — | — | — | 1 | 1 | — | |
| 4 | 1 | 3 | 1 | — | 1 | 2 | 1 | 1 | 2 | — | 2 | |
| 128 | 58 | 70 | 97 | 41 | 56 | 101 | 45 | 56 | 87 | 41 | 46 | |
| 174 | 84 | 90 | 154 | 64 | 90 | 140 | 53 | 87 | 120 | 60 | 60 | |
| 94 | 35 | 59 | 81 | 32 | 49 | 67 | 35 | 32 | 67 | 26 | 41 | |
| 277 | 133 | 144 | 204 | 79 | 125 | 202 | 83 | 119 | 182 | 84 | 98 | |
| 324 | 152 | 172 | 299 | 113 | 186 | 278 | 127 | 151 | 276 | 128 | 148 | |
| 197 | 79 | 118 | 161 | 55 | 106 | 132 | 59 | 73 | 102 | 49 | 53 | |
| 339 | 155 | 184 | 284 | 129 | 155 | 222 | 115 | 107 | 151 | 71 | 80 | |
| 286 | 138 | 148 | 250 | 111 | 139 | 195 | 86 | 109 | 165 | 84 | 81 | |
| 236 | 111 | 125 | 190 | 94 | 96 | 153 | 73 | 80 | 160 | 83 | 77 | |
| 5 | 3 | 2 | 16 | 5 | 11 | 9 | 6 | 3 | 5 | 2 | 3 | |
| 423 | 262 | 161 | 148 | 108 | 40 | 20 | 16 | 4 | 8 | — | 8 | |
| 262 | 134 | 128 | 152 | 70 | 82 | 123 | 59 | 64 | 103 | 38 | 65 | |
| 163 | 78 | 85 | 110 | 42 | 68 | 90 | 36 | 54 | 73 | 32 | 41 | |
| 213 | 97 | 116 | 156 | 63 | 93 | 120 | 47 | 73 | 83 | 38 | 45 | |
| 107 | 47 | 60 | 59 | 34 | 25 | 52 | 21 | 31 | 44 | 21 | 23 | |
| 103 | 42 | 61 | 124 | 51 | 73 | 83 | 27 | 56 | 69 | 28 | 41 | |
| 86 | 37 | 49 | 72 | 28 | 44 | 66 | 29 | 37 | 50 | 25 | 25 | |
| 121 | 50 | 71 | 105 | 39 | 66 | 104 | 44 | 60 | 77 | 42 | 35 | |
| 90 | 42 | 48 | 79 | 32 | 47 | 59 | 22 | 37 | 55 | 27 | 28 | |
| 175 | 67 | 108 | 144 | 67 | 77 | 94 | 42 | 52 | 89 | 39 | 50 | |
| 75 | 33 | 42 | 64 | 22 | 42 | 56 | 24 | 32 | 58 | 24 | 34 | |
| 90 | 35 | 55 | 74 | 24 | 50 | 55 | 19 | 36 | 62 | 13 | 49 | |
| 194 | 107 | 87 | 107 | 69 | 38 | 48 | 23 | 25 | 41 | 15 | 26 | |
| 266 | 127 | 139 | 194 | 101 | 93 | 175 | 85 | 90 | 144 | 58 | 86 | |
| 258 | 116 | 142 | 199 | 86 | 113 | 186 | 84 | 102 | 170 | 83 | 87 | |
| 151 | 67 | 84 | 119 | 54 | 65 | 120 | 53 | 67 | 105 | 37 | 68 | |
| 80 | 39 | 41 | 70 | 25 | 45 | 59 | 23 | 36 | 32 | 13 | 19 | |
| 86 | 34 | 52 | 72 | 29 | 43 | 54 | 27 | 27 | 45 | 22 | 23 | |
| 57 | 25 | 32 | 40 | 22 | 18 | 38 | 15 | 23 | 41 | 21 | 20 | |
| 99 | 42 | 57 | 86 | 33 | 53 | 84 | 36 | 48 | 84 | 39 | 45 | |
| 194 | 90 | 104 | 152 | 55 | 97 | 138 | 61 | 77 | 106 | 63 | 43 | |

| 町 丁 | 30 ~ 34 歳 | | | 35 ~ 39 歳 | | | 40 ~ 44 歳 | | |
|-------|-----------|-----|-----|-----------|-----|-----|-----------|-----|-----|
| | 総 数 | 男 | 女 | 総 数 | 男 | 女 | 総 数 | 男 | 女 |
| 大 崎 4 | 314 | 162 | 152 | 226 | 106 | 120 | 192 | 84 | 108 |
| 5 | 79 | 58 | 21 | 45 | 27 | 18 | 30 | 19 | 11 |
| 東大井 1 | 257 | 142 | 115 | 215 | 109 | 106 | 176 | 88 | 88 |
| 2 | 390 | 214 | 176 | 337 | 173 | 164 | 274 | 135 | 139 |
| 3 | 493 | 241 | 252 | 401 | 205 | 196 | 301 | 150 | 151 |
| 4 | 207 | 93 | 114 | 203 | 116 | 87 | 117 | 60 | 57 |
| 5 | 269 | 145 | 124 | 216 | 100 | 116 | 196 | 88 | 108 |
| 6 | 177 | 95 | 82 | 159 | 73 | 86 | 171 | 80 | 91 |
| 南大井 1 | 191 | 105 | 86 | 183 | 93 | 90 | 145 | 74 | 71 |
| 2 | 57 | 28 | 29 | 36 | 20 | 16 | 28 | 14 | 14 |
| 3 | 240 | 142 | 98 | 210 | 84 | 126 | 170 | 82 | 88 |
| 4 | 282 | 150 | 132 | 209 | 116 | 93 | 171 | 86 | 85 |
| 5 | 401 | 206 | 195 | 327 | 161 | 166 | 298 | 145 | 153 |
| 6 | 549 | 261 | 288 | 506 | 279 | 227 | 410 | 202 | 208 |
| 勝 島 1 | 77 | 43 | 34 | 117 | 38 | 79 | 227 | 130 | 97 |
| 2 | 72 | 39 | 33 | 86 | 55 | 31 | 87 | 55 | 32 |
| 大 井 1 | 357 | 193 | 164 | 281 | 142 | 139 | 257 | 107 | 150 |
| 2 | 449 | 225 | 224 | 343 | 175 | 168 | 340 | 159 | 181 |
| 3 | 371 | 193 | 178 | 327 | 141 | 186 | 349 | 143 | 206 |
| 4 | 433 | 207 | 226 | 399 | 168 | 231 | 352 | 141 | 211 |
| 5 | 421 | 222 | 199 | 339 | 160 | 179 | 294 | 135 | 159 |
| 6 | 350 | 182 | 168 | 285 | 132 | 153 | 253 | 137 | 116 |
| 7 | 351 | 181 | 170 | 277 | 137 | 140 | 218 | 105 | 113 |
| 西大井 1 | 248 | 128 | 120 | 169 | 89 | 80 | 176 | 80 | 96 |
| 2 | 408 | 206 | 202 | 334 | 163 | 171 | 344 | 159 | 185 |
| 3 | 227 | 123 | 104 | 163 | 92 | 71 | 127 | 57 | 70 |
| 4 | 322 | 178 | 144 | 280 | 148 | 132 | 232 | 110 | 122 |
| 5 | 556 | 298 | 258 | 380 | 187 | 193 | 385 | 198 | 187 |
| 6 | 307 | 164 | 143 | 266 | 130 | 136 | 234 | 107 | 127 |
| 小山台 1 | 533 | 298 | 235 | 414 | 205 | 209 | 387 | 186 | 201 |
| 2 | 246 | 118 | 128 | 209 | 101 | 108 | 191 | 108 | 83 |
| 小 山 1 | 155 | 79 | 76 | 150 | 78 | 72 | 101 | 57 | 44 |
| 2 | 365 | 202 | 163 | 285 | 145 | 140 | 285 | 141 | 144 |
| 3 | 279 | 145 | 134 | 232 | 107 | 125 | 197 | 85 | 112 |
| 4 | 263 | 145 | 118 | 246 | 120 | 126 | 194 | 88 | 106 |
| 5 | 315 | 174 | 141 | 258 | 132 | 126 | 211 | 93 | 118 |
| 6 | 428 | 228 | 200 | 325 | 137 | 188 | 315 | 164 | 151 |
| 7 | 86 | 34 | 52 | 67 | 32 | 35 | 83 | 33 | 50 |
| 荏 原 1 | 314 | 175 | 139 | 231 | 125 | 106 | 229 | 113 | 116 |
| 2 | 211 | 120 | 91 | 159 | 79 | 80 | 183 | 85 | 98 |
| 3 | 173 | 88 | 85 | 148 | 75 | 73 | 143 | 63 | 80 |
| 4 | 333 | 179 | 154 | 319 | 170 | 149 | 253 | 117 | 136 |
| 5 | 354 | 183 | 171 | 259 | 139 | 120 | 199 | 89 | 110 |
| 6 | 338 | 179 | 159 | 273 | 132 | 141 | 258 | 126 | 132 |
| 7 | 242 | 129 | 113 | 221 | 112 | 109 | 169 | 87 | 82 |

| 45 ~ 49 歳 | | | 50 ~ 54 歳 | | | 55 ~ 59 歳 | | | 60 ~ 64 歳 | | |
|-----------|-----|-----|-----------|-----|-----|-----------|-----|-----|-----------|-----|-----|
| 総 数 | 男 | 女 | 総 数 | 男 | 女 | 総 数 | 男 | 女 | 総 数 | 男 | 女 |
| 187 | 86 | 101 | 135 | 49 | 86 | 120 | 60 | 60 | 92 | 32 | 60 |
| 17 | 6 | 11 | 20 | 3 | 17 | 13 | 7 | 6 | 21 | 13 | 8 |
| 123 | 65 | 58 | 114 | 46 | 68 | 126 | 48 | 78 | 114 | 52 | 62 |
| 241 | 125 | 116 | 198 | 81 | 117 | 199 | 78 | 121 | 189 | 87 | 102 |
| 280 | 139 | 141 | 237 | 93 | 144 | 205 | 77 | 128 | 233 | 101 | 132 |
| 85 | 51 | 34 | 55 | 13 | 42 | 60 | 21 | 39 | 37 | 18 | 19 |
| 169 | 72 | 97 | 180 | 67 | 113 | 155 | 69 | 86 | 134 | 64 | 70 |
| 157 | 59 | 98 | 116 | 45 | 71 | 108 | 45 | 63 | 79 | 38 | 41 |
| 126 | 55 | 71 | 106 | 45 | 61 | 124 | 60 | 64 | 88 | 38 | 50 |
| 31 | 11 | 20 | 24 | 10 | 14 | 26 | 11 | 15 | 25 | 9 | 16 |
| 157 | 54 | 103 | 138 | 43 | 95 | 121 | 41 | 80 | 89 | 37 | 52 |
| 124 | 61 | 63 | 111 | 48 | 63 | 88 | 29 | 59 | 122 | 62 | 60 |
| 237 | 112 | 125 | 201 | 88 | 113 | 172 | 79 | 93 | 146 | 72 | 74 |
| 288 | 135 | 153 | 200 | 88 | 112 | 142 | 79 | 63 | 101 | 44 | 57 |
| 156 | 93 | 63 | 46 | 34 | 12 | 22 | 12 | 10 | 11 | 4 | 7 |
| 59 | 36 | 23 | 32 | 20 | 12 | 35 | 22 | 13 | 13 | 11 | 2 |
| 220 | 102 | 118 | 225 | 78 | 147 | 177 | 67 | 110 | 181 | 83 | 98 |
| 262 | 117 | 145 | 273 | 103 | 170 | 233 | 113 | 120 | 155 | 67 | 88 |
| 320 | 150 | 170 | 252 | 106 | 146 | 157 | 63 | 94 | 174 | 78 | 96 |
| 321 | 122 | 199 | 242 | 104 | 138 | 193 | 94 | 99 | 170 | 75 | 95 |
| 217 | 99 | 118 | 197 | 79 | 118 | 181 | 88 | 93 | 166 | 68 | 98 |
| 125 | 67 | 58 | 98 | 36 | 62 | 76 | 28 | 48 | 85 | 39 | 46 |
| 204 | 90 | 114 | 168 | 72 | 96 | 141 | 56 | 85 | 134 | 57 | 77 |
| 185 | 86 | 99 | 132 | 58 | 74 | 112 | 64 | 48 | 71 | 28 | 43 |
| 302 | 148 | 154 | 194 | 92 | 102 | 181 | 73 | 108 | 163 | 78 | 85 |
| 134 | 52 | 82 | 118 | 40 | 78 | 107 | 48 | 59 | 97 | 48 | 49 |
| 223 | 109 | 114 | 179 | 69 | 110 | 153 | 74 | 79 | 141 | 67 | 74 |
| 294 | 135 | 159 | 227 | 103 | 124 | 176 | 81 | 95 | 165 | 78 | 87 |
| 212 | 102 | 110 | 193 | 81 | 112 | 140 | 73 | 67 | 113 | 56 | 57 |
| 313 | 140 | 173 | 295 | 134 | 161 | 209 | 97 | 112 | 209 | 91 | 118 |
| 152 | 70 | 82 | 87 | 55 | 32 | 65 | 31 | 34 | 43 | 14 | 29 |
| 85 | 37 | 48 | 73 | 31 | 42 | 67 | 28 | 39 | 50 | 21 | 29 |
| 259 | 121 | 138 | 200 | 85 | 115 | 178 | 88 | 90 | 135 | 67 | 68 |
| 150 | 70 | 80 | 170 | 60 | 110 | 149 | 72 | 77 | 106 | 48 | 58 |
| 173 | 70 | 103 | 152 | 72 | 80 | 127 | 60 | 67 | 131 | 50 | 81 |
| 212 | 92 | 120 | 156 | 61 | 95 | 140 | 71 | 69 | 102 | 48 | 54 |
| 279 | 116 | 163 | 248 | 101 | 147 | 220 | 100 | 120 | 184 | 75 | 109 |
| 72 | 28 | 44 | 65 | 34 | 31 | 50 | 23 | 27 | 48 | 23 | 25 |
| 205 | 93 | 112 | 141 | 72 | 69 | 127 | 62 | 65 | 111 | 46 | 65 |
| 156 | 82 | 74 | 124 | 54 | 70 | 88 | 51 | 37 | 84 | 35 | 49 |
| 112 | 57 | 55 | 93 | 38 | 55 | 96 | 49 | 47 | 69 | 32 | 37 |
| 214 | 100 | 114 | 155 | 57 | 98 | 149 | 67 | 82 | 120 | 62 | 58 |
| 185 | 84 | 101 | 165 | 79 | 86 | 106 | 50 | 56 | 99 | 51 | 48 |
| 212 | 106 | 106 | 159 | 73 | 86 | 129 | 67 | 62 | 108 | 50 | 58 |
| 184 | 70 | 114 | 143 | 66 | 77 | 139 | 68 | 71 | 103 | 58 | 45 |

| 町 丁 | 30 ~ 34 歳 | | | 35 ~ 39 歳 | | | 40 ~ 44 歳 | | |
|-------|-----------|-----|-----|-----------|-----|-----|-----------|-----|-----|
| | 総 数 | 男 | 女 | 総 数 | 男 | 女 | 総 数 | 男 | 女 |
| 平 塚 1 | 306 | 153 | 153 | 278 | 137 | 141 | 242 | 104 | 138 |
| 2 | 418 | 232 | 186 | 273 | 114 | 159 | 235 | 109 | 126 |
| 3 | 236 | 122 | 114 | 209 | 104 | 105 | 199 | 92 | 107 |
| 旗の台 1 | 159 | 91 | 68 | 118 | 49 | 69 | 93 | 44 | 49 |
| 2 | 244 | 114 | 130 | 210 | 96 | 114 | 189 | 80 | 109 |
| 3 | 246 | 150 | 96 | 213 | 97 | 116 | 178 | 86 | 92 |
| 4 | 318 | 182 | 136 | 248 | 123 | 125 | 234 | 115 | 119 |
| 5 | 490 | 247 | 243 | 357 | 207 | 150 | 277 | 131 | 146 |
| 6 | 268 | 118 | 150 | 265 | 130 | 135 | 235 | 99 | 136 |
| 中 延 1 | 213 | 124 | 89 | 158 | 84 | 74 | 152 | 76 | 76 |
| 2 | 339 | 183 | 156 | 245 | 111 | 134 | 251 | 125 | 126 |
| 3 | 212 | 109 | 103 | 170 | 97 | 73 | 144 | 64 | 80 |
| 4 | 382 | 217 | 165 | 289 | 139 | 150 | 261 | 124 | 137 |
| 5 | 353 | 191 | 162 | 254 | 127 | 127 | 257 | 124 | 133 |
| 6 | 284 | 154 | 130 | 182 | 105 | 77 | 174 | 74 | 100 |
| 西中延 1 | 211 | 113 | 98 | 207 | 106 | 101 | 196 | 96 | 100 |
| 2 | 286 | 151 | 135 | 273 | 134 | 139 | 257 | 118 | 139 |
| 3 | 238 | 128 | 110 | 183 | 83 | 100 | 195 | 97 | 98 |
| 東中延 1 | 213 | 119 | 94 | 162 | 87 | 75 | 192 | 74 | 118 |
| 2 | 211 | 111 | 100 | 179 | 94 | 85 | 124 | 63 | 61 |
| 戸 越 1 | 478 | 242 | 236 | 365 | 196 | 169 | 338 | 156 | 182 |
| 2 | 328 | 173 | 155 | 276 | 134 | 142 | 225 | 111 | 114 |
| 3 | 278 | 158 | 120 | 206 | 95 | 111 | 188 | 84 | 104 |
| 4 | 267 | 150 | 117 | 185 | 90 | 95 | 224 | 110 | 114 |
| 5 | 358 | 195 | 163 | 280 | 133 | 147 | 255 | 133 | 122 |
| 6 | 405 | 219 | 186 | 320 | 146 | 174 | 321 | 160 | 161 |
| 豊 町 1 | 313 | 159 | 154 | 270 | 135 | 135 | 217 | 114 | 103 |
| 2 | 346 | 190 | 156 | 312 | 159 | 153 | 312 | 149 | 163 |
| 3 | 195 | 113 | 82 | 148 | 63 | 85 | 146 | 74 | 72 |
| 4 | 359 | 185 | 174 | 280 | 141 | 139 | 263 | 115 | 148 |
| 5 | 224 | 125 | 99 | 195 | 93 | 102 | 195 | 90 | 105 |
| 6 | 390 | 205 | 185 | 342 | 176 | 166 | 322 | 154 | 168 |
| 二 葉 1 | 424 | 225 | 199 | 413 | 198 | 215 | 390 | 190 | 200 |
| 2 | 301 | 161 | 140 | 250 | 131 | 119 | 245 | 117 | 128 |
| 3 | 341 | 183 | 158 | 289 | 147 | 142 | 256 | 119 | 137 |
| 4 | 385 | 212 | 173 | 337 | 160 | 177 | 297 | 154 | 143 |

| 町 丁 | 45 ~ 49 歳 | | | 50 ~ 54 歳 | | | 55 ~ 59 歳 | | | 60 ~ 64 歳 | | |
|-------|-----------|-----|-----|-----------|-----|-----|-----------|-----|-----|-----------|----|-----|
| | 総 数 | 男 | 女 | 総 数 | 男 | 女 | 総 数 | 男 | 女 | 総 数 | 男 | 女 |
| 平 塚 1 | 236 | 112 | 124 | 184 | 79 | 105 | 145 | 64 | 81 | 133 | 61 | 72 |
| 2 | 203 | 95 | 108 | 170 | 83 | 87 | 118 | 53 | 65 | 117 | 47 | 70 |
| 3 | 155 | 84 | 71 | 116 | 39 | 77 | 115 | 54 | 61 | 77 | 33 | 44 |
| 旗の台 1 | 114 | 44 | 70 | 105 | 44 | 61 | 69 | 30 | 39 | 52 | 33 | 19 |
| 2 | 183 | 87 | 96 | 136 | 55 | 81 | 96 | 43 | 53 | 89 | 45 | 44 |
| 3 | 157 | 76 | 81 | 105 | 38 | 67 | 85 | 36 | 49 | 94 | 40 | 54 |
| 4 | 203 | 84 | 119 | 182 | 76 | 106 | 153 | 72 | 81 | 125 | 55 | 70 |
| 5 | 229 | 96 | 133 | 159 | 61 | 98 | 189 | 65 | 124 | 186 | 85 | 101 |
| 6 | 241 | 117 | 124 | 170 | 80 | 90 | 143 | 66 | 77 | 139 | 62 | 77 |
| 中 延 1 | 124 | 58 | 66 | 103 | 46 | 57 | 82 | 38 | 44 | 81 | 32 | 49 |
| 2 | 214 | 111 | 103 | 166 | 69 | 97 | 140 | 61 | 79 | 134 | 57 | 77 |
| 3 | 140 | 60 | 80 | 110 | 51 | 59 | 98 | 47 | 51 | 71 | 31 | 40 |
| 4 | 238 | 96 | 142 | 206 | 85 | 121 | 165 | 84 | 81 | 152 | 74 | 78 |
| 5 | 206 | 98 | 108 | 167 | 67 | 100 | 168 | 78 | 90 | 124 | 62 | 62 |
| 6 | 151 | 70 | 81 | 130 | 49 | 81 | 128 | 62 | 66 | 95 | 44 | 51 |
| 西中延 1 | 154 | 72 | 82 | 115 | 42 | 73 | 98 | 44 | 54 | 82 | 43 | 39 |
| 2 | 232 | 112 | 120 | 153 | 70 | 83 | 145 | 58 | 87 | 153 | 61 | 92 |
| 3 | 185 | 84 | 101 | 126 | 49 | 77 | 98 | 44 | 54 | 95 | 42 | 53 |
| 東中延 1 | 153 | 74 | 79 | 110 | 46 | 64 | 106 | 43 | 63 | 89 | 47 | 42 |
| 2 | 122 | 44 | 78 | 95 | 44 | 51 | 91 | 46 | 45 | 84 | 32 | 52 |
| 戸 越 1 | 344 | 154 | 190 | 253 | 121 | 132 | 233 | 101 | 132 | 190 | 87 | 103 |
| 2 | 190 | 85 | 105 | 138 | 67 | 71 | 120 | 57 | 63 | 96 | 34 | 62 |
| 3 | 185 | 86 | 99 | 133 | 50 | 83 | 120 | 60 | 60 | 81 | 40 | 41 |
| 4 | 185 | 83 | 102 | 158 | 70 | 88 | 120 | 57 | 63 | 124 | 54 | 70 |
| 5 | 209 | 96 | 113 | 170 | 64 | 106 | 164 | 78 | 86 | 131 | 55 | 76 |
| 6 | 255 | 123 | 132 | 195 | 81 | 114 | 167 | 76 | 91 | 165 | 77 | 88 |
| 豊 町 1 | 184 | 79 | 105 | 129 | 60 | 69 | 121 | 64 | 57 | 122 | 57 | 65 |
| 2 | 277 | 115 | 162 | 199 | 87 | 112 | 147 | 67 | 80 | 126 | 50 | 76 |
| 3 | 133 | 54 | 79 | 107 | 51 | 56 | 100 | 48 | 52 | 92 | 42 | 50 |
| 4 | 243 | 103 | 140 | 232 | 102 | 130 | 174 | 86 | 88 | 138 | 54 | 84 |
| 5 | 183 | 87 | 96 | 142 | 65 | 77 | 109 | 49 | 60 | 79 | 36 | 43 |
| 6 | 323 | 153 | 170 | 264 | 116 | 148 | 203 | 96 | 107 | 158 | 82 | 76 |
| 二 葉 1 | 337 | 154 | 183 | 244 | 102 | 142 | 229 | 97 | 132 | 186 | 94 | 92 |
| 2 | 185 | 88 | 97 | 165 | 57 | 108 | 141 | 79 | 62 | 93 | 45 | 48 |
| 3 | 250 | 113 | 137 | 197 | 92 | 105 | 164 | 72 | 92 | 144 | 72 | 72 |
| 4 | 246 | 117 | 129 | 225 | 96 | 129 | 165 | 81 | 84 | 142 | 66 | 76 |

| 町 丁 | 65 ~ 69 歳 | | | 70 ~ 74 歳 | | | 75 ~ 79 歳 | | |
|--------------|-----------|-------|-------|-----------|-------|-------|-----------|-------|-------|
| | 総 数 | 男 | 女 | 総 数 | 男 | 女 | 総 数 | 男 | 女 |
| 総 数 | 10,122 | 4,664 | 5,458 | 7,954 | 3,547 | 4,407 | 4,666 | 2,061 | 2,605 |
| 北品川 1 | 149 | 75 | 74 | 102 | 47 | 55 | 49 | 30 | 19 |
| 2 | 151 | 62 | 89 | 118 | 54 | 64 | 73 | 25 | 48 |
| 3 | 57 | 25 | 32 | 32 | 13 | 19 | 22 | 10 | 12 |
| 4 | 18 | 7 | 11 | 21 | 8 | 13 | 4 | 3 | 1 |
| 5 | 50 | 19 | 31 | 64 | 27 | 37 | 32 | 19 | 13 |
| 6 | 17 | 8 | 9 | 23 | 9 | 14 | 8 | 5 | 3 |
| 東品川 1 | 154 | 68 | 86 | 92 | 38 | 54 | 59 | 24 | 35 |
| 2 | 31 | 11 | 20 | 20 | 10 | 10 | 11 | 6 | 5 |
| 3 | 45 | 22 | 23 | 40 | 20 | 20 | 19 | 10 | 9 |
| 4 | 3 | 2 | 1 | 3 | 1 | 2 | 4 | 1 | 3 |
| 5 | — | — | — | — | — | — | — | — | — |
| 東品川 地先埋立地 | — | — | — | — | — | — | — | — | — |
| 南品川 1 | 50 | 21 | 29 | 45 | 20 | 25 | 34 | 17 | 17 |
| 2 | 120 | 62 | 58 | 66 | 30 | 36 | 41 | 18 | 23 |
| 3 | 52 | 28 | 24 | 32 | 14 | 18 | 19 | 8 | 11 |
| 4 | 159 | 65 | 94 | 125 | 57 | 68 | 59 | 29 | 30 |
| 5 | 213 | 106 | 107 | 142 | 73 | 69 | 71 | 33 | 38 |
| 6 | 91 | 47 | 44 | 62 | 25 | 37 | 42 | 20 | 22 |
| 西品川 1 | 127 | 50 | 77 | 90 | 44 | 46 | 54 | 25 | 29 |
| 2 | 169 | 69 | 100 | 147 | 65 | 82 | 68 | 31 | 37 |
| 3 | 101 | 45 | 56 | 96 | 39 | 57 | 64 | 34 | 30 |
| 広 町 1 | 6 | 4 | 2 | 2 | 2 | — | 1 | — | 1 |
| 2 | 18 | 3 | 15 | 17 | 4 | 13 | 19 | 3 | 16 |
| 上大崎 1 | 89 | 45 | 44 | 98 | 34 | 64 | 57 | 31 | 26 |
| 2 | 72 | 37 | 35 | 56 | 23 | 33 | 30 | 12 | 18 |
| 3 | 72 | 29 | 43 | 60 | 25 | 35 | 47 | 20 | 27 |
| 4 | 28 | 13 | 15 | 28 | 11 | 17 | 25 | 8 | 17 |
| 東五反田 1 | 59 | 27 | 32 | 46 | 24 | 22 | 33 | 9 | 24 |
| 2 | 25 | 14 | 11 | 30 | 10 | 20 | 19 | 6 | 13 |
| 3 | 54 | 27 | 27 | 40 | 21 | 19 | 39 | 17 | 22 |
| 4 | 31 | 15 | 16 | 23 | 8 | 15 | 14 | 5 | 9 |
| 5 | 53 | 29 | 24 | 52 | 21 | 31 | 33 | 10 | 23 |
| 西五反田 1 | 34 | 17 | 17 | 29 | 9 | 20 | 23 | 12 | 11 |
| 2 | 53 | 17 | 36 | 40 | 15 | 25 | 18 | 4 | 14 |
| 3 | 32 | 13 | 19 | 27 | 9 | 18 | 13 | 8 | 5 |
| 4 | 114 | 57 | 57 | 105 | 42 | 63 | 54 | 29 | 25 |
| 5 | 105 | 51 | 54 | 71 | 31 | 40 | 44 | 16 | 28 |
| 6 | 77 | 41 | 36 | 46 | 20 | 26 | 29 | 13 | 16 |
| 7 | 35 | 19 | 16 | 35 | 18 | 17 | 18 | 8 | 10 |
| 8 | 40 | 20 | 20 | 33 | 19 | 14 | 14 | 6 | 8 |
| 大 崎 1 | 22 | 12 | 10 | 14 | 9 | 5 | 6 | 3 | 3 |
| 2 | 57 | 27 | 30 | 36 | 18 | 18 | 19 | 9 | 10 |
| 3 | 84 | 40 | 44 | 65 | 24 | 41 | 50 | 21 | 29 |

| 町 丁 | 80 ~ 84 歳 | | | 85 ~ 89 歳 | | | 90 ~ 94 歳 | | | 95 ~ 99 歳 | | | 100歳以上 | | |
|--------|-----------|-----|-------|-----------|-----|-----|-----------|----|-----|-----------|---|----|--------|---|---|
| | 総 数 | 男 | 女 | 総 数 | 男 | 女 | 総 数 | 男 | 女 | 総 数 | 男 | 女 | 総 数 | 男 | 女 |
| 総 数 | 1,968 | 822 | 1,146 | 632 | 215 | 417 | 138 | 32 | 106 | 14 | 2 | 12 | 1 | — | 1 |
| 北品川 1 | 24 | 9 | 15 | 3 | 1 | 2 | — | — | — | — | — | — | — | — | — |
| 2 | 31 | 14 | 17 | 7 | 6 | 1 | — | — | — | — | — | — | — | — | — |
| 3 | 12 | 5 | 7 | 5 | — | 5 | — | — | — | — | — | — | — | — | — |
| 4 | 9 | 4 | 5 | 1 | — | 1 | — | — | — | — | — | — | — | — | — |
| 5 | 12 | 4 | 8 | 5 | 2 | 3 | 1 | 1 | — | — | — | — | — | — | — |
| 6 | 3 | 1 | 2 | — | — | — | — | — | — | — | — | — | — | — | — |
| 東品川 1 | 20 | 7 | 13 | 12 | 4 | 8 | 2 | 2 | — | — | — | — | — | — | — |
| 2 | 3 | 1 | 2 | 3 | 1 | 2 | — | — | — | — | — | — | — | — | — |
| 3 | 9 | 4 | 5 | 4 | — | 4 | — | — | — | — | — | — | — | — | — |
| 4 | — | — | — | — | — | — | — | — | — | — | — | — | — | — | — |
| 5 | — | — | — | — | — | — | — | — | — | — | — | — | — | — | — |
| 南品川 1 | 14 | 6 | 8 | 7 | 3 | 4 | — | — | — | 1 | — | 1 | — | — | — |
| 2 | 17 | 6 | 11 | 9 | 3 | 6 | 2 | 1 | 1 | — | — | — | — | — | — |
| 3 | 11 | 6 | 5 | 4 | 1 | 3 | 1 | — | 1 | — | — | — | — | — | — |
| 4 | 31 | 10 | 21 | 10 | 5 | 5 | — | — | — | — | — | — | — | — | — |
| 5 | 31 | 14 | 17 | 18 | 8 | 10 | 3 | 1 | 2 | — | — | — | — | — | — |
| 6 | 13 | 4 | 9 | 6 | 2 | 4 | 3 | 1 | 2 | — | — | — | — | — | — |
| 西品川 1 | 33 | 8 | 25 | 7 | 1 | 6 | 1 | — | 1 | — | — | — | — | — | — |
| 2 | 29 | 14 | 15 | 11 | 4 | 7 | 4 | 1 | 3 | — | — | — | — | — | — |
| 3 | 21 | 4 | 17 | 12 | 6 | 6 | 2 | — | 2 | — | — | — | — | — | — |
| 広 町 1 | — | — | — | 1 | — | 1 | — | — | — | — | — | — | — | — | — |
| 2 | 8 | 1 | 7 | 3 | — | 3 | — | — | — | — | — | — | — | — | — |
| 上大崎 1 | 20 | 4 | 16 | 6 | 4 | 2 | 2 | — | 2 | — | — | — | — | — | — |
| 2 | 12 | 6 | 6 | 13 | 7 | 6 | 1 | 1 | — | — | — | — | — | — | — |
| 3 | 23 | 13 | 10 | 6 | 4 | 2 | 4 | — | 4 | — | — | — | — | — | — |
| 4 | 5 | 1 | 4 | 2 | 1 | 1 | 1 | — | 1 | — | — | — | — | — | — |
| 東五反田 1 | 11 | 4 | 7 | 11 | 2 | 9 | 1 | 1 | — | — | — | — | — | — | — |
| 2 | 6 | 2 | 4 | — | — | — | — | — | — | — | — | — | — | — | — |
| 3 | 17 | 6 | 11 | 4 | 2 | 2 | — | — | — | — | — | — | — | — | — |
| 4 | 8 | 1 | 7 | 1 | 1 | — | — | — | — | — | — | — | — | — | — |
| 5 | 28 | 11 | 17 | 8 | 4 | 4 | 3 | 1 | 2 | — | — | — | — | — | — |
| 西五反田 1 | 3 | 1 | 2 | 1 | 1 | — | — | — | — | — | — | — | — | — | — |
| 2 | 7 | — | 7 | 4 | 3 | 1 | 2 | 2 | — | — | — | — | — | — | — |
| 3 | 10 | 4 | 6 | 1 | — | 1 | — | — | — | — | — | — | — | — | — |
| 4 | 23 | 11 | 12 | 9 | 2 | 7 | 1 | 1 | — | — | — | — | — | — | — |
| 5 | 26 | 12 | 14 | 10 | 2 | 8 | 2 | — | 2 | — | — | — | — | — | — |
| 6 | 12 | 7 | 5 | 7 | 2 | 5 | — | — | — | — | — | — | — | — | — |
| 7 | 4 | 2 | 2 | 1 | — | 1 | 1 | 1 | — | — | — | — | — | — | — |
| 8 | 5 | 1 | 4 | 1 | 1 | — | — | — | — | — | — | — | — | — | — |
| 大 崎 1 | 3 | 2 | 1 | — | — | — | — | — | — | — | — | — | — | — | — |
| 2 | 4 | 1 | 3 | 1 | — | 1 | 1 | — | 1 | — | — | — | — | — | — |
| 3 | 23 | 8 | 15 | 7 | 4 | 3 | 1 | — | 1 | — | — | — | — | — | — |

| 町 丁 | 65 ~ 69 歳 | | | 70 ~ 74 歳 | | | 75 ~ 79 歳 | | |
|-------|-----------|----|----|-----------|----|----|-----------|----|----|
| | 総 数 | 男 | 女 | 総 数 | 男 | 女 | 総 数 | 男 | 女 |
| 大 崎 4 | 85 | 42 | 43 | 88 | 34 | 54 | 44 | 21 | 23 |
| 5 | 16 | 10 | 6 | 11 | 6 | 5 | 5 | 1 | 4 |
| 東大井 1 | 86 | 48 | 38 | 66 | 36 | 30 | 22 | 13 | 9 |
| 2 | 134 | 62 | 72 | 91 | 45 | 46 | 51 | 21 | 30 |
| 3 | 158 | 76 | 82 | 110 | 54 | 56 | 90 | 47 | 43 |
| 4 | 37 | 13 | 24 | 27 | 15 | 12 | 18 | 7 | 11 |
| 5 | 96 | 49 | 47 | 76 | 32 | 44 | 44 | 16 | 28 |
| 6 | 69 | 29 | 40 | 53 | 24 | 29 | 43 | 22 | 21 |
| 南大井 1 | 67 | 38 | 29 | 38 | 17 | 21 | 32 | 17 | 15 |
| 2 | 16 | 11 | 5 | 14 | 6 | 8 | 8 | 3 | 5 |
| 3 | 65 | 27 | 38 | 50 | 18 | 32 | 33 | 14 | 19 |
| 4 | 89 | 41 | 48 | 61 | 31 | 30 | 30 | 14 | 16 |
| 5 | 75 | 32 | 43 | 72 | 26 | 46 | 44 | 19 | 25 |
| 6 | 69 | 33 | 36 | 69 | 29 | 40 | 35 | 13 | 22 |
| 勝 島 1 | 13 | 6 | 7 | 12 | 1 | 11 | 7 | 2 | 5 |
| 2 | 16 | 14 | 2 | 4 | 3 | 1 | 3 | 2 | 1 |
| 大 井 1 | 131 | 58 | 73 | 87 | 38 | 49 | 59 | 23 | 36 |
| 2 | 137 | 61 | 76 | 125 | 55 | 70 | 66 | 26 | 40 |
| 3 | 100 | 36 | 64 | 78 | 37 | 41 | 62 | 27 | 35 |
| 4 | 114 | 59 | 55 | 118 | 50 | 68 | 71 | 29 | 42 |
| 5 | 119 | 56 | 63 | 84 | 40 | 44 | 64 | 31 | 33 |
| 6 | 74 | 32 | 42 | 43 | 19 | 24 | 33 | 15 | 18 |
| 7 | 90 | 40 | 50 | 86 | 30 | 56 | 49 | 20 | 29 |
| 西大井 1 | 61 | 27 | 34 | 65 | 29 | 36 | 28 | 12 | 16 |
| 2 | 147 | 60 | 87 | 110 | 54 | 56 | 52 | 24 | 28 |
| 3 | 60 | 33 | 27 | 46 | 14 | 32 | 27 | 15 | 12 |
| 4 | 107 | 57 | 50 | 87 | 35 | 52 | 45 | 18 | 27 |
| 5 | 131 | 44 | 87 | 89 | 52 | 37 | 55 | 22 | 33 |
| 6 | 74 | 36 | 38 | 61 | 29 | 32 | 42 | 21 | 21 |
| 小山台 1 | 143 | 72 | 71 | 133 | 55 | 78 | 57 | 23 | 34 |
| 2 | 61 | 29 | 32 | 37 | 19 | 18 | 12 | 5 | 7 |
| 小 山 1 | 44 | 19 | 25 | 37 | 17 | 20 | 19 | 8 | 11 |
| 2 | 103 | 49 | 54 | 83 | 32 | 51 | 59 | 29 | 30 |
| 3 | 107 | 49 | 58 | 71 | 29 | 42 | 35 | 13 | 22 |
| 4 | 87 | 42 | 45 | 80 | 40 | 40 | 44 | 19 | 25 |
| 5 | 70 | 27 | 43 | 71 | 29 | 42 | 31 | 8 | 23 |
| 6 | 144 | 69 | 75 | 105 | 48 | 47 | 67 | 35 | 32 |
| 7 | 32 | 24 | 8 | 29 | 9 | 20 | 24 | 5 | 19 |
| 荏 原 1 | 56 | 27 | 29 | 62 | 31 | 31 | 38 | 13 | 25 |
| 2 | 69 | 28 | 41 | 56 | 25 | 31 | 35 | 13 | 22 |
| 3 | 73 | 33 | 40 | 52 | 24 | 28 | 30 | 18 | 12 |
| 4 | 109 | 53 | 56 | 78 | 38 | 40 | 45 | 24 | 21 |
| 5 | 71 | 33 | 38 | 57 | 19 | 38 | 36 | 10 | 26 |
| 6 | 86 | 40 | 46 | 72 | 26 | 46 | 49 | 23 | 26 |
| 7 | 86 | 38 | 48 | 71 | 28 | 43 | 35 | 13 | 22 |

| 80 ~ 84 歳 | | | 85 ~ 89 歳 | | | 90 ~ 94 歳 | | | 95 ~ 99 歳 | | | 100 歳以上 | | |
|-----------|----|----|-----------|---|---|-----------|---|---|-----------|---|---|---------|---|---|
| 総 数 | 男 | 女 | 総 数 | 男 | 女 | 総 数 | 男 | 女 | 総 数 | 男 | 女 | 総 数 | 男 | 女 |
| 21 | 9 | 12 | 8 | 1 | 7 | 2 | — | 2 | — | — | — | — | — | — |
| — | — | — | — | — | — | — | — | — | — | — | — | — | — | — |
| 15 | 6 | 9 | 3 | 1 | 2 | — | — | — | 1 | — | — | — | — | — |
| 25 | 6 | 19 | 12 | 3 | 9 | 5 | 1 | 4 | — | — | — | — | — | — |
| 22 | 12 | 10 | 8 | 3 | 5 | — | — | — | — | — | — | — | — | — |
| 12 | 3 | 9 | 2 | 1 | 1 | 2 | — | 2 | — | — | — | — | — | — |
| 19 | 11 | 8 | 5 | 1 | 4 | 1 | 1 | — | — | — | — | — | — | — |
| 10 | 2 | 8 | 7 | 1 | 6 | — | — | — | — | — | — | — | — | — |
| 17 | 7 | 10 | 4 | 1 | 3 | 1 | — | 1 | — | — | — | — | — | — |
| — | — | — | 1 | — | 1 | — | — | — | — | — | — | — | — | — |
| 13 | 5 | 8 | 2 | 1 | 1 | 1 | 1 | — | — | — | — | — | — | — |
| 14 | 7 | 7 | 3 | 1 | 2 | 3 | — | 3 | — | — | — | — | — | — |
| 19 | 7 | 12 | 6 | 2 | 4 | — | — | — | — | — | — | — | — | — |
| 20 | 7 | 13 | 3 | 2 | 1 | — | — | — | — | — | — | — | — | — |
| 4 | — | 4 | — | — | — | — | — | — | — | — | — | — | — | — |
| 4 | — | 4 | — | — | — | — | — | — | — | — | — | — | — | — |
| 28 | 8 | 20 | 6 | 3 | 3 | 2 | — | 2 | — | — | — | — | — | — |
| 39 | 14 | 25 | 5 | 1 | 4 | 5 | — | 5 | — | — | — | — | — | — |
| 29 | 10 | 19 | 11 | 2 | 9 | 1 | — | 1 | — | — | — | — | — | — |
| 15 | 2 | 13 | 5 | — | 5 | 3 | — | 3 | 1 | — | 1 | — | — | — |
| 24 | 9 | 15 | 8 | 3 | 5 | 2 | — | 2 | — | — | — | — | — | — |
| 13 | 6 | 7 | 4 | 2 | 2 | — | — | — | 1 | — | 1 | — | — | — |
| 27 | 14 | 13 | 5 | 1 | 4 | 2 | — | 2 | — | — | — | — | — | — |
| 9 | 4 | 5 | — | — | — | — | — | — | — | — | — | — | — | — |
| 23 | 6 | 17 | 7 | 1 | 6 | 1 | — | 1 | 2 | — | 2 | — | — | — |
| 16 | 6 | 10 | 3 | — | 3 | 1 | — | 1 | — | — | — | — | — | — |
| 26 | 10 | 16 | 5 | 1 | 4 | 2 | 1 | 1 | 1 | — | 1 | — | — | — |
| 30 | 14 | 16 | 8 | 3 | 5 | 3 | — | 3 | — | — | — | — | — | — |
| 20 | 7 | 13 | 4 | — | 4 | 1 | — | 1 | — | — | — | — | — | — |
| 27 | 12 | 15 | 6 | 4 | 2 | 1 | — | 1 | — | — | — | — | — | — |
| 9 | 3 | 6 | 2 | 1 | 1 | 2 | — | 2 | — | — | — | — | — | — |
| 5 | 3 | 2 | 3 | — | 3 | 2 | — | 2 | — | — | — | — | — | — |
| 13 | 6 | 7 | 2 | 1 | 1 | — | — | — | — | — | — | — | — | — |
| 25 | 8 | 17 | 10 | 3 | 7 | 1 | 1 | — | 1 | — | 1 | — | — | — |
| 19 | 7 | 12 | 6 | 2 | 4 | 2 | — | 2 | — | — | — | — | — | — |
| 15 | 8 | 7 | 5 | 1 | 4 | — | — | — | — | — | — | — | — | — |
| 14 | 9 | 5 | 9 | 2 | 7 | 2 | — | 2 | 1 | — | 1 | — | — | — |
| 13 | 7 | 6 | 2 | 2 | — | — | — | — | — | — | — | — | — | — |
| 10 | 6 | 4 | 3 | 2 | 1 | — | — | — | — | — | — | — | — | — |
| 14 | 7 | 7 | 6 | 4 | 2 | — | — | — | — | — | — | — | — | — |
| 11 | 6 | 5 | 2 | — | 2 | — | — | — | — | — | — | — | — | — |
| 21 | 10 | 11 | 7 | 3 | 4 | 1 | — | 1 | — | — | — | — | — | — |
| 12 | 5 | 7 | 3 | 2 | 1 | 4 | — | 4 | — | — | — | — | — | — |
| 18 | 7 | 11 | 4 | 1 | 3 | 1 | — | 1 | — | — | — | — | — | — |
| 18 | 6 | 12 | 9 | 2 | 7 | 1 | 1 | — | — | — | — | — | — | — |

| 町 丁 | 65 ~ 69 歳 | | | 70 ~ 74 歳 | | | 75 ~ 79 歳 | | |
|-------|-----------|----|----|-----------|----|----|-----------|----|----|
| | 総 数 | 男 | 女 | 総 数 | 男 | 女 | 総 数 | 男 | 女 |
| 平 塚 1 | 83 | 38 | 45 | 83 | 33 | 50 | 42 | 19 | 23 |
| 平 塚 2 | 88 | 44 | 44 | 67 | 33 | 34 | 44 | 16 | 28 |
| 平 塚 3 | 68 | 34 | 34 | 66 | 32 | 34 | 41 | 15 | 26 |
| 旗の台 1 | 42 | 21 | 21 | 28 | 10 | 18 | 21 | 11 | 10 |
| 旗の台 2 | 73 | 30 | 43 | 59 | 28 | 31 | 28 | 11 | 17 |
| 旗の台 3 | 76 | 33 | 43 | 63 | 27 | 36 | 38 | 20 | 18 |
| 旗の台 4 | 98 | 46 | 52 | 66 | 22 | 44 | 40 | 13 | 27 |
| 旗の台 5 | 123 | 68 | 55 | 90 | 43 | 47 | 56 | 24 | 32 |
| 旗の台 6 | 107 | 50 | 57 | 93 | 43 | 50 | 57 | 25 | 32 |
| 中 延 1 | 70 | 36 | 34 | 51 | 22 | 29 | 27 | 16 | 11 |
| 中 延 2 | 112 | 52 | 60 | 87 | 37 | 50 | 46 | 23 | 23 |
| 中 延 3 | 80 | 36 | 44 | 66 | 32 | 34 | 20 | 11 | 9 |
| 中 延 4 | 97 | 43 | 54 | 86 | 36 | 50 | 37 | 24 | 13 |
| 中 延 5 | 110 | 46 | 64 | 74 | 40 | 34 | 46 | 23 | 23 |
| 中 延 6 | 60 | 29 | 31 | 63 | 29 | 34 | 38 | 20 | 18 |
| 西中延 1 | 71 | 34 | 37 | 50 | 20 | 30 | 30 | 14 | 16 |
| 西中延 2 | 124 | 55 | 69 | 104 | 45 | 59 | 44 | 25 | 19 |
| 西中延 3 | 80 | 35 | 45 | 62 | 31 | 31 | 31 | 12 | 19 |
| 東中延 1 | 83 | 35 | 48 | 55 | 29 | 26 | 36 | 16 | 20 |
| 東中延 2 | 86 | 40 | 46 | 48 | 26 | 22 | 34 | 12 | 22 |
| 戸 越 1 | 132 | 61 | 71 | 112 | 48 | 64 | 55 | 22 | 33 |
| 戸 越 2 | 87 | 34 | 53 | 61 | 31 | 30 | 27 | 16 | 11 |
| 戸 越 3 | 70 | 27 | 43 | 54 | 24 | 30 | 43 | 17 | 26 |
| 戸 越 4 | 85 | 43 | 42 | 75 | 26 | 49 | 50 | 26 | 24 |
| 戸 越 5 | 112 | 51 | 61 | 70 | 38 | 32 | 35 | 11 | 24 |
| 戸 越 6 | 135 | 63 | 72 | 102 | 56 | 46 | 72 | 38 | 34 |
| 豊 町 1 | 107 | 33 | 74 | 84 | 44 | 40 | 49 | 26 | 23 |
| 豊 町 2 | 113 | 48 | 65 | 84 | 39 | 45 | 59 | 21 | 38 |
| 豊 町 3 | 60 | 30 | 30 | 41 | 17 | 24 | 26 | 9 | 17 |
| 豊 町 4 | 122 | 62 | 60 | 92 | 43 | 49 | 55 | 19 | 36 |
| 豊 町 5 | 69 | 25 | 44 | 67 | 33 | 34 | 36 | 16 | 20 |
| 豊 町 6 | 115 | 52 | 63 | 106 | 49 | 57 | 61 | 17 | 44 |
| 二 葉 1 | 162 | 68 | 94 | 139 | 64 | 75 | 86 | 37 | 49 |
| 二 葉 2 | 96 | 40 | 56 | 74 | 34 | 40 | 51 | 25 | 26 |
| 二 葉 3 | 116 | 51 | 65 | 77 | 34 | 43 | 38 | 19 | 19 |
| 二 葉 4 | 116 | 60 | 56 | 67 | 30 | 37 | 51 | 20 | 31 |

| 80 ~ 84 歳 | | | 85 ~ 89 歳 | | | 90 ~ 94 歳 | | | 95 ~ 99 歳 | | | 100 歳 以上 | | |
|-----------|----|----|-----------|---|----|-----------|---|---|-----------|---|---|----------|---|---|
| 総 数 | 男 | 女 | 総 数 | 男 | 女 | 総 数 | 男 | 女 | 総 数 | 男 | 女 | 総 数 | 男 | 女 |
| 22 | 13 | 9 | 7 | 1 | 6 | — | — | — | — | — | — | — | — | — |
| 23 | 11 | 12 | 2 | — | 2 | 1 | 1 | — | — | — | — | — | — | — |
| 15 | 8 | 7 | 4 | 1 | 3 | 1 | — | 1 | — | — | — | — | — | — |
| 8 | 3 | 5 | 6 | 2 | 4 | — | — | — | 1 | — | 1 | — | — | — |
| 19 | 10 | 9 | 5 | 3 | 2 | 2 | — | 2 | — | — | — | — | — | — |
| 10 | 6 | 4 | 8 | 2 | 6 | 1 | — | 1 | — | — | — | — | — | — |
| 19 | 7 | 12 | 8 | 2 | 6 | 3 | 1 | 2 | 1 | — | 1 | — | — | — |
| 22 | 9 | 13 | 7 | 2 | 5 | 2 | 1 | 1 | — | — | — | — | — | — |
| 46 | 29 | 17 | 19 | 8 | 11 | 4 | 2 | 2 | 1 | — | 1 | — | — | — |
| 12 | 8 | 4 | 3 | 1 | 2 | 1 | — | 1 | — | — | — | — | — | — |
| 15 | 8 | 7 | 5 | 2 | 3 | 1 | — | 1 | — | — | — | — | — | — |
| 11 | 3 | 8 | 3 | 1 | 2 | — | — | — | — | — | — | — | — | — |
| 19 | 8 | 11 | 5 | 2 | 3 | 3 | — | 3 | — | — | — | — | — | — |
| 13 | 4 | 9 | 6 | 1 | 5 | 1 | — | 1 | — | — | — | — | — | — |
| 14 | 5 | 9 | 5 | 1 | 4 | — | — | — | — | — | — | — | — | — |
| 12 | 6 | 6 | 4 | 1 | 3 | — | — | — | — | — | — | — | — | — |
| 19 | 10 | 9 | 1 | — | 1 | 1 | — | 1 | — | — | — | — | — | — |
| 18 | 5 | 12 | 2 | 1 | 1 | 1 | — | 1 | — | — | — | — | — | — |
| 11 | 6 | 6 | 4 | 1 | 3 | — | — | — | — | — | — | — | — | — |
| 13 | 8 | 5 | 3 | — | 3 | 1 | — | 1 | — | — | — | — | — | — |
| 16 | 6 | 10 | 11 | 5 | 6 | 1 | 1 | — | — | — | — | — | — | — |
| 13 | 3 | 10 | 7 | 1 | 6 | 1 | 1 | — | — | — | — | — | — | — |
| 10 | 4 | 6 | 6 | 3 | 3 | — | — | — | — | — | — | — | — | — |
| 16 | 7 | 9 | 3 | 1 | 2 | 1 | 1 | — | — | — | — | — | — | — |
| 21 | 9 | 12 | 7 | 2 | 5 | 1 | 1 | — | 1 | 1 | — | — | — | — |
| 15 | 7 | 8 | 4 | 2 | 2 | 3 | 1 | 2 | — | — | — | — | — | — |
| 25 | 15 | 10 | 8 | 3 | 5 | 3 | 1 | 2 | — | — | — | — | — | — |
| 24 | 8 | 16 | 6 | 4 | 2 | 1 | — | 1 | — | — | — | — | — | — |
| 13 | 8 | 5 | 9 | 2 | 7 | 1 | 1 | — | — | — | — | — | — | — |
| 21 | 11 | 10 | 1 | — | 1 | 1 | — | 1 | — | — | — | — | — | — |
| 6 | 4 | 2 | 4 | 3 | 1 | 1 | — | 1 | — | — | — | — | — | — |
| 28 | 12 | 16 | 5 | 1 | 4 | 3 | — | 3 | — | — | — | — | — | — |
| 36 | 17 | 19 | 6 | 2 | 4 | 2 | — | 2 | 1 | — | 1 | — | — | — |
| 17 | 9 | 8 | 4 | 1 | 3 | — | — | — | — | — | — | — | — | — |
| 11 | 6 | 5 | 5 | — | 5 | — | — | — | — | — | — | — | — | — |
| 16 | 8 | 8 | 4 | 1 | 3 | 2 | — | 2 | — | — | — | — | — | — |

6 住民基本台帳による年齢階層別人口の推移状況

(各年1月1日)

| 年 令 | 昭 和 45 年 | 46 | 47 | 48 | 49 |
|-------------|----------|---------|---------|---------|---------|
| 総 数 | 391,703 | 388,122 | 381,143 | 374,534 | 366,061 |
| 幼 年 人 口 | 70,661 | 70,757 | 70,274 | 69,879 | 68,908 |
| 0歳～ 4歳 | 28,939 | 28,510 | 28,810 | 27,948 | 27,241 |
| 5 ～ 9 | 22,237 | 22,848 | 22,037 | 22,409 | 22,336 |
| 10 ～ 14 | 19,485 | 19,399 | 19,427 | 19,522 | 19,331 |
| 生 産 年 令 人 口 | 298,242 | 293,966 | 287,029 | 279,947 | 271,658 |
| 15 ～ 19 | 31,612 | 29,023 | 26,905 | 24,995 | 23,470 |
| 20 ～ 24 | 60,107 | 61,169 | 59,815 | 54,387 | 49,538 |
| 25 ～ 29 | 51,347 | 47,798 | 43,311 | 44,046 | 43,117 |
| 30 ～ 34 | 35,692 | 34,728 | 34,602 | 33,861 | 33,924 |
| 35 ～ 39 | 29,623 | 30,015 | 29,706 | 29,266 | 28,029 |
| 40 ～ 44 | 25,259 | 25,584 | 25,648 | 25,610 | 25,411 |
| 45 ～ 49 | 20,149 | 20,936 | 21,555 | 22,153 | 22,511 |
| 50 ～ 54 | 16,983 | 17,102 | 17,346 | 17,428 | 17,796 |
| 55 ～ 59 | 15,181 | 15,283 | 15,247 | 15,386 | 14,926 |
| 60 ～ 64 | 12,289 | 12,328 | 12,894 | 12,815 | 12,936 |
| 老 年 人 口 | 22,800 | 23,399 | 23,840 | 24,708 | 25,495 |
| 65 ～ 69 | 10,030 | 10,158 | 9,797 | 9,950 | 10,122 |
| 70 ～ 74 | 6,969 | 7,247 | 7,578 | 7,794 | 7,954 |
| 75 ～ 79 | 3,591 | 3,710 | 4,067 | 4,320 | 4,666 |
| 80 ～ 84 | 1,615 | 1,641 | 1,745 | 1,923 | 1,968 |
| 85 ～ 89 | 491 | 513 | 533 | 589 | 632 |
| 90 ～ 94 | 98 | 123 | 113 | 120 | 138 |
| 95 ～ 99 | 6 | 6 | 7 | 12 | 14 |
| 100 歳以上 | — | 1 | — | — | 1 |

7 戸 籍 諸 届 出 件 数

| 年および月次 | 乳 児 死 亡 数 | | | 死 産 数 | | | | 婚 姻 届 出 件 数 | 離 婚 届 出 件 数 |
|----------|-----------|-----|-----|-------|-----|-----|-----|-------------|-------------|
| | 総 数 | 男 | 女 | 総 数 | 男 | 女 | 不 詳 | | |
| 昭 和 39 年 | 108 | 64 | 44 | 667 | 325 | 286 | 56 | 5,741 | 401 |
| 40 | 103 | ... | ... | 570 | 271 | 230 | 69 | 5,811 | 469 |
| 41 | 70 | 39 | 31 | 525 | 267 | 208 | 50 | 5,532 | 519 |
| 42 | 83 | 45 | 38 | 612 | 283 | 256 | 73 | 5,422 | 480 |
| 43 | ... | ... | ... | 535 | 245 | 205 | 85 | 5,353 | 487 |
| 44 | 73 | 51 | 22 | 542 | 244 | 182 | 116 | 5,118 | 483 |
| 45 | 68 | 33 | 35 | 525 | 234 | 169 | 122 | 5,150 | 514 |
| 46 | 88 | 45 | 43 | 514 | 224 | 159 | 131 | 5,192 | 510 |
| 47 | 48 | 29 | 19 | 409 | 169 | 134 | 106 | 5,176 | 572 |
| 48 | 61 | 30 | 31 | 358 | 154 | 113 | 91 | 8,417 | 938 |
| 1 月 | 9 | 7 | 2 | 28 | 10 | 9 | 9 | 548 | 73 |
| 2 | 8 | 5 | 3 | 40 | 14 | 16 | 10 | 593 | 79 |
| 3 | 3 | 2 | 1 | 41 | 22 | 13 | 6 | 817 | 102 |
| 4 | 6 | 2 | 4 | 27 | 11 | 6 | 10 | 843 | 72 |
| 5 | 7 | 4 | 3 | 32 | 14 | 10 | 8 | 1,028 | 98 |
| 6 | — | — | — | 35 | 16 | 11 | 8 | 799 | 81 |
| 7 | 4 | 1 | 3 | 20 | 13 | 5 | 2 | 479 | 80 |
| 8 | 4 | 1 | 3 | 24 | 8 | 10 | 6 | 368 | 70 |
| 9 | 3 | 1 | 2 | 29 | 12 | 8 | 9 | 354 | 68 |
| 10 | 6 | 3 | 3 | 27 | 13 | 10 | 4 | 847 | 75 |
| 11 | 4 | 1 | 3 | 26 | 7 | 8 | 11 | 914 | 68 |
| 12 | 7 | 3 | 4 | 29 | 14 | 7 | 8 | 827 | 72 |

- 注) 1. 乳児とは1年未満の者。
 2. 死産とは妊娠4ヶ月以上の死産児である。

8 人 口

| 増減 | | (計男女) | △ 6,979 | △ 6,609 | △ 8,473 | △ 752 | △ 775 | △ 1,863 | 1,525 |
|---------|--------------|--------|---------|---------|---------|-------|-------|---------|-------|
| | | | △ 4,750 | △ 3,812 | △ 4,627 | △ 460 | △ 419 | △ 1,223 | 829 |
| | | | △ 2,229 | △ 2,797 | △ 3,846 | △ 292 | △ 356 | △ 640 | 696 |
| 年次および月次 | | | 昭和46年 | 47 | 48 | 1 月 | 2 | 3 | 4 |
| 記 | 総計 | (計男女) | 64,055 | 59,292 | 55,505 | 4,071 | 4,142 | 6,678 | 7,402 |
| | | | 33,232 | 30,822 | 29,211 | 2,162 | 2,227 | 3,235 | 3,919 |
| | 転入 | (計男女) | 24,392 | 22,795 | 21,234 | 1,361 | 1,382 | 3,189 | 3,765 |
| | | | 12,765 | 11,954 | 11,317 | 757 | 775 | 1,462 | 2,008 |
| | 都外 | (計男女) | 11,627 | 10,841 | 9,917 | 604 | 607 | 1,727 | 1,757 |
| | | | | | | | | | |
| | 都内 | (計男女) | 20,364 | 17,743 | 17,611 | 1,297 | 1,404 | 1,901 | 2,128 |
| | | | 10,503 | 9,286 | 9,301 | 674 | 756 | 1,002 | 1,150 |
| | 前住所なしおよび国外より | (計男女) | 9,861 | 8,457 | 8,310 | 623 | 648 | 899 | 978 |
| | | | | | | | | | |
| 転居 | (計男女) | 1,013 | 652 | 535 | 46 | 54 | 62 | 46 | |
| | | 565 | 365 | 327 | 28 | 30 | 32 | 29 | |
| その他 | (計男女) | 448 | 287 | 208 | 18 | 24 | 30 | 17 | |
| | | | | | | | | | |
| 転出 | (計男女) | 9,751 | 9,735 | 8,410 | 680 | 742 | 873 | 877 | |
| | | 4,968 | 4,835 | 4,227 | 352 | 377 | 423 | 420 | |
| 出生 | (計男女) | 4,783 | 4,900 | 4,183 | 328 | 365 | 450 | 457 | |
| | | | | | | | | | |
| その他 | (計男女) | 7,304 | 7,040 | 6,847 | 644 | 520 | 598 | 550 | |
| | | 3,792 | 3,586 | 3,529 | 324 | 263 | 286 | 293 | |
| その他 | (計男女) | 3,512 | 3,454 | 3,318 | 320 | 257 | 312 | 257 | |
| | | | | | | | | | |
| その他 | (計男女) | 1,231 | 1,327 | 868 | 43 | 40 | 55 | 36 | |
| | | 639 | 796 | 510 | 27 | 26 | 30 | 19 | |
| その他 | (計男女) | 592 | 531 | 358 | 16 | 14 | 25 | 17 | |
| | | | | | | | | | |
| 消 | 総計 | (計男女) | 71,034 | 65,901 | 63,978 | 4,823 | 4,917 | 8,541 | 5,877 |
| | | | 37,982 | 34,634 | 33,838 | 2,622 | 2,646 | 4,458 | 3,090 |
| | 転出 | (計男女) | 33,052 | 31,267 | 30,140 | 2,201 | 2,271 | 4,083 | 2,787 |
| | | | | | | | | | |
| | 都外 | (計男女) | 31,554 | 30,389 | 29,667 | 2,120 | 2,203 | 4,435 | 2,915 |
| | | | 17,097 | 16,342 | 16,096 | 1,178 | 1,212 | 2,343 | 1,569 |
| | 都内 | (計男女) | 14,457 | 14,047 | 13,571 | 942 | 991 | 2,092 | 1,346 |
| | | | | | | | | | |
| | 国外移住 | (計男女) | 23,478 | 21,973 | 21,879 | 1,649 | 1,744 | 2,920 | 2,015 |
| | | | 12,075 | 11,141 | 11,321 | 869 | 916 | 1,527 | 1,053 |
| その他 | (計男女) | 11,403 | 10,832 | 10,558 | 780 | 828 | 1,393 | 962 | |
| | | | | | | | | | |
| 転居 | (計男女) | 377 | 315 | 290 | 27 | 19 | 27 | 20 | |
| | | 199 | 160 | 150 | 17 | 10 | 12 | 10 | |
| その他 | (計男女) | 178 | 155 | 140 | 10 | 9 | 15 | 10 | |
| | | | | | | | | | |
| 転居 | (計男女) | 9,527 | 9,539 | 8,242 | 710 | 707 | 926 | 784 | |
| | | 4,851 | 4,764 | 4,125 | 364 | 358 | 448 | 379 | |
| 死亡 | (計男女) | 4,676 | 4,775 | 4,117 | 346 | 349 | 478 | 405 | |
| | | | | | | | | | |
| その他 | (計男女) | 1,988 | 1,926 | 1,853 | 207 | 166 | 166 | 107 | |
| | | 1,088 | 1,035 | 1,026 | 122 | 100 | 87 | 53 | |
| その他 | (計男女) | 900 | 891 | 827 | 85 | 66 | 79 | 54 | |
| | | | | | | | | | |
| その他 | (計男女) | 4,110 | 1,759 | 2,047 | 110 | 78 | 67 | 36 | |
| | | 2,672 | 1,192 | 1,120 | 72 | 50 | 41 | 26 | |
| その他 | (計男女) | 1,438 | 567 | 927 | 38 | 28 | 26 | 10 | |
| | | | | | | | | | |

異 動

| 異動 | | 159 | △ 648 | △ 1,005 | △ 1,230 | △ 801 | △ 1,121 | △ 897 | △ 1,065 | |
|---------|--------------|-------|-------|---------|---------|-------|---------|-------|---------|-------|
| | | 29 | △ 332 | △ 439 | △ 595 | △ 470 | △ 637 | △ 468 | △ 442 | |
| | | 130 | △ 316 | △ 566 | △ 635 | △ 331 | △ 484 | △ 429 | △ 623 | |
| 年次および月次 | | 5 | 6 | 7 | 8 | 9 | 10 | 11 | 12 | |
| 記 | 総計 | | 5,411 | 4,139 | 4,154 | 3,700 | 3,502 | 4,353 | 4,051 | 3,902 |
| | | | 2,818 | 2,198 | 2,250 | 2,036 | 1,861 | 2,291 | 2,145 | 2,069 |
| | 転入 | | 2,593 | 1,941 | 1,904 | 1,664 | 1,641 | 2,062 | 1,906 | 1,833 |
| | | | | | | | | | | |
| | 都外 | (計男女) | 2,177 | 1,353 | 1,379 | 1,359 | 1,257 | 1,440 | 1,361 | 1,211 |
| | | | 1,159 | 751 | 776 | 768 | 696 | 787 | 731 | 647 |
| | 都内 | (計男女) | 1,018 | 602 | 603 | 591 | 561 | 653 | 630 | 564 |
| | | | | | | | | | | |
| | 前住所なしおよび国外より | (計男女) | 1,786 | 1,438 | 1,375 | 1,143 | 1,052 | 1,529 | 1,345 | 1,213 |
| | | | 924 | 736 | 730 | 620 | 585 | 790 | 712 | 622 |
| 転居 | (計男女) | 862 | 702 | 645 | 523 | 467 | 739 | 633 | 591 | |
| | | | | | | | | | | |
| 出生 | (計男女) | 56 | 53 | 40 | 59 | 40 | 27 | 32 | 20 | |
| | | 39 | 32 | 27 | 39 | 21 | 20 | 19 | 11 | |
| その他 | (計男女) | 17 | 21 | 13 | 20 | 19 | 7 | 13 | 9 | |
| | | | | | | | | | | |
| 転出 | (計男女) | 747 | 711 | 694 | 560 | 532 | 754 | 669 | 571 | |
| | | 372 | 374 | 348 | 292 | 265 | 379 | 354 | 271 | |
| 出生 | (計男女) | 375 | 337 | 346 | 268 | 267 | 375 | 315 | 300 | |
| | | | | | | | | | | |
| その他 | (計男女) | 600 | 559 | 610 | 539 | 592 | 572 | 585 | 478 | |
| | | 301 | 296 | 338 | 295 | 279 | 296 | 299 | 259 | |
| その他 | (計男女) | 299 | 263 | 272 | 244 | 313 | 276 | 286 | 219 | |
| | | | | | | | | | | |
| その他 | (計男女) | 45 | 25 | 56 | 40 | 29 | 31 | 59 | 409 | |
| | | 23 | 9 | 31 | 22 | 15 | 19 | 30 | 259 | |
| その他 | (計男女) | 22 | 16 | 25 | 18 | 14 | 12 | 29 | 150 | |
| | | | | | | | | | | |
| 消 | 総計 | | 5,252 | 4,787 | 5,159 | 4,930 | 4,303 | 5,474 | 4,948 | 4,967 |
| | | | 2,789 | 2,530 | 2,689 | 2,631 | 2,331 | 2,928 | 2,613 | 2,511 |
| | 転出 | | 2,463 | 2,257 | 2,470 | 2,299 | 1,972 | 2,546 | 2,335 | 2,456 |
| | | | | | | | | | | |
| | 都外 | (計男女) | 2,366 | 2,048 | 2,576 | 2,501 | 2,122 | 2,399 | 2,043 | 1,939 |
| | | | 1,295 | 1,115 | 1,401 | 1,375 | 1,156 | 1,320 | 1,110 | 1,022 |
| | 都内 | (計男女) | 1,071 | 933 | 1,175 | 1,126 | 966 | 1,079 | 933 | 917 |
| | | | | | | | | | | |
| | 国外移住 | (計男女) | 1,919 | 1,814 | 1,698 | 1,657 | 1,442 | 1,838 | 1,741 | 1,442 |
| | | | 990 | 932 | 848 | 851 | 784 | 935 | 869 | 747 |
| その他 | (計男女) | 929 | 882 | 850 | 806 | 658 | 903 | 872 | 695 | |
| | | | | | | | | | | |
| 転居 | (計男女) | 19 | 29 | 21 | 30 | 10 | 33 | 32 | 23 | |
| | | 9 | 15 | 4 | 19 | 8 | 17 | 17 | 12 | |
| その他 | (計男女) | 10 | 14 | 17 | 11 | 2 | 16 | 15 | 11 | |
| | | | | | | | | | | |
| 転居 | (計男女) | 738 | 672 | 666 | 544 | 529 | 744 | 668 | 554 | |
| | | 375 | 345 | 336 | 274 | 272 | 371 | 337 | 266 | |
| 死亡 | (計男女) | 363 | 327 | 330 | 270 | 257 | 373 | 331 | 288 | |
| | | | | | | | | | | |
| その他 | (計男女) | 162 | 138 | 140 | 155 | 141 | 171 | 144 | 156 | |
| | | 95 | 73 | 71 | 89 | 74 | 98 | 70 | 94 | |
| その他 | (計男女) | 67 | 65 | 69 | 66 | 67 | 73 | 74 | 62 | |
| | | | | | | | | | | |
| その他 | (計男女) | 48 | 86 | 58 | 43 | 59 | 289 | 320 | 853 | |
| | | 25 | 50 | 29 | 23 | 37 | 187 | 210 | 370 | |
| その他 | (計男女) | 23 | 36 | 29 | 20 | 22 | 102 | 110 | 483 | |
| | | | | | | | | | | |

9 各都道府県より品川区へ転入した従前地別人口

(昭和 48 年)

| 従前の住所地 | 転入者数 | | | 従前の住所地 | 転入者数 | | |
|--------|--------|--------|--------|---------|------|-----|-----|
| | 総数 | 男 | 女 | | 総数 | 男 | 女 |
| 総数 | 39,380 | 20,945 | 18,435 | 滋賀県 | 47 | 31 | 16 |
| 北海道 | 965 | 564 | 401 | 京都府 | 177 | 94 | 83 |
| 青森県 | 406 | 180 | 226 | 大阪府 | 719 | 466 | 253 |
| 岩手県 | 462 | 226 | 236 | 兵庫県 | 478 | 297 | 181 |
| 宮城県 | 492 | 267 | 225 | 奈良県 | 44 | 30 | 14 |
| 秋田県 | 404 | 169 | 235 | 和歌山県 | 42 | 25 | 17 |
| 山形県 | 415 | 206 | 209 | 鳥取県 | 55 | 38 | 17 |
| 福島県 | 699 | 305 | 394 | 島根県 | 62 | 35 | 27 |
| 茨城県 | 682 | 330 | 352 | 岡山県 | 142 | 73 | 69 |
| 栃木県 | 433 | 192 | 241 | 広島県 | 283 | 173 | 110 |
| 群馬県 | 331 | 149 | 182 | 山口県 | 164 | 93 | 71 |
| 埼玉県 | 1,556 | 894 | 662 | 徳島県 | 45 | 23 | 22 |
| 千葉県 | 1,665 | 929 | 736 | 香川県 | 79 | 47 | 32 |
| 東京都 | 17,611 | 9,301 | 8,310 | 愛媛県 | 113 | 59 | 54 |
| 神奈川県 | 4,847 | 2,704 | 2,143 | 高知県 | 78 | 41 | 37 |
| 新潟県 | 724 | 330 | 394 | 福岡県 | 445 | 227 | 218 |
| 富山県 | 134 | 71 | 63 | 佐賀県 | 131 | 62 | 69 |
| 石川県 | 150 | 91 | 59 | 長崎県 | 265 | 135 | 130 |
| 福井県 | 39 | 25 | 14 | 熊本県 | 240 | 117 | 123 |
| 山梨県 | 288 | 133 | 155 | 大分県 | 120 | 64 | 56 |
| 長野県 | 513 | 232 | 281 | 宮崎県 | 159 | 81 | 78 |
| 岐阜県 | 107 | 67 | 40 | 鹿児島県 | 438 | 212 | 226 |
| 静岡県 | 722 | 378 | 344 | 沖縄県 | 300 | 129 | 171 |
| 愛知県 | 491 | 281 | 210 | 国外 | 237 | 131 | 106 |
| 三重県 | 83 | 42 | 41 | 従前の住所なし | 298 | 196 | 102 |

下欄の各都市については、それぞれの都市のある都道府県からの転入者のうちそれぞれ都市からの転入者を再掲したものである。

| | | | | | | | |
|--------|--------|-------|-------|------|-----|-----|----|
| 札幌市 | 257 | 143 | 114 | 京都市 | 121 | 66 | 55 |
| 東京都の区部 | 15,921 | 8,391 | 7,530 | 大阪市 | 273 | 185 | 88 |
| 横浜市 | 2,106 | 1,203 | 903 | 神戸市 | 140 | 86 | 54 |
| 川崎市 | 1,558 | 822 | 736 | 北九州市 | 91 | 45 | 46 |
| 名古屋市 | 244 | 135 | 109 | 福岡市 | 132 | 76 | 56 |

10 外国人登録国籍別人口

(各年12月31日)

| 国 籍 | 昭 和 44 年 | 45 | 46 | 47 | 48 |
|---------------|----------|-------|-------|-------|-------|
| 総 数 | 3,486 | 3,575 | 3,608 | 3,645 | 3,716 |
| 朝鮮および韓国 | 2,337 | 2,350 | 2,314 | 2,310 | 2,328 |
| 中 国 | 584 | 592 | 621 | 565 | 606 |
| 米 国 | 201 | 208 | 209 | 195 | 202 |
| ド イ ツ | 56 | 65 | 94 | 107 | 125 |
| インドネシア | 35 | 34 | 60 | 64 | 71 |
| 英 国 | 69 | 57 | 49 | 53 | 49 |
| ス ペ イ ン | 18 | 19 | 18 | 10 | 9 |
| カ ナ ダ | 16 | 15 | 17 | 17 | 16 |
| イ タ リ ア | 2 | 8 | 15 | 12 | 15 |
| パキスタン | ... | ... | 14 | 6 | 9 |
| タ イ | 15 | 14 | 13 | 9 | 29 |
| オーストラリア | 18 | 22 | 12 | 8 | 8 |
| ヴ ェ ト ナ ム | 6 | 14 | 12 | 19 | 11 |
| ブ ラ ジ ル | 6 | 10 | 10 | 15 | 17 |
| フ ラ ン ス | 6 | 3 | 10 | 18 | 16 |
| ス イ ス | 14 | 18 | 10 | 21 | 13 |
| ビ ル マ | ... | 4 | 9 | 6 | 1 |
| イ ン ド | 3 | 5 | 9 | 13 | 19 |
| オ ラ ン ダ | 5 | 6 | 8 | 6 | 8 |
| フィリピン | 7 | 9 | 8 | 10 | 13 |
| ニュージーランド | 5 | 6 | 7 | 3 | 2 |
| デンマーク | 7 | 7 | 7 | 8 | 10 |
| セ イ ロ ン | ... | ... | 6 | — | — |
| イスラエル | 8 | 4 | 6 | 7 | 8 |
| マレーシア | 2 | 7 | 6 | 14 | 14 |
| チェコスロヴァ キア | ... | ... | 5 | 4 | 3 |
| イ ラ ン | 5 | 5 | 5 | 5 | 4 |
| 南アフリカ | ... | 5 | 5 | 6 | 6 |
| アイスランド | ... | ... | 4 | — | — |
| ポルトガル | 5 | 6 | 4 | 4 | 2 |
| ベルギー | 3 | 3 | 3 | 1 | — |
| ボリヴィア | ... | ... | 3 | 5 | 4 |
| ネーパール | ... | ... | 3 | 2 | 5 |
| ユーゴスラヴィ ア | 9 | 7 | 3 | 2 | 2 |
| 無 国 籍 | 7 | 26 | 11 | 81 | 52 |
| そ の 他 | 37 | 26 | 18 | 39 | 39 |

11 住民基本台帳による年令

(各年1月1日)

住民基本台帳登録人口の推移

右図のグラフより昭和35年から昭和49年まで(各年1月1日現在)の人口の推移をみると昭和39年以前と以後では大きな変化がある。

即ち昭和35年から昭和39年までは年平均3,000人の人口増があったが、昭和39年以後昭和49年までは年平均4,900人の減となってきた。

これは社会増人口の減少が原因と思われる今後の品川区の人口構造にも影響があるので昭和50年から昭和54年までの5年間に於いて人口及び性別、年令構造を適確には握るため推計を行った。

昭和45年から昭和49年までの各年1月1日現在における年令別、男女別構造の変化を次の①～③式により昭和54年までの変化傾向を推計し、これを更に昭和45年から昭和49年までの各年1月1日における年令別性別(男女の比率)で補正した。

α→年令 β→年度

$$X_{\beta}^{\alpha} = X_{\beta-1}^{\alpha-1} (1 - \frac{\alpha-1}{\text{死亡率}}) + \text{社会増減数} \dots\dots\dots ①$$

$$\text{社会増減数} = X_{\beta}^{\alpha} - X_{\beta-1}^{\alpha-1} (1 - \frac{\alpha-1}{\text{死亡率}}) \dots\dots\dots ②$$

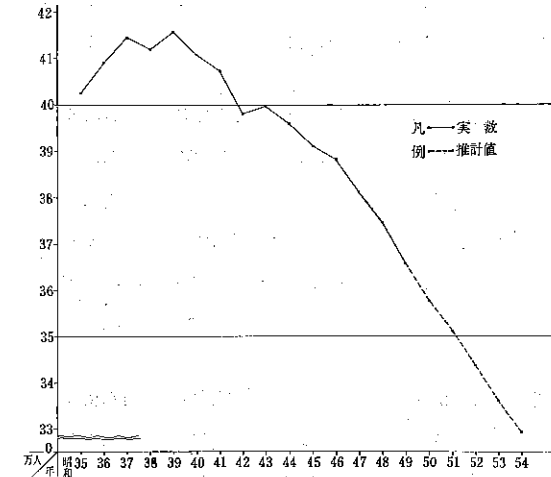
$$\text{社会増減比率} = \frac{\text{社会増減数}}{X_{\beta-1}^{\alpha-1} (1 - \frac{\alpha-1}{\text{死亡率}})} \dots\dots\dots ③$$

| 年令 | 昭和49年 | | | 50 | | | 51 | | |
|-------|---------|---------|---------|---------|---------|---------|---------|---------|---------|
| | 総数 | 男 | 女 | 総数 | 男 | 女 | 総数 | 男 | 女 |
| 総数 | 366,061 | 183,545 | 182,516 | 357,529 | 179,234 | 178,295 | 351,012 | 175,970 | 175,042 |
| 0～4歳 | 27,241 | 14,008 | 13,233 | 26,749 | 13,759 | 12,990 | 26,246 | 13,500 | 12,746 |
| 0 | 5,820 | 3,004 | 2,816 | 5,686 | 2,931 | 2,755 | 5,579 | 2,876 | 2,703 |
| 1 | 5,707 | 2,869 | 2,838 | 5,569 | 2,831 | 2,738 | 5,465 | 2,778 | 2,687 |
| 2 | 5,475 | 2,816 | 2,659 | 5,393 | 2,788 | 2,605 | 5,293 | 2,736 | 2,557 |
| 3 | 5,168 | 2,613 | 2,555 | 5,115 | 2,634 | 2,481 | 5,018 | 2,584 | 2,434 |
| 4 | 5,071 | 2,706 | 2,365 | 4,986 | 2,575 | 2,411 | 4,891 | 2,526 | 2,365 |
| 5～9 | 22,336 | 11,341 | 10,995 | 22,137 | 11,287 | 10,850 | 21,618 | 11,022 | 10,596 |
| 5 | 4,901 | 2,492 | 2,409 | 4,682 | 2,378 | 2,304 | 4,586 | 2,329 | 2,257 |
| 6 | 4,892 | 2,436 | 2,456 | 4,563 | 2,325 | 2,238 | 4,408 | 2,246 | 2,162 |
| 7 | 3,731 | 1,925 | 1,806 | 4,349 | 2,228 | 2,121 | 4,259 | 2,182 | 2,077 |
| 8 | 4,522 | 2,315 | 2,207 | 4,393 | 2,244 | 2,149 | 4,303 | 2,198 | 2,105 |
| 9 | 4,290 | 2,173 | 2,117 | 4,150 | 2,112 | 2,038 | 4,062 | 2,067 | 1,995 |
| 10～14 | 19,331 | 9,894 | 9,437 | 19,260 | 9,854 | 9,406 | 18,865 | 9,652 | 9,213 |
| 10 | 4,017 | 2,063 | 1,954 | 4,002 | 2,046 | 1,956 | 3,921 | 2,005 | 1,916 |
| 11 | 3,865 | 1,955 | 1,910 | 3,890 | 1,991 | 1,899 | 3,810 | 1,950 | 1,860 |
| 12 | 3,886 | 2,000 | 1,886 | 3,859 | 1,976 | 1,883 | 3,781 | 1,936 | 1,845 |
| 13 | 3,761 | 1,912 | 1,849 | 3,759 | 1,913 | 1,846 | 3,681 | 1,873 | 1,808 |
| 14 | 3,802 | 1,964 | 1,838 | 3,750 | 1,928 | 1,822 | 3,672 | 1,888 | 1,784 |
| 15～19 | 23,470 | 11,995 | 11,475 | 21,716 | 11,093 | 10,623 | 21,324 | 10,893 | 10,431 |
| 15 | 3,768 | 1,918 | 1,850 | 3,311 | 1,705 | 1,606 | 3,251 | 1,674 | 1,577 |
| 16 | 3,735 | 1,995 | 1,740 | 3,649 | 1,944 | 1,705 | 3,583 | 1,909 | 1,674 |

別、男女別将来人口の推計

(各年1月1日)

将来人口の推計



| 年令 | 52 | | | 53 | | | 54 | | |
|-------|---------|---------|---------|---------|---------|---------|---------|---------|---------|
| | 総数 | 男 | 女 | 総数 | 男 | 女 | 総数 | 男 | 女 |
| 総数 | 343,568 | 172,203 | 171,365 | 335,989 | 168,387 | 167,602 | 328,695 | 164,783 | 163,912 |
| 0～4歳 | 25,698 | 13,218 | 12,480 | 25,145 | 12,934 | 12,211 | 24,594 | 12,649 | 11,945 |
| 0 | 5,463 | 2,816 | 2,647 | 5,346 | 2,756 | 2,590 | 5,228 | 2,695 | 2,533 |
| 1 | 5,351 | 2,720 | 2,631 | 5,235 | 2,661 | 2,574 | 5,121 | 2,603 | 2,518 |
| 2 | 5,181 | 2,678 | 2,503 | 5,070 | 2,621 | 2,449 | 4,960 | 2,564 | 2,396 |
| 3 | 4,913 | 2,530 | 2,383 | 4,808 | 2,476 | 2,332 | 4,700 | 2,419 | 2,281 |
| 4 | 4,790 | 2,474 | 2,316 | 4,686 | 2,420 | 2,266 | 4,585 | 2,368 | 2,217 |
| 5～9 | 21,229 | 10,824 | 10,405 | 20,774 | 10,591 | 10,183 | 20,323 | 10,362 | 9,961 |
| 5 | 4,491 | 2,281 | 2,210 | 4,395 | 2,232 | 2,163 | 4,300 | 2,184 | 2,116 |
| 6 | 4,375 | 2,229 | 2,146 | 4,281 | 2,181 | 2,100 | 4,190 | 2,135 | 2,055 |
| 7 | 4,171 | 2,137 | 2,034 | 4,082 | 2,091 | 1,991 | 3,992 | 2,045 | 1,947 |
| 8 | 4,213 | 2,152 | 2,061 | 4,123 | 2,106 | 2,017 | 4,033 | 2,060 | 1,973 |
| 9 | 3,979 | 2,025 | 1,954 | 3,893 | 1,981 | 1,912 | 3,808 | 1,938 | 1,870 |
| 10～14 | 18,470 | 9,450 | 9,020 | 17,892 | 9,154 | 8,738 | 17,657 | 9,023 | 8,634 |
| 10 | 3,839 | 1,963 | 1,876 | 3,718 | 1,901 | 1,817 | 3,654 | 1,858 | 1,796 |
| 11 | 3,730 | 1,909 | 1,821 | 3,613 | 1,849 | 1,764 | 3,570 | 1,827 | 1,743 |
| 12 | 3,701 | 1,895 | 1,806 | 3,584 | 1,835 | 1,749 | 3,541 | 1,813 | 1,728 |
| 13 | 3,604 | 1,834 | 1,770 | 3,492 | 1,777 | 1,715 | 3,451 | 1,756 | 1,695 |
| 14 | 3,596 | 1,849 | 1,747 | 3,485 | 1,792 | 1,693 | 3,441 | 1,769 | 1,672 |
| 15～19 | 20,880 | 10,666 | 10,214 | 20,435 | 10,439 | 9,996 | 19,913 | 10,171 | 9,742 |
| 15 | 3,183 | 1,639 | 1,544 | 3,115 | 1,604 | 1,511 | 2,973 | 1,531 | 1,442 |
| 16 | 3,508 | 1,869 | 1,639 | 3,433 | 1,829 | 1,604 | 3,356 | 1,787 | 1,569 |

| 年 令 | 昭 和 49 年 | | | 50 | | | 51 | | |
|---------|----------|--------|--------|--------|--------|--------|--------|--------|--------|
| | 総 数 | 男 | 女 | 総 数 | 男 | 女 | 総 数 | 男 | 女 |
| 17 | 4,001 | 2,083 | 1,918 | 3,882 | 2,065 | 1,817 | 3,811 | 2,027 | 1,784 |
| 18 | 4,960 | 2,543 | 2,417 | 4,603 | 2,351 | 2,252 | 4,520 | 2,309 | 2,211 |
| 19 | 7,006 | 3,456 | 3,550 | 6,271 | 3,028 | 3,243 | 6,159 | 2,974 | 3,185 |
| 20 ~ 24 | 49,538 | 26,166 | 23,372 | 45,661 | 24,298 | 21,363 | 44,840 | 23,862 | 20,978 |
| 20 | 8,224 | 4,030 | 4,194 | 6,948 | 3,431 | 3,517 | 6,824 | 3,370 | 3,454 |
| 21 | 9,394 | 4,778 | 4,616 | 8,166 | 4,192 | 3,974 | 8,021 | 4,118 | 3,903 |
| 22 | 9,648 | 5,029 | 4,619 | 9,291 | 4,913 | 4,378 | 9,124 | 4,825 | 4,299 |
| 23 | 10,432 | 5,709 | 4,723 | 10,366 | 5,679 | 4,687 | 10,178 | 5,576 | 4,602 |
| 24 | 11,840 | 6,620 | 5,220 | 10,890 | 6,083 | 4,807 | 10,693 | 5,973 | 4,720 |
| 25 ~ 29 | 43,117 | 24,247 | 18,870 | 41,498 | 23,500 | 17,998 | 40,771 | 23,088 | 17,683 |
| 25 | 11,101 | 6,209 | 4,892 | 10,151 | 5,751 | 4,400 | 9,980 | 5,654 | 4,326 |
| 26 | 11,023 | 6,191 | 4,832 | 8,537 | 4,861 | 3,676 | 8,393 | 4,779 | 3,614 |
| 27 | 7,343 | 4,219 | 3,124 | 7,540 | 4,303 | 3,237 | 7,405 | 4,226 | 3,179 |
| 28 | 6,163 | 3,460 | 2,703 | 7,558 | 4,261 | 3,297 | 7,420 | 4,183 | 3,237 |
| 29 | 7,487 | 4,168 | 3,319 | 7,712 | 4,324 | 3,388 | 7,573 | 4,246 | 3,327 |
| 30 ~ 34 | 33,924 | 18,098 | 15,826 | 33,590 | 17,852 | 15,738 | 33,059 | 17,570 | 15,489 |
| 30 | 7,903 | 4,368 | 3,535 | 8,170 | 4,461 | 3,709 | 8,040 | 4,390 | 3,650 |
| 31 | 7,059 | 3,788 | 3,271 | 7,333 | 3,917 | 3,416 | 7,217 | 3,855 | 3,362 |
| 32 | 7,103 | 3,726 | 3,377 | 6,613 | 3,505 | 3,108 | 6,509 | 3,450 | 3,059 |
| 33 | 6,345 | 3,313 | 3,032 | 5,887 | 3,095 | 2,792 | 5,794 | 3,046 | 2,748 |
| 34 | 5,514 | 2,903 | 2,611 | 5,587 | 2,874 | 2,713 | 5,499 | 2,829 | 2,670 |
| 35 ~ 39 | 28,029 | 13,779 | 14,250 | 27,303 | 13,364 | 13,939 | 26,830 | 13,132 | 13,698 |
| 35 | 5,310 | 2,707 | 2,603 | 5,673 | 2,846 | 2,827 | 5,570 | 2,794 | 2,776 |
| 36 | 5,913 | 2,904 | 3,009 | 5,833 | 2,889 | 2,944 | 5,728 | 2,837 | 2,891 |
| 37 | 5,601 | 2,765 | 2,836 | 5,469 | 2,673 | 2,796 | 5,389 | 2,634 | 2,755 |
| 38 | 5,998 | 2,918 | 3,080 | 5,285 | 2,542 | 2,743 | 5,190 | 2,496 | 2,694 |
| 39 | 5,207 | 2,485 | 2,722 | 5,043 | 2,414 | 2,629 | 4,953 | 2,371 | 2,582 |
| 40 ~ 44 | 25,411 | 12,038 | 13,373 | 25,076 | 11,842 | 13,234 | 24,625 | 11,629 | 12,996 |
| 40 | 5,358 | 2,545 | 2,813 | 5,411 | 2,597 | 2,814 | 5,313 | 2,550 | 2,763 |
| 41 | 5,372 | 2,575 | 2,797 | 5,234 | 2,485 | 2,749 | 5,141 | 2,441 | 2,700 |
| 42 | 5,087 | 2,426 | 2,661 | 4,954 | 2,339 | 2,615 | 4,865 | 2,297 | 2,568 |
| 43 | 4,948 | 2,309 | 2,639 | 4,807 | 2,250 | 2,557 | 4,720 | 2,209 | 2,511 |
| 44 | 4,646 | 2,183 | 2,463 | 4,670 | 2,171 | 2,499 | 4,586 | 2,132 | 2,454 |

| 年 令 | 52 | | | 53 | | | 54 | | |
|---------|--------|--------|--------|--------|--------|--------|--------|--------|--------|
| | 総 数 | 男 | 女 | 総 数 | 男 | 女 | 総 数 | 男 | 女 |
| 17 | 3,732 | 1,985 | 1,747 | 3,653 | 1,943 | 1,710 | 3,574 | 1,901 | 1,673 |
| 18 | 4,426 | 2,261 | 2,165 | 4,332 | 2,213 | 2,119 | 4,238 | 2,165 | 2,073 |
| 19 | 6,031 | 2,912 | 3,119 | 5,902 | 2,850 | 3,052 | 5,772 | 2,787 | 2,985 |
| 20 ~ 24 | 43,902 | 23,362 | 20,540 | 42,967 | 22,865 | 20,102 | 42,025 | 22,364 | 19,661 |
| 20 | 6,681 | 3,299 | 3,382 | 6,539 | 3,229 | 3,310 | 6,395 | 3,158 | 3,237 |
| 21 | 7,852 | 4,031 | 3,821 | 7,686 | 3,946 | 3,740 | 7,517 | 3,859 | 3,658 |
| 22 | 8,933 | 4,724 | 4,209 | 8,742 | 4,623 | 4,119 | 8,551 | 4,522 | 4,029 |
| 23 | 9,965 | 5,459 | 4,506 | 9,753 | 5,343 | 4,410 | 9,539 | 5,226 | 4,313 |
| 24 | 10,471 | 5,849 | 4,622 | 10,247 | 5,724 | 4,523 | 10,023 | 5,599 | 4,424 |
| 25 ~ 29 | 39,898 | 22,594 | 17,304 | 38,957 | 22,022 | 16,935 | 38,189 | 21,626 | 16,563 |
| 25 | 9,759 | 5,529 | 4,230 | 9,551 | 5,411 | 4,140 | 9,341 | 5,292 | 4,049 |
| 26 | 8,210 | 4,675 | 3,535 | 8,033 | 4,574 | 3,459 | 7,857 | 4,474 | 3,383 |
| 27 | 7,249 | 4,137 | 3,112 | 7,095 | 4,049 | 3,046 | 6,939 | 3,960 | 2,979 |
| 28 | 7,264 | 4,095 | 3,169 | 7,111 | 4,009 | 3,102 | 6,955 | 3,921 | 3,034 |
| 29 | 7,416 | 4,158 | 3,258 | 7,167 | 3,979 | 3,188 | 7,097 | 3,979 | 3,118 |
| 30 ~ 34 | 32,296 | 17,164 | 15,132 | 31,614 | 16,802 | 14,812 | 30,751 | 16,333 | 14,418 |
| 30 | 7,855 | 4,289 | 3,566 | 7,690 | 4,199 | 3,491 | 7,518 | 4,105 | 3,413 |
| 31 | 7,051 | 3,766 | 3,285 | 6,901 | 3,686 | 3,215 | 6,609 | 3,530 | 3,079 |
| 32 | 6,358 | 3,370 | 2,988 | 6,224 | 3,299 | 2,925 | 6,085 | 3,225 | 2,860 |
| 33 | 5,659 | 2,975 | 2,684 | 5,539 | 2,912 | 2,627 | 5,416 | 2,847 | 2,569 |
| 34 | 5,373 | 2,764 | 2,609 | 5,260 | 2,706 | 2,554 | 5,123 | 2,626 | 2,497 |
| 35 ~ 39 | 26,246 | 12,846 | 13,400 | 25,690 | 12,575 | 13,115 | 25,171 | 12,343 | 12,828 |
| 35 | 5,454 | 2,736 | 2,718 | 5,338 | 2,678 | 2,660 | 5,219 | 2,618 | 2,601 |
| 36 | 5,607 | 2,777 | 2,830 | 5,489 | 2,719 | 2,770 | 5,368 | 2,659 | 2,709 |
| 37 | 5,257 | 2,569 | 2,688 | 5,146 | 2,515 | 2,631 | 5,033 | 2,460 | 2,573 |
| 38 | 5,080 | 2,443 | 2,637 | 4,973 | 2,392 | 2,581 | 4,909 | 2,384 | 2,525 |
| 39 | 4,848 | 2,321 | 2,527 | 4,744 | 2,271 | 2,473 | 4,642 | 2,222 | 2,420 |
| 40 ~ 44 | 24,106 | 11,384 | 12,722 | 23,553 | 11,123 | 12,430 | 23,078 | 10,898 | 12,180 |
| 40 | 5,201 | 2,496 | 2,705 | 5,082 | 2,439 | 2,643 | 4,980 | 2,390 | 2,590 |
| 41 | 5,032 | 2,389 | 2,643 | 4,916 | 2,334 | 2,582 | 4,817 | 2,287 | 2,530 |
| 42 | 4,763 | 2,249 | 2,514 | 4,653 | 2,197 | 2,456 | 4,560 | 2,153 | 2,407 |
| 43 | 4,621 | 2,163 | 2,458 | 4,516 | 2,114 | 2,402 | 4,423 | 2,070 | 2,353 |
| 44 | 4,489 | 2,087 | 2,402 | 4,386 | 2,039 | 2,347 | 4,298 | 1,998 | 2,300 |

| 年 令 | 昭 和 49 年 | | | 50 | | | 51 | | |
|---------|----------|--------|--------|--------|--------|--------|--------|--------|--------|
| | 総 数 | 男 | 女 | 総 数 | 男 | 女 | 総 数 | 男 | 女 |
| 45 ~ 49 | 22,511 | 10,397 | 12,114 | 22,509 | 10,270 | 12,239 | 22,105 | 10,086 | 12,019 |
| 45 | 4,795 | 2,223 | 2,572 | 4,912 | 2,273 | 2,639 | 4,825 | 2,233 | 2,592 |
| 46 | 4,668 | 2,177 | 2,491 | 4,820 | 2,221 | 2,599 | 4,733 | 2,181 | 2,552 |
| 47 | 4,616 | 2,145 | 2,471 | 4,597 | 2,111 | 2,486 | 4,514 | 2,073 | 2,441 |
| 48 | 4,443 | 2,010 | 2,433 | 4,248 | 1,920 | 2,328 | 4,171 | 1,885 | 2,286 |
| 49 | 3,989 | 1,842 | 2,147 | 3,932 | 1,745 | 2,187 | 3,862 | 1,714 | 2,148 |
| 50 ~ 54 | 17,796 | 7,582 | 10,214 | 17,938 | 7,697 | 10,241 | 17,612 | 7,557 | 10,055 |
| 50 | 3,891 | 1,731 | 2,160 | 3,921 | 1,683 | 2,238 | 3,849 | 1,652 | 2,197 |
| 51 | 3,591 | 1,527 | 2,064 | 3,717 | 1,576 | 2,141 | 3,649 | 1,547 | 2,102 |
| 52 | 3,640 | 1,526 | 2,114 | 3,566 | 1,502 | 2,064 | 3,502 | 1,475 | 2,027 |
| 53 | 3,447 | 1,446 | 2,001 | 3,379 | 1,452 | 1,927 | 3,318 | 1,426 | 1,892 |
| 54 | 3,227 | 1,352 | 1,875 | 3,355 | 1,484 | 1,871 | 3,294 | 1,457 | 1,837 |
| 55 ~ 59 | 14,926 | 6,769 | 8,157 | 14,705 | 6,723 | 7,982 | 14,439 | 6,601 | 7,838 |
| 55 | 2,988 | 1,323 | 1,615 | 2,979 | 1,354 | 1,625 | 2,926 | 1,330 | 1,596 |
| 56 | 3,139 | 1,361 | 1,778 | 2,994 | 1,354 | 1,640 | 2,939 | 1,329 | 1,610 |
| 57 | 2,944 | 1,355 | 1,589 | 2,996 | 1,386 | 1,610 | 2,942 | 1,361 | 1,581 |
| 58 | 2,976 | 1,364 | 1,612 | 2,926 | 1,340 | 1,586 | 2,872 | 1,315 | 1,557 |
| 59 | 2,929 | 1,366 | 1,563 | 2,810 | 1,289 | 1,521 | 2,760 | 1,266 | 1,494 |
| 60 ~ 64 | 12,936 | 5,888 | 7,048 | 12,916 | 5,870 | 7,046 | 12,683 | 5,764 | 6,919 |
| 60 | 2,898 | 1,314 | 1,584 | 2,798 | 1,274 | 1,524 | 2,748 | 1,251 | 1,497 |
| 61 | 2,561 | 1,178 | 1,383 | 2,634 | 1,202 | 1,432 | 2,584 | 1,179 | 1,405 |
| 62 | 2,590 | 1,183 | 1,407 | 2,586 | 1,176 | 1,410 | 2,538 | 1,154 | 1,384 |
| 63 | 2,418 | 1,098 | 1,320 | 2,487 | 1,131 | 1,356 | 2,443 | 1,111 | 1,332 |
| 64 | 2,469 | 1,115 | 1,354 | 2,411 | 1,087 | 1,324 | 2,370 | 1,069 | 1,301 |
| 65 ~ 69 | 10,122 | 4,664 | 5,458 | 10,331 | 4,800 | 5,531 | 10,149 | 4,715 | 5,434 |
| 65 | 2,289 | 1,062 | 1,227 | 2,272 | 1,076 | 1,196 | 2,232 | 1,057 | 1,175 |
| 66 | 2,232 | 997 | 1,235 | 2,120 | 979 | 1,141 | 2,082 | 961 | 1,121 |
| 67 | 1,721 | 843 | 878 | 2,018 | 944 | 1,074 | 1,982 | 927 | 1,055 |
| 68 | 2,021 | 902 | 1,119 | 2,014 | 924 | 1,090 | 1,979 | 908 | 1,071 |
| 69 | 1,859 | 860 | 999 | 1,907 | 877 | 1,030 | 1,874 | 862 | 1,012 |
| 70 ~ 74 | 7,954 | 3,547 | 4,407 | 8,122 | 3,647 | 4,475 | 7,975 | 3,581 | 4,394 |
| 70 | 1,776 | 790 | 986 | 1,897 | 866 | 1,031 | 1,864 | 851 | 1,013 |
| 71 | 1,675 | 766 | 909 | 1,764 | 796 | 968 | 1,731 | 781 | 950 |

| 52 | | | 53 | | | 54 | | |
|--------|-------|--------|--------|-------|--------|--------|-------|--------|
| 総 数 | 男 | 女 | 総 数 | 男 | 女 | 総 数 | 男 | 女 |
| 21,643 | 9,875 | 11,768 | 21,177 | 9,662 | 11,515 | 20,715 | 9,451 | 11,264 |
| 4,724 | 2,166 | 2,538 | 4,622 | 2,139 | 2,483 | 4,521 | 2,092 | 2,429 |
| 4,634 | 2,135 | 2,499 | 4,534 | 2,089 | 2,445 | 4,436 | 2,044 | 2,392 |
| 4,420 | 2,030 | 2,390 | 4,325 | 1,986 | 2,339 | 4,231 | 1,943 | 2,288 |
| 4,084 | 1,846 | 2,238 | 3,996 | 1,806 | 2,190 | 3,908 | 1,766 | 2,142 |
| 3,781 | 1,678 | 2,103 | 3,700 | 1,642 | 2,058 | 3,619 | 1,606 | 2,013 |
| 17,239 | 7,396 | 9,843 | 16,882 | 7,243 | 9,639 | 16,508 | 7,083 | 9,425 |
| 3,768 | 1,617 | 2,151 | 3,688 | 1,583 | 2,105 | 3,607 | 1,548 | 2,059 |
| 3,573 | 1,515 | 2,058 | 3,501 | 1,484 | 2,017 | 3,420 | 1,450 | 1,970 |
| 3,427 | 1,443 | 1,984 | 3,358 | 1,414 | 1,944 | 3,282 | 1,382 | 1,900 |
| 3,247 | 1,395 | 1,852 | 3,179 | 1,366 | 1,813 | 3,111 | 1,337 | 1,774 |
| 3,224 | 1,426 | 1,798 | 3,156 | 1,396 | 1,760 | 3,088 | 1,366 | 1,722 |
| 14,142 | 6,466 | 7,676 | 13,918 | 6,395 | 7,523 | 13,535 | 6,188 | 7,347 |
| 2,866 | 1,303 | 1,563 | 2,803 | 1,274 | 1,529 | 2,743 | 1,247 | 1,496 |
| 2,879 | 1,302 | 1,577 | 2,840 | 1,284 | 1,556 | 2,755 | 1,246 | 1,509 |
| 2,881 | 1,333 | 1,548 | 2,879 | 1,364 | 1,515 | 2,758 | 1,276 | 1,482 |
| 2,813 | 1,288 | 1,525 | 2,752 | 1,260 | 1,492 | 2,693 | 1,233 | 1,460 |
| 2,703 | 1,240 | 1,463 | 2,644 | 1,213 | 1,431 | 2,586 | 1,186 | 1,400 |
| 12,417 | 5,643 | 6,774 | 12,128 | 5,511 | 6,617 | 11,886 | 5,402 | 6,484 |
| 2,689 | 1,224 | 1,465 | 2,632 | 1,198 | 1,434 | 2,574 | 1,172 | 1,402 |
| 2,532 | 1,155 | 1,377 | 2,455 | 1,120 | 1,335 | 2,424 | 1,106 | 1,318 |
| 2,485 | 1,130 | 1,355 | 2,432 | 1,106 | 1,326 | 2,379 | 1,082 | 1,297 |
| 2,392 | 1,088 | 1,304 | 2,340 | 1,064 | 1,276 | 2,289 | 1,041 | 1,248 |
| 2,319 | 1,046 | 1,273 | 2,269 | 1,023 | 1,246 | 2,220 | 1,001 | 1,219 |
| 9,934 | 4,615 | 5,319 | 9,725 | 4,518 | 5,207 | 9,477 | 4,403 | 5,074 |
| 2,185 | 1,035 | 1,150 | 2,139 | 1,013 | 1,126 | 2,092 | 991 | 1,101 |
| 2,038 | 941 | 1,097 | 1,995 | 921 | 1,074 | 1,917 | 885 | 1,032 |
| 1,941 | 908 | 1,033 | 1,899 | 888 | 1,011 | 1,858 | 869 | 989 |
| 1,936 | 888 | 1,048 | 1,896 | 870 | 1,026 | 1,855 | 851 | 1,004 |
| 1,834 | 843 | 991 | 1,796 | 826 | 970 | 1,755 | 807 | 948 |
| 7,819 | 3,518 | 4,301 | 7,652 | 3,443 | 4,209 | 7,472 | 3,355 | 4,117 |
| 1,824 | 833 | 991 | 1,785 | 815 | 970 | 1,746 | 797 | 949 |
| 1,680 | 750 | 930 | 1,644 | 734 | 910 | 1,622 | 732 | 890 |

| 年 令 | 昭 和 49 年 | | | 50 | | | 51 | | |
|----------------|--------------|--------------|--------------|--------------|--------------|--------------|--------------|--------------|--------------|
| | 総 数 | 男 | 女 | 総 数 | 男 | 女 | 総 数 | 男 | 女 |
| 72 | 1,697 | 766 | 931 | 1,647 | 735 | 912 | 1,619 | 723 | 896 |
| 73 | 1,463 | 646 | 817 | 1,469 | 649 | 820 | 1,442 | 637 | 805 |
| 74 | 1,343 | 579 | 764 | 1,345 | 601 | 744 | 1,319 | 589 | 730 |
| 75 ~ 79 | 4,666 | 2,061 | 2,605 | 4,906 | 2,180 | 2,726 | 4,813 | 2,139 | 2,674 |
| 75 | 1,212 | 541 | 671 | 1,334 | 611 | 723 | 1,309 | 600 | 709 |
| 76 | 1,062 | 481 | 581 | 1,152 | 524 | 628 | 1,130 | 514 | 616 |
| 77 | 946 | 432 | 514 | 953 | 420 | 533 | 935 | 412 | 523 |
| 78 | 765 | 344 | 421 | 785 | 338 | 447 | 771 | 332 | 439 |
| 79 | 681 | 263 | 418 | 682 | 287 | 395 | 668 | 281 | 387 |
| 80 ~ 84 | 1,968 | 822 | 1,146 | 2,256 | 927 | 1,329 | 2,215 | 910 | 1,305 |
| 80 | 537 | 227 | 310 | 626 | 260 | 366 | 614 | 255 | 359 |
| 81 | 504 | 213 | 291 | 533 | 222 | 311 | 525 | 219 | 306 |
| 82 | 347 | 131 | 216 | 430 | 175 | 255 | 421 | 171 | 250 |
| 83 | 315 | 143 | 172 | 377 | 158 | 219 | 370 | 155 | 215 |
| 84 | 265 | 108 | 157 | 290 | 112 | 178 | 285 | 110 | 175 |
| 85 ~ 89 | 632 | 215 | 417 | 714 | 240 | 474 | 703 | 237 | 466 |
| 85 | 208 | 71 | 137 | 232 | 82 | 150 | 229 | 81 | 148 |
| 86 | 166 | 56 | 110 | 186 | 65 | 121 | 183 | 64 | 119 |
| 87 | 104 | 39 | 65 | 134 | 45 | 89 | 131 | 44 | 87 |
| 88 | 99 | 32 | 67 | 93 | 27 | 66 | 92 | 27 | 65 |
| 89 | 55 | 17 | 38 | 69 | 21 | 48 | 68 | 21 | 47 |
| 90 ~ 94 | 138 | 32 | 106 | 111 | 27 | 84 | 101 | 24 | 77 |
| 90 | 57 | 13 | 44 | 40 | 8 | 32 | 36 | 7 | 29 |
| 91 | 34 | 11 | 23 | 26 | 5 | 21 | 26 | 5 | 21 |
| 92 | 18 | 2 | 16 | 18 | 5 | 13 | 18 | 5 | 13 |
| 93 | 22 | 4 | 18 | 13 | 5 | 8 | 13 | 5 | 8 |
| 94 | 7 | 2 | 5 | 14 | 4 | 10 | 8 | 2 | 6 |
| 95 ~ 99 | 14 | 2 | 12 | 28 | 4 | 24 | 34 | 8 | 26 |
| 95 | 6 | — | 6 | 12 | 2 | 10 | 11 | 4 | 7 |
| 96 | 3 | 1 | 2 | 5 | — | 5 | 9 | 2 | 7 |
| 97 | 3 | 1 | 2 | 6 | 1 | 5 | 5 | — | 5 |
| 98 | 2 | — | 2 | 3 | 1 | 2 | 6 | 1 | 5 |
| 99 | — | — | — | 2 | — | 2 | 3 | 1 | 2 |
| 100歳以上 | 1 | — | 1 | 3 | — | 3 | 5 | — | 5 |

| 52 | | | 53 | | | 54 | | |
|--------------|--------------|--------------|--------------|--------------|--------------|--------------|--------------|--------------|
| 総 数 | 男 | 女 | 総 数 | 男 | 女 | 総 数 | 男 | 女 |
| 1,571 | 694 | 877 | 1,537 | 679 | 858 | 1,517 | 677 | 840 |
| 1,424 | 636 | 788 | 1,394 | 623 | 771 | 1,351 | 597 | 754 |
| 1,320 | 605 | 715 | 1,292 | 592 | 700 | 1,236 | 552 | 684 |
| 4,645 | 2,025 | 2,620 | 4,544 | 1,981 | 2,563 | 4,515 | 2,007 | 2,508 |
| 1,275 | 580 | 695 | 1,248 | 568 | 680 | 1,227 | 562 | 665 |
| 1,078 | 475 | 603 | 1,055 | 465 | 590 | 1,061 | 483 | 578 |
| 899 | 387 | 512 | 880 | 379 | 501 | 876 | 386 | 490 |
| 743 | 313 | 430 | 727 | 306 | 421 | 722 | 311 | 411 |
| 650 | 270 | 380 | 634 | 263 | 371 | 629 | 265 | 364 |
| 2,152 | 874 | 1,278 | 2,107 | 856 | 1,251 | 2,071 | 850 | 1,221 |
| 604 | 252 | 352 | 590 | 246 | 344 | 574 | 238 | 336 |
| 504 | 205 | 299 | 494 | 201 | 293 | 490 | 204 | 286 |
| 422 | 177 | 245 | 414 | 174 | 240 | 394 | 160 | 234 |
| 344 | 133 | 211 | 337 | 130 | 207 | 346 | 145 | 201 |
| 278 | 107 | 171 | 272 | 105 | 167 | 267 | 103 | 164 |
| 699 | 244 | 455 | 675 | 227 | 448 | 658 | 222 | 436 |
| 223 | 79 | 144 | 220 | 78 | 142 | 214 | 76 | 138 |
| 179 | 63 | 116 | 177 | 62 | 115 | 173 | 61 | 112 |
| 128 | 43 | 85 | 125 | 42 | 83 | 122 | 41 | 81 |
| 103 | 39 | 64 | 88 | 25 | 63 | 86 | 25 | 61 |
| 66 | 20 | 46 | 65 | 20 | 45 | 63 | 19 | 44 |
| 110 | 29 | 81 | 116 | 30 | 86 | 103 | 32 | 71 |
| 38 | 7 | 31 | 37 | 8 | 29 | 36 | 9 | 27 |
| 25 | 5 | 20 | 24 | 5 | 19 | 23 | 5 | 18 |
| 18 | 5 | 13 | 17 | 5 | 12 | 16 | 5 | 11 |
| 12 | 5 | 7 | 12 | 5 | 7 | 11 | 5 | 6 |
| 17 | 7 | 10 | 26 | 7 | 19 | 17 | 8 | 9 |
| 35 | 9 | 26 | 34 | 14 | 20 | 48 | 19 | 29 |
| 7 | 2 | 5 | 18 | 6 | 7 | 19 | 6 | 13 |
| 10 | 4 | 6 | 7 | 2 | 5 | 10 | 5 | 5 |
| 7 | 2 | 5 | 6 | 4 | 2 | 7 | 2 | 5 |
| 5 | — | 5 | 6 | 2 | 4 | 6 | 4 | 2 |
| 6 | 1 | 5 | 2 | — | 2 | 6 | 2 | 4 |
| 8 | 1 | 7 | 4 | 2 | 2 | 6 | 2 | 4 |

12 住民基本台帳による地域別世帯数，人口（男女別，年令3区分別）
および人口密度（東京都）

（昭和49年1月1日）

| 地 域 | 世 帯 数 | 人 口 | | | 人 口 内 訳 | | | 人口密度 (1km ² あたり) |
|-------|-----------|------------|-----------|-----------|-----------------|--------------------|-----------------|-----------------------------------|
| | | 総 数 | 男 | 女 | 幼年人口 (0~14歳) | 生産年令人口 (15~64歳) | 老年人口 (65歳以上) | |
| 総 数 | 4,244,295 | 11,389,985 | 5,757,506 | 5,632,079 | 2,540,074 | 8,171,143 | 678,741 | 5,320 |
| 区 部 | 3,285,463 | 8,526,782 | 4,298,448 | 4,228,334 | 1,793,074 | 6,195,007 | 538,686 | 14,775 |
| 千代田 | 31,245 | 75,035 | 38,605 | 36,430 | 13,133 | 55,415 | 6,487 | 6,513 |
| 中 央 | 43,324 | 103,134 | 51,405 | 51,729 | 18,688 | 74,448 | 9,998 | 10,262 |
| 港 | 93,614 | 216,728 | 106,332 | 110,396 | 38,648 | 161,348 | 16,732 | 11,126 |
| 新 宿 | 162,181 | 357,931 | 177,512 | 180,419 | 62,256 | 271,359 | 24,316 | 19,841 |
| 文 京 | 89,747 | 214,364 | 105,277 | 109,087 | 40,009 | 157,274 | 17,081 | 18,738 |
| 台 東 | 81,909 | 217,273 | 107,923 | 109,350 | 40,544 | 157,628 | 19,101 | 21,727 |
| 墨 田 | 88,831 | 258,341 | 130,714 | 127,627 | 54,888 | 185,247 | 18,206 | 18,693 |
| 江 東 | 127,891 | 349,875 | 183,893 | 165,982 | 80,687 | 252,747 | 16,441 | 12,115 |
| 品 川 | 150,356 | 366,061 | 183,545 | 182,516 | 68,908 | 271,658 | 25,495 | 22,541 |
| 目 黒 | 114,861 | 278,591 | 137,614 | 140,977 | 52,377 | 205,525 | 20,689 | 19,333 |
| 大 田 | 274,012 | 696,792 | 359,957 | 336,835 | 143,741 | 510,955 | 42,096 | 15,481 |
| 世 田 谷 | 303,017 | 770,588 | 385,598 | 384,990 | 157,406 | 561,686 | 51,481 | 13,103 |
| 渋 谷 | 117,763 | 258,664 | 125,037 | 133,627 | 43,515 | 197,579 | 17,570 | 17,119 |
| 中 野 | 150,619 | 355,362 | 176,637 | 178,725 | 68,005 | 263,732 | 23,625 | 22,591 |
| 杉 並 | 222,839 | 533,374 | 265,500 | 267,874 | 102,520 | 392,663 | 38,191 | 15,903 |
| 豊 島 | 134,667 | 309,523 | 153,778 | 155,745 | 55,767 | 232,652 | 21,104 | 23,791 |
| 北 | 158,643 | 417,832 | 209,779 | 208,053 | 85,455 | 305,493 | 26,884 | 20,332 |
| 荒 川 | 73,874 | 217,269 | 110,418 | 106,851 | 44,502 | 157,103 | 15,664 | 21,012 |
| 板 橋 | 179,045 | 479,225 | 243,185 | 236,040 | 106,158 | 347,910 | 25,157 | 15,023 |
| 練 馬 | 192,063 | 541,418 | 277,318 | 264,100 | 129,558 | 385,487 | 26,373 | 11,520 |
| 足 立 | 191,883 | 598,764 | 304,008 | 294,756 | 159,583 | 409,915 | 29,266 | 11,244 |
| 葛 飾 | 145,922 | 444,385 | 225,268 | 219,117 | 106,060 | 313,609 | 24,716 | 13,109 |
| 江 戸 川 | 157,157 | 466,253 | 239,145 | 227,108 | 120,666 | 323,574 | 22,013 | 10,347 |
| 市 部 | 920,610 | 2,732,625 | 1,393,309 | 1,339,316 | 714,201 | 1,888,699 | 129,713 | 3,775 |
| 郡 部 | 26,181 | 95,080 | 48,461 | 46,619 | 24,978 | 63,656 | 6,446 | 218 |
| 島 部 | 12,041 | 35,498 | 17,688 | 17,810 | 7,821 | 23,781 | 3,896 | 88 |

13 地域別世帯と人口推計（東京都）

（昭和49年1月1日）

| 地 域 | 世 帯 数 | 人 口 | | | | 1世帯当り 人 | 割 合 |
|-------|-----------|------------|-----------|-----------|--------------|------------|--------|
| | | 総 数 | 男 | 女 | 女100に つき男 | | |
| 総 数 | 3,742,880 | 11,604,098 | 5,857,248 | 5,746,850 | 101.9 | 3.10 | 1,000% |
| 区 部 | 2,888,322 | 8,713,978 | 4,382,682 | 4,331,296 | 101.2 | 3.02 | 751 |
| 千代田 | 11,799 | 62,830 | 30,305 | 32,525 | 93.2 | 5.33 | 5.4 |
| 中 央 | 20,129 | 91,387 | 43,642 | 47,745 | 91.4 | 4.54 | 7.9 |
| 港 | 67,195 | 216,200 | 104,132 | 112,068 | 92.9 | 3.22 | 18.6 |
| 新 宿 | 133,424 | 367,911 | 182,793 | 185,118 | 98.7 | 2.76 | 31.7 |
| 文 京 | 72,811 | 218,430 | 106,910 | 111,520 | 95.9 | 3.00 | 18.8 |
| 台 東 | 63,588 | 219,222 | 108,817 | 110,405 | 98.6 | 3.45 | 18.9 |
| 墨 田 | 68,697 | 257,084 | 128,921 | 128,163 | 100.6 | 3.74 | 22.2 |
| 江 東 | 101,898 | 355,799 | 186,472 | 169,327 | 110.1 | 3.49 | 30.7 |
| 品 川 | 130,419 | 376,383 | 186,955 | 189,428 | 98.7 | 2.89 | 32.4 |
| 日 黒 | 105,738 | 287,984 | 142,194 | 145,790 | 97.5 | 2.72 | 24.8 |
| 大 田 | 224,564 | 706,103 | 361,659 | 344,444 | 105.0 | 3.14 | 60.8 |
| 世 田 谷 | 286,892 | 804,722 | 407,025 | 397,697 | 102.3 | 2.80 | 69.3 |
| 澁 谷 | 106,662 | 270,945 | 129,471 | 141,474 | 91.5 | 2.54 | 23.3 |
| 中 野 | 144,947 | 375,613 | 188,419 | 187,194 | 100.7 | 2.59 | 32.4 |
| 杉 並 | 208,642 | 561,096 | 281,691 | 279,405 | 100.8 | 2.69 | 48.4 |
| 豊 島 | 132,250 | 335,714 | 168,272 | 167,442 | 100.5 | 2.54 | 28.9 |
| 北 | 150,213 | 426,347 | 212,934 | 213,413 | 99.8 | 2.84 | 36.7 |
| 荒 川 | 66,906 | 225,554 | 114,014 | 111,540 | 102.2 | 3.37 | 19.4 |
| 板 橋 | 160,446 | 487,591 | 247,653 | 239,938 | 103.2 | 3.04 | 42.0 |
| 練 馬 | 180,126 | 550,259 | 281,381 | 268,878 | 104.7 | 3.05 | 47.4 |
| 足 立 | 176,149 | 602,663 | 304,622 | 298,041 | 102.2 | 3.42 | 51.9 |
| 葛 飾 | 137,758 | 450,872 | 227,752 | 223,120 | 102.1 | 3.27 | 38.9 |
| 江 戸 川 | 136,915 | 462,506 | 236,016 | 226,490 | 104.2 | 3.38 | 39.9 |
| 市 部 | 819,315 | 2,761,674 | 1,409,642 | 1,352,032 | 104.3 | 3.37 | 238 |
| 郡 部 | 24,007 | 94,483 | 48,056 | 46,427 | 103.5 | 3.94 | 8 |
| 島 部 | 11,236 | 33,963 | 16,868 | 17,095 | 98.7 | 3.02 | 3 |

注) (1) 本表は昭和45年10月1日現在の国勢調査人口（概数）を基準とし、これに毎月の住民基本台帳の登録増減を加除して推算したものである。

(2) 区部の総数については、昭和45年の国勢調査人口中の境界未定地域人口（世帯 154、人口 763、男 632、女 131）を含む。従って23区の個々の数の合計は「区部」の数と一致しない。

14 昭和45年国勢調査による地域別

(昭和45年)

| 地域 | 常住人口 | | | 昼 | | |
|------|------------|-----------|-----------|------------|-----------|-----------|
| | 総数 | 男 | 女 | 総数 | 男 | 女 |
| 東京都 | 11,408,071 | 5,801,009 | 5,607,062 | 12,668,732 | 6,769,112 | 5,899,620 |
| 区部 | 8,840,942 | 4,488,745 | 4,352,197 | 10,447,198 | 5,731,289 | 4,715,909 |
| 千代田 | 74,185 | 37,410 | 36,775 | 854,975 | 603,908 | 251,067 |
| 中央 | 103,850 | 52,412 | 51,438 | 630,923 | 418,578 | 212,345 |
| 港 | 223,978 | 109,906 | 114,072 | 600,775 | 390,749 | 210,026 |
| 新宿 | 390,657 | 196,495 | 194,162 | 592,167 | 345,407 | 246,760 |
| 文京 | 234,326 | 116,602 | 117,724 | 334,829 | 188,358 | 146,471 |
| 台東 | 240,769 | 121,862 | 118,907 | 366,958 | 214,570 | 152,388 |
| 墨田 | 281,237 | 142,734 | 138,503 | 320,125 | 180,795 | 139,330 |
| 江東 | 355,835 | 188,274 | 167,561 | 390,899 | 229,603 | 161,296 |
| 品川 | 397,302 | 200,116 | 197,186 | 429,203 | 229,862 | 199,341 |
| 目黒 | 295,612 | 147,839 | 147,773 | 276,106 | 139,184 | 136,922 |
| 大田 | 734,990 | 380,012 | 354,978 | 713,751 | 382,431 | 331,320 |
| 世田谷 | 787,338 | 400,772 | 386,566 | 665,451 | 312,799 | 352,652 |
| 渋谷 | 274,491 | 133,469 | 141,022 | 384,234 | 201,258 | 182,976 |
| 中野 | 378,723 | 192,898 | 185,825 | 289,675 | 131,783 | 157,892 |
| 杉並 | 553,016 | 279,196 | 273,820 | 419,823 | 184,415 | 235,408 |
| 豊島 | 354,427 | 178,919 | 175,508 | 379,004 | 194,184 | 184,820 |
| 北 | 431,219 | 216,354 | 214,865 | 385,109 | 186,191 | 198,918 |
| 荒川 | 247,013 | 126,207 | 120,806 | 241,822 | 131,787 | 110,035 |
| 板橋 | 471,777 | 242,413 | 229,364 | 447,739 | 231,814 | 215,925 |
| 練馬 | 527,931 | 270,356 | 257,575 | 418,131 | 190,408 | 227,723 |
| 足立 | 571,791 | 290,676 | 281,115 | 508,381 | 252,309 | 256,072 |
| 葛飾 | 462,954 | 234,168 | 228,786 | 404,282 | 197,583 | 206,699 |
| 江戸川 | 446,758 | 229,023 | 217,735 | 392,171 | 192,778 | 199,393 |
| 所属未定 | 763 | 632 | 131 | ... | ... | ... |

常住人口および昼間人口(23区)

10月1日)

| 間人 | | | | | | 昭和40年国勢調査による | |
|-----------|-----------|-----------|-----------|---------|---------|--------------|------------|
| 0~14歳 | 15~19歳 | 20~24歳 | 25~54歳 | 55~64歳 | 65歳以上 | 常住人口 | 昼間人口 |
| 2,414,141 | 1,109,273 | 1,947,144 | 5,788,321 | 804,659 | 605,194 | 10,869,244 | 11,751,623 |
| 1,776,658 | 932,049 | 1,703,369 | 4,867,082 | 674,744 | 493,296 | 8,893,094 | 10,039,935 |
| 23,546 | 88,119 | 234,223 | 448,150 | 43,460 | 17,477 | 93,067 | 771,818 |
| 16,387 | 40,325 | 146,132 | 366,767 | 41,441 | 19,871 | 128,024 | 615,161 |
| 41,498 | 50,706 | 131,601 | 318,279 | 38,327 | 20,364 | 241,861 | 536,429 |
| 63,257 | 71,431 | 141,697 | 259,043 | 33,171 | 23,568 | 413,910 | 540,694 |
| 45,838 | 49,725 | 71,596 | 131,536 | 20,261 | 15,873 | 253,449 | 330,831 |
| 41,432 | 30,675 | 61,542 | 184,682 | 28,896 | 19,731 | 286,324 | 397,374 |
| 57,475 | 24,142 | 39,278 | 157,370 | 24,415 | 17,445 | 317,630 | 357,996 |
| 76,546 | 27,885 | 48,367 | 196,247 | 26,473 | 15,381 | 359,672 | 401,240 |
| 70,325 | 35,420 | 67,291 | 202,459 | 30,062 | 23,646 | 423,278 | 436,847 |
| 51,364 | 26,433 | 41,917 | 119,813 | 19,629 | 16,950 | 298,774 | 274,400 |
| 144,309 | 50,857 | 94,235 | 340,089 | 48,360 | 35,901 | 755,535 | 700,681 |
| 153,496 | 72,856 | 103,871 | 253,136 | 42,333 | 39,759 | 742,880 | 617,939 |
| 46,256 | 52,223 | 83,229 | 163,986 | 21,890 | 16,650 | 283,730 | 342,135 |
| 66,746 | 25,192 | 32,014 | 125,807 | 20,886 | 19,050 | 376,697 | 286,992 |
| 99,003 | 40,413 | 46,818 | 173,040 | 30,101 | 30,448 | 536,792 | 406,819 |
| 61,557 | 43,669 | 67,040 | 163,818 | 23,758 | 19,162 | 373,126 | 376,273 |
| 85,098 | 36,904 | 42,531 | 171,764 | 26,484 | 22,328 | 452,064 | 400,911 |
| 49,854 | 15,654 | 25,989 | 116,484 | 19,392 | 14,449 | 278,412 | 273,680 |
| 98,654 | 37,719 | 55,760 | 205,629 | 28,447 | 21,530 | 477,007 | 439,150 |
| 121,973 | 29,049 | 42,764 | 180,271 | 23,703 | 20,371 | 434,721 | 339,426 |
| 145,290 | 30,786 | 47,536 | 228,236 | 32,385 | 24,148 | 514,736 | 455,796 |
| 106,691 | 26,279 | 40,158 | 183,624 | 26,727 | 20,803 | 446,040 | 387,091 |
| 109,995 | 25,545 | 37,665 | 176,471 | 24,115 | 18,380 | 405,365 | 350,252 |
| ... | ... | ... | ... | ... | ... | ... | ... |

15 昭和45年国勢調査による地域相互間の流入人口および
流出人口(15歳以上)

(昭和45年10月1日)

| 地 域 | 流 入 人 口 | | | 流 出 人 口 | | |
|----------|---------|---------|--------|---------|--------|--------|
| | 総 数 | 通 勤 者 | 通 学 者 | 総 数 | 通 勤 者 | 通 学 者 |
| 総 数 | 144,869 | 123,000 | 21,869 | 112,251 | 91,843 | 20,408 |
| 都 内 | 88,918 | 74,841 | 14,077 | 99,310 | 81,034 | 18,276 |
| 千代田 | 288 | 194 | 94 | 15,333 | 12,841 | 2,492 |
| 中 央 | 427 | 330 | 97 | 13,746 | 13,535 | 211 |
| 港 | 3,333 | 2,569 | 764 | 21,169 | 17,311 | 3,858 |
| 新 宿 | 2,480 | 2,159 | 321 | 4,769 | 3,341 | 1,428 |
| 文 京 | 1,057 | 887 | 170 | 1,910 | 1,154 | 756 |
| 台 東 | 739 | 565 | 174 | 1,776 | 1,612 | 164 |
| 墨 田 | 824 | 646 | 178 | 586 | 582 | 4 |
| 江 東 | 1,413 | 1,185 | 228 | 1,143 | 1,114 | 29 |
| 目 黒 | 9,764 | 8,295 | 1,469 | 6,340 | 4,944 | 1,396 |
| 大 田 | 23,905 | 18,801 | 5,104 | 15,557 | 13,644 | 1,913 |
| 世 田 谷 | 10,338 | 9,038 | 1,300 | 4,224 | 2,023 | 2,201 |
| 洪 谷 | 3,172 | 2,712 | 460 | 5,867 | 4,032 | 1,835 |
| 中 野 | 2,702 | 2,330 | 372 | 580 | 450 | 130 |
| 杉 並 | 3,875 | 3,313 | 562 | 831 | 530 | 301 |
| 豊 島 | 2,070 | 1,783 | 287 | 1,182 | 775 | 407 |
| 北 | 2,461 | 2,153 | 308 | 564 | 453 | 111 |
| 荒 川 | 931 | 804 | 127 | 311 | 283 | 28 |
| 板 橋 | 1,986 | 1,772 | 214 | 482 | 403 | 79 |
| 練 馬 | 2,554 | 2,287 | 267 | 415 | 263 | 152 |
| 足 立 | 1,830 | 1,649 | 181 | 233 | 229 | 4 |
| 葛 飾 | 1,481 | 1,293 | 188 | 224 | 215 | 9 |
| 江 戸 川 | 1,337 | 1,122 | 215 | 233 | 228 | 5 |
| 市,郡,島部 | 9,951 | 8,954 | 997 | 1,835 | 1,072 | 763 |
| 茨 城 県 | 683 | 581 | 102 | 56 | 53 | 3 |
| 栃 木 県 | 233 | 184 | 49 | 38 | 38 | — |
| 群 馬 県 | 191 | 102 | 89 | 20 | 18 | 2 |
| 埼 玉 県 | 9,064 | 8,249 | 815 | 979 | 669 | 310 |
| 千 葉 県 | 5,229 | 4,687 | 542 | 714 | 443 | 271 |
| 神 奈 川 県 | 40,213 | 34,111 | 6,102 | 11,010 | 9,467 | 1,543 |
| 山 梨 県 | 66 | 47 | 19 | 8 | 7 | 1 |
| 長 野 県 | 20 | 13 | 7 | 13 | 13 | — |
| 静 岡 県 | 189 | 130 | 59 | 69 | 68 | 1 |
| 愛 知 県 | 22 | 19 | 3 | 14 | 14 | — |
| 上記以外の他府県 | 41 | 36 | 5 | 20 | 19 | 1 |